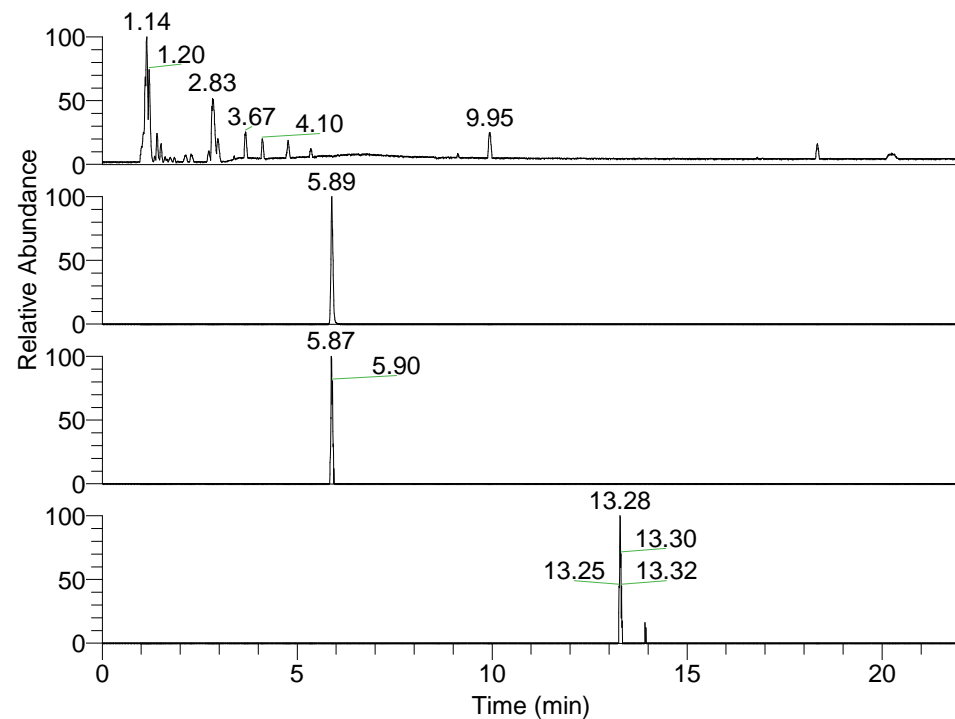


RT: 0.00 - 22.01



NL: 3.85E8
 Base Peak m/z=
 100.00000-1500.00000 F: FTMS + p
 ESI Full ms [100.00-1500.00] MS
 Pbistriata_HDX

NL: 1.24E7
 Base Peak m/z= 365.28363-365.28729
 F: FTMS + p ESI Full ms
 [100.00-1500.00] MS Pbistriata_HDX

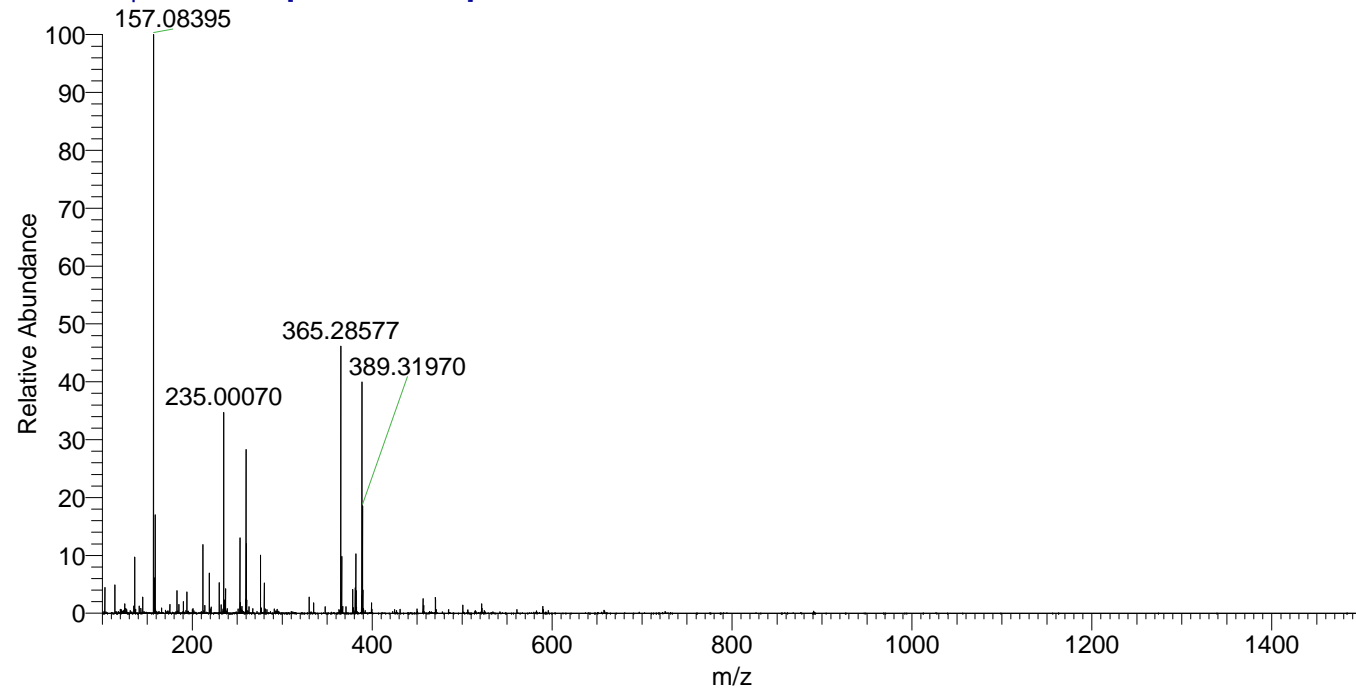
NL: 7.18E4
 Base Peak m/z= 183.64886-183.65070
 F: FTMS + p ESI Full ms
 [100.00-1500.00] MS Pbistriata_HDX

NL: 2.45E4
 Base Peak m/z= 480.28220-480.28700
 F: FTMS + p ESI Full ms
 [100.00-1500.00] MS Pbistriata_HDX

Pbistriata_HDX#962 RT: 5.89
 T: FTMS + p ESI Full ms [100.00-1500.00]
 m/z= 365.00000-366.00000

m/z	Intensity	Relative	Delta (ppm)	Composition
365.28577	12351124.0	100.00	-0.69	C ₂₀ H ₃₁ ² H ₃ O ₂ N ₄
			0.86	C ₂₀ H ₂₉ ² H ₄ O ₂ N ₄
			-2.24	C ₂₀ H ₃₃ ² H ₂ O ₂ N ₄
			2.41	C ₂₀ H ₂₇ ² H ₅ O ₂ N ₄
			-3.79	C ₂₀ H ₃₅ ² H ₁ O ₂ N ₄
			3.95	C ₂₀ H ₂₅ ² H ₆ O ₂ N ₄
			-5.34	C ₂₀ H ₃₇ O ₂ N ₄
			5.50	C ₂₀ H ₂₃ ² H ₇ O ₂ N ₄
			7.05	C ₂₀ H ₂₁ ² H ₈ O ₂ N ₄
			8.60	C ₂₀ H ₁₉ ² H ₉ O ₂ N ₄

Pbistriata_HDX #961 RT: 5.89 AV: 1 NL: 2.56E7
 T: FTMS + p ESI Full ms [100.00-1500.00]



Pbistriata_HDX #962 RT: 5.89 AV: 1 NL: 1.20E7
 T: FTMS + p ESI Full ms [100.00-1500.00]

