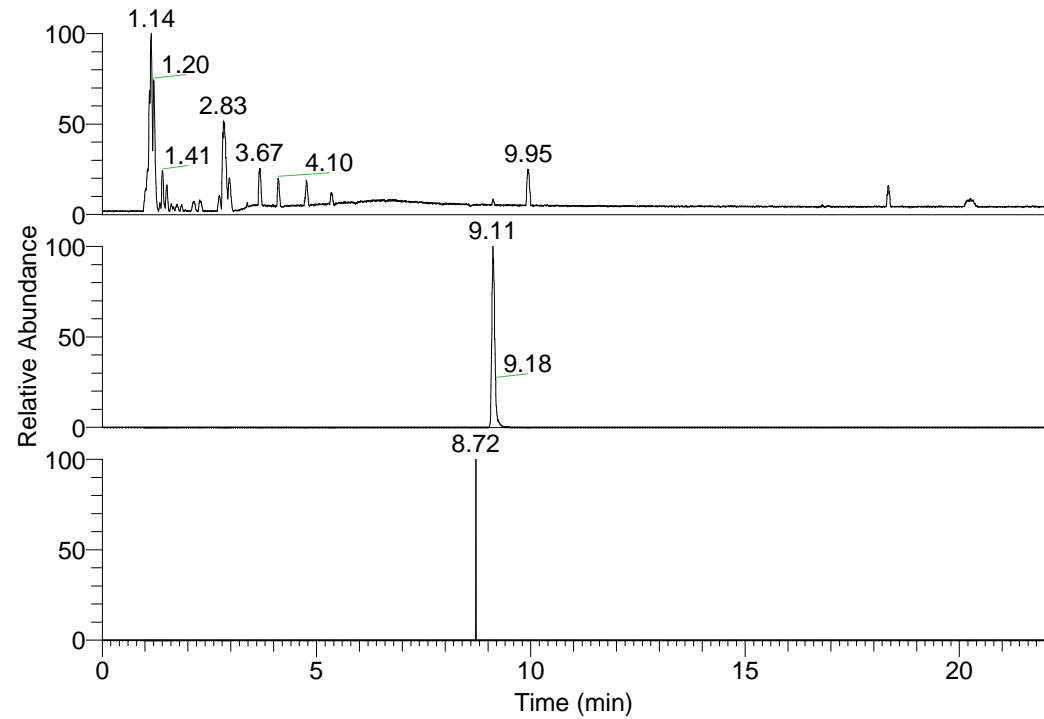


RT: 0.00 - 22.01



NL: 3.85E8
 Base Peak m/z=
 100.00000-1500.00000 F:
 FTMS + p ESI Full ms
 [100.00-1500.00] MS
 Pbistriata_HDX

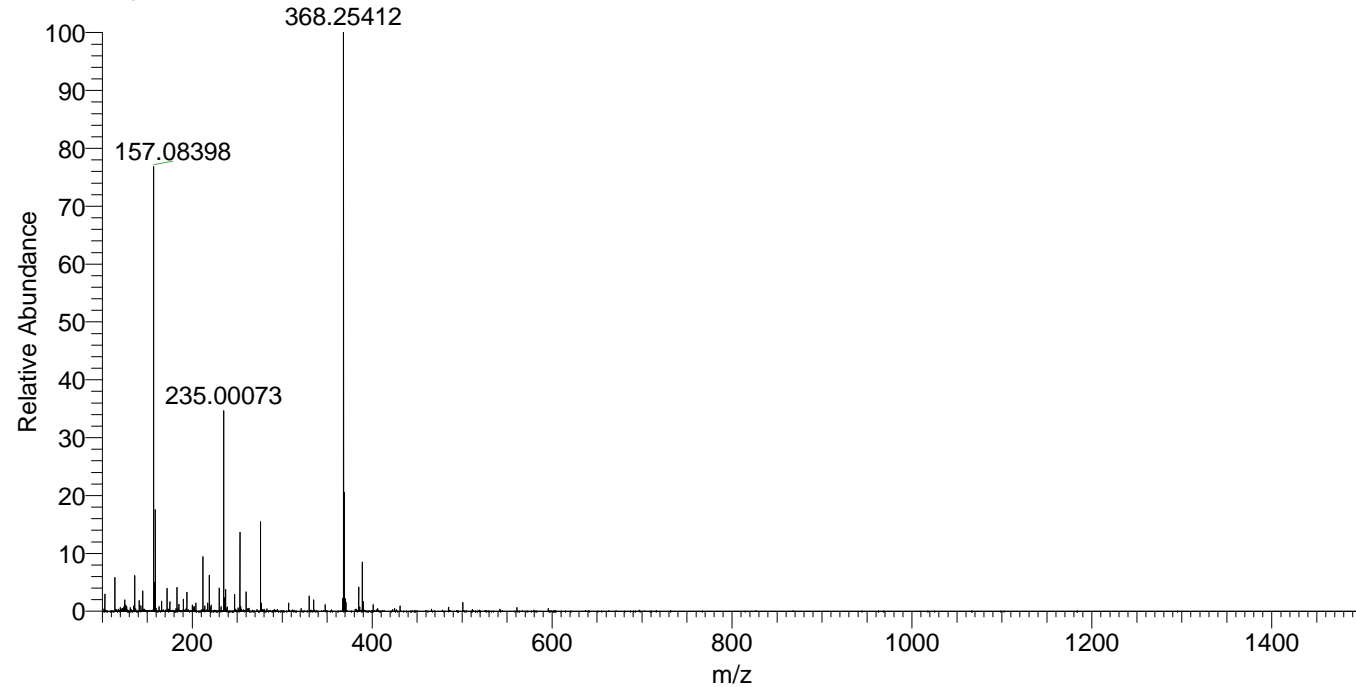
NL: 3.31E7
 Base Peak m/z=
 368.25194-368.25562 F: FTMS
 + p ESI Full ms
 [100.00-1500.00] MS
 Pbistriata_HDX

NL: 4.34E3
 Base Peak m/z=
 185.13301-185.13487 F: FTMS
 + p ESI Full ms
 [100.00-1500.00] MS
 Pbistriata_HDX

Pbistriata_HDX#1489 RT: 9.11
 T: FTMS + p ESI Full ms [100.00-1500.00]
 m/z= 368.00000-369.00000

m/z	Intensity	Relative	Delta (ppm)	Composition
368.25412	27880612.0	100.00	-1.79	C ₁₈ H ₂₀ ² H ₇ O ₃ N ₅
			2.42	C ₁₈ H ₁₈ ² H ₈ O ₃ N ₅
			-5.99	C ₁₈ H ₂₂ ² H ₆ O ₃ N ₅
			6.62	C ₁₈ H ₁₆ ² H ₉ O ₃ N ₅

Pbistriata_HDX #1489 RT: 9.11 AV: 1 NL: 2.62E7
 T: FTMS + p ESI Full ms [100.00-1500.00]



Pbistriata_HDX #1489 RT: 9.11 AV: 1 NL: 2.62E7
 T: FTMS + p ESI Full ms [100.00-1500.00]

