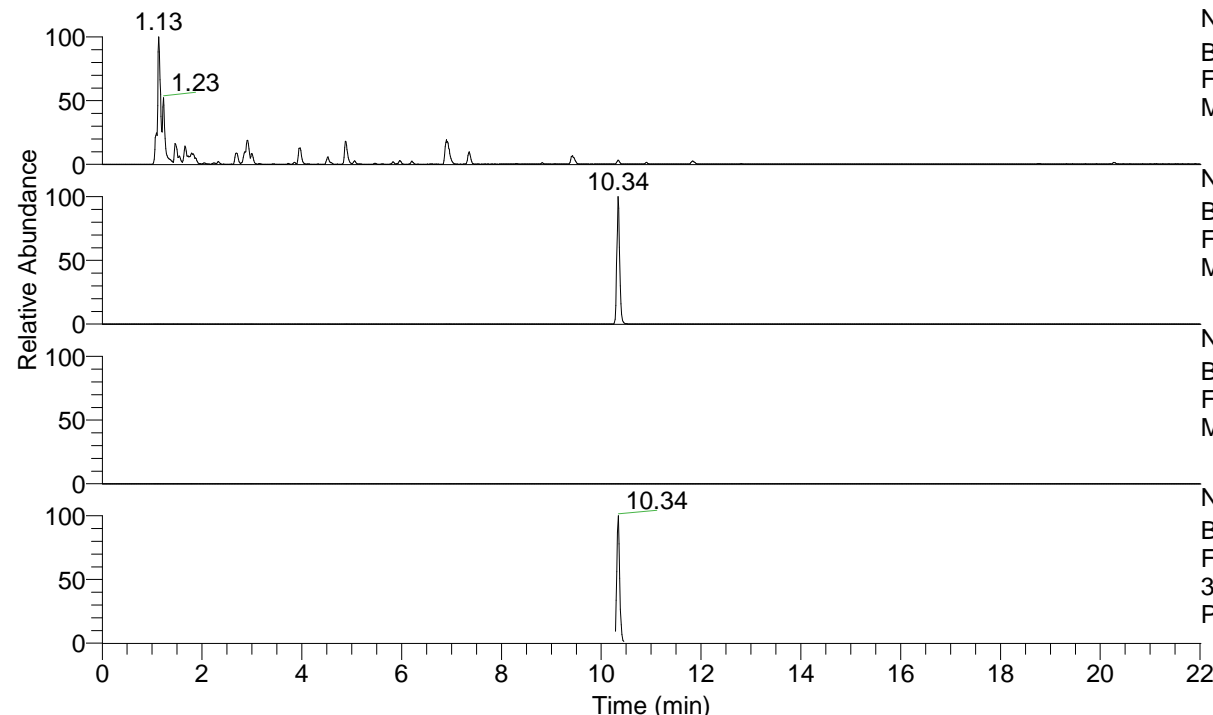


RT: 0.00 - 22.01



NL: 8.91E8
 Base Peak m/z= 100.00000-1500.00000 F:
 FTMS + p ESI Full ms [100.0000-1500.0000]
 MS Pbistriata

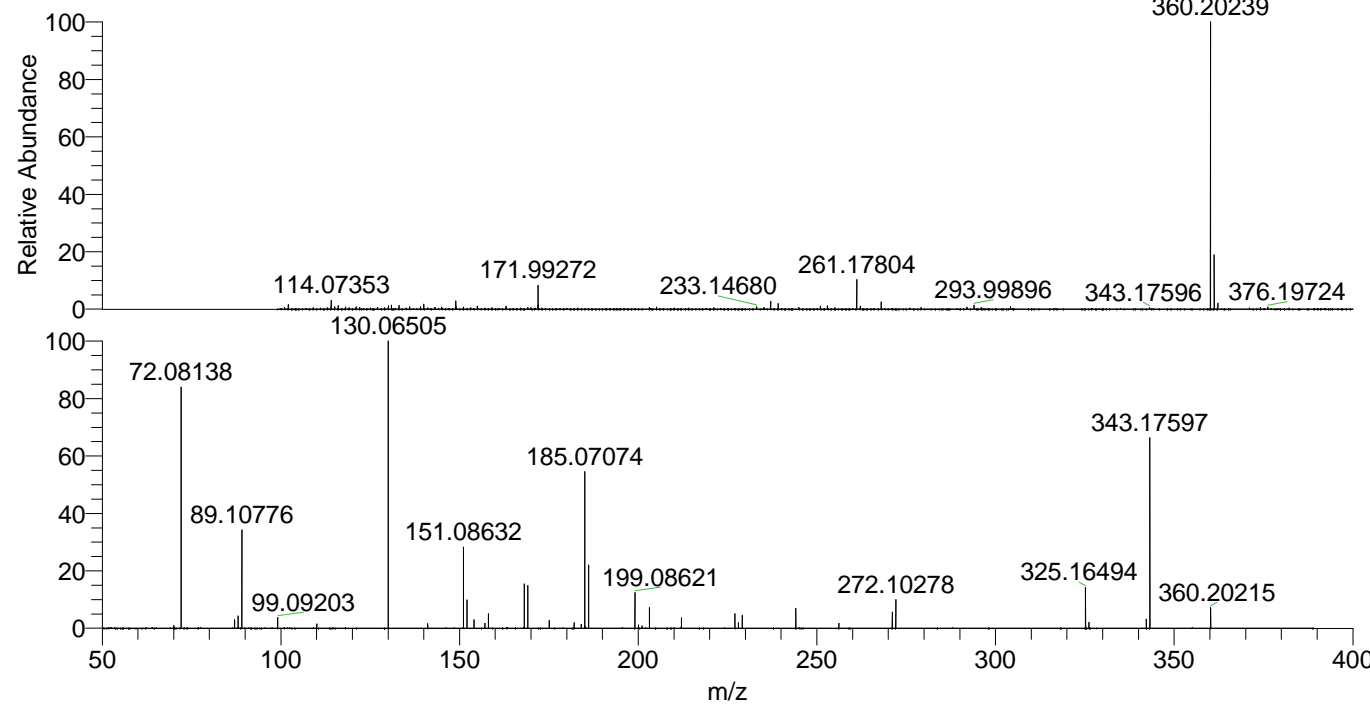
NL: 3.13E7
 Base Peak m/z= 360.19996-360.20716 F:
 FTMS + p ESI Full ms [100.0000-1500.0000]
 MS Pbistriata

NL: 0
 Base Peak m/z= 180.60388-180.60750 F:
 FTMS + p ESI Full ms [100.0000-1500.0000]
 MS Pbistriata

NL: 2.81E6
 Base Peak m/z= 50.00000-1500.00000 F:
 FTMS + p ESI d Full ms2
 360.2024@hcd35.00 [50.0000-385.0000] MS
 Pbistriata

Pbistriata#4294-4353 RT: 10.29-10.43
 F: FTMS + p ESI d Full ms2 360.2000 ...
 m/z= 50.00000-1000.00000

m/z	Intensity	Relative
70.06570	10049.7	0.91
72.08138	921014.4	83.48
87.05583	32501.8	2.95
88.03980	47018.2	4.26
89.10776	381270.3	34.56
89.11350	8945.0	0.81
99.09203	40184.8	3.64
110.02383	16214.0	1.47
130.06505	1103216.6	100.00
141.10217	17619.6	1.60
151.08632	314964.6	28.55
152.07034	107973.5	9.79
154.06098	32943.7	2.99
157.07594	19020.2	1.72
158.05994	55279.5	5.01
168.11289	167649.4	15.20
169.09703	160263.3	14.53
175.08639	30072.4	2.73
182.06034	21621.5	1.96
184.07559	15078.8	1.37
185.07074	600890.6	54.47
185.14018	6434.6	0.58
186.12342	245854.9	22.29
199.08621	135310.5	12.27
200.07098	13332.5	1.21
201.10167	9659.3	0.88
203.14998	78075.1	7.08
212.10303	39481.8	3.58
227.08137	56786.2	5.15
228.06569	20744.4	1.88
229.13329	49530.0	4.49
244.10772	74916.5	6.79
256.14388	19562.5	1.77
271.11829	60908.9	5.52
272.10278	108493.7	9.83
325.16494	156140.4	14.15
326.14990	22018.7	2.00
342.19197	34413.7	3.12
343.17597	726200.3	65.83
360.20215	78127.2	7.08



NL: 3.11E7
 Pbistriata#4315 RT: 10.34
 AV: 1 T: FTMS + p ESI Full
 ms [100.0000-1500.0000]

NL: 1.08E6
 Pbistriata#4288-4361 RT:
 10.29-10.43 AV: 11 F: FTMS
 + p ESI d Full ms2
 360.2024@hcd35.00
 [50.0000-385.0000]