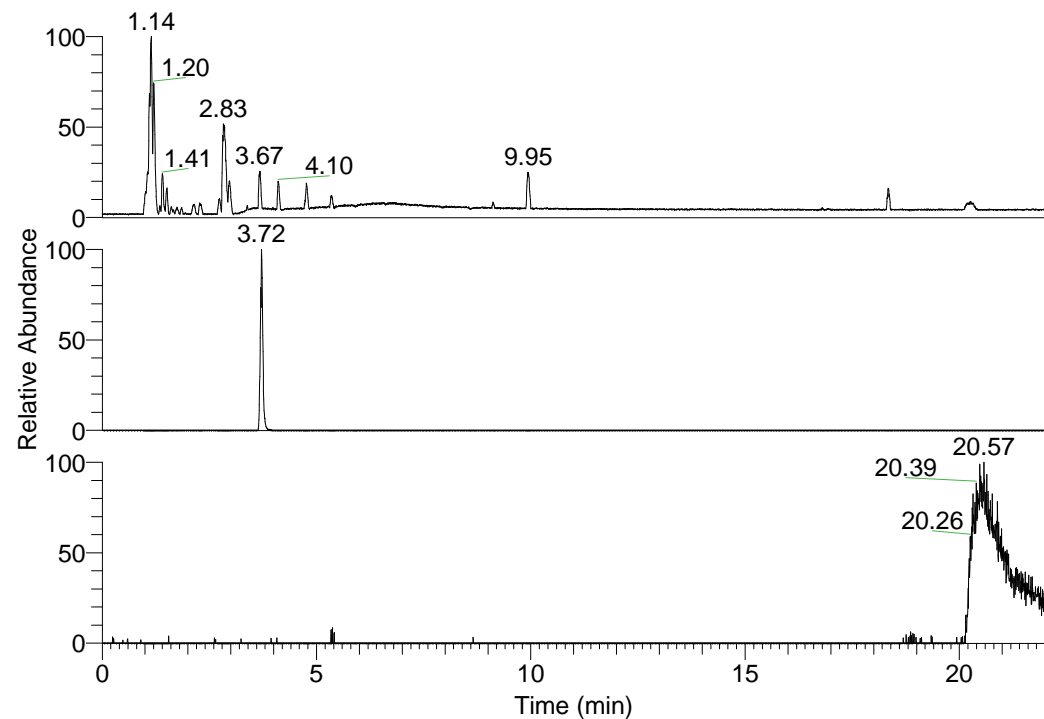


RT: 0.00 - 22.01



NL: 3.85E8
 Base Peak m/z=
 100.00000-1500.00000 F:
 FTMS + p ESI Full ms
 [100.00-1500.00] MS
 Pbistriata_HDX

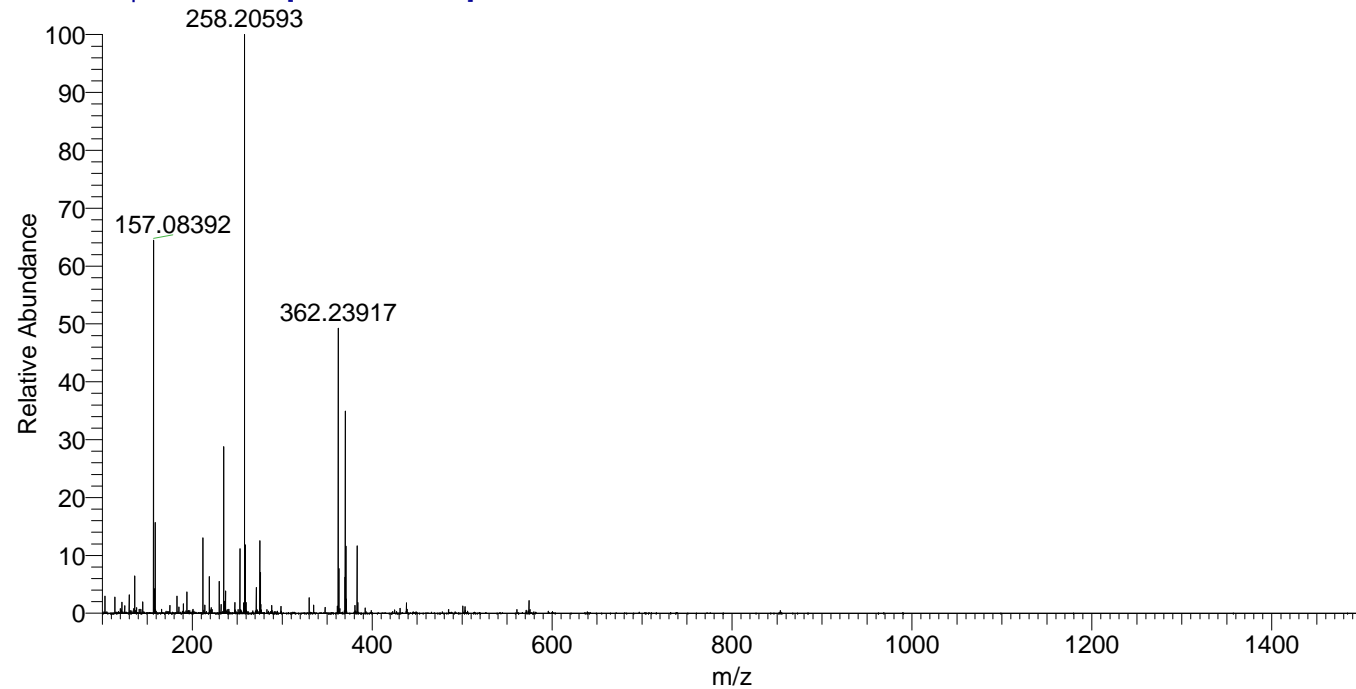
NL: 1.50E7
 Base Peak m/z=
 362.23718-362.24080 F: FTMS
 + p ESI Full ms
 [100.00-1500.00] MS
 Pbistriata_HDX

NL: 1.18E5
 Base Peak m/z=
 182.12563-182.12745 F: FTMS
 + p ESI Full ms
 [100.00-1500.00] MS
 Pbistriata_HDX

Pbistriata_HDX#604 RT: 3.72
 T: FTMS + p ESI Full ms [100.00-1500.00]
 m/z= 362.00000-363.00000

m/z	Intensity	Relative	Delta (ppm)	Composition
362.23917	14122841.0	100.00	2.01	C ₁₆ H ₁₆ ² H ₉ O ₅ N ₄
			-2.26	C ₁₆ H ₁₈ ² H ₈ O ₅ N ₄
			6.29	C ₁₆ H ₁₄ ² H ₁₀ O ₅ N ₄
			-6.54	C ₁₆ H ₂₀ ² H ₇ O ₅ N ₄

Pbistriata_HDX #604 RT: 3.72 AV: 1 NL: 2.85E7
 T: FTMS + p ESI Full ms [100.00-1500.00]



Pbistriata_HDX #604 RT: 3.72 AV: 1 NL: 1.40E7
 T: FTMS + p ESI Full ms [100.00-1500.00]

