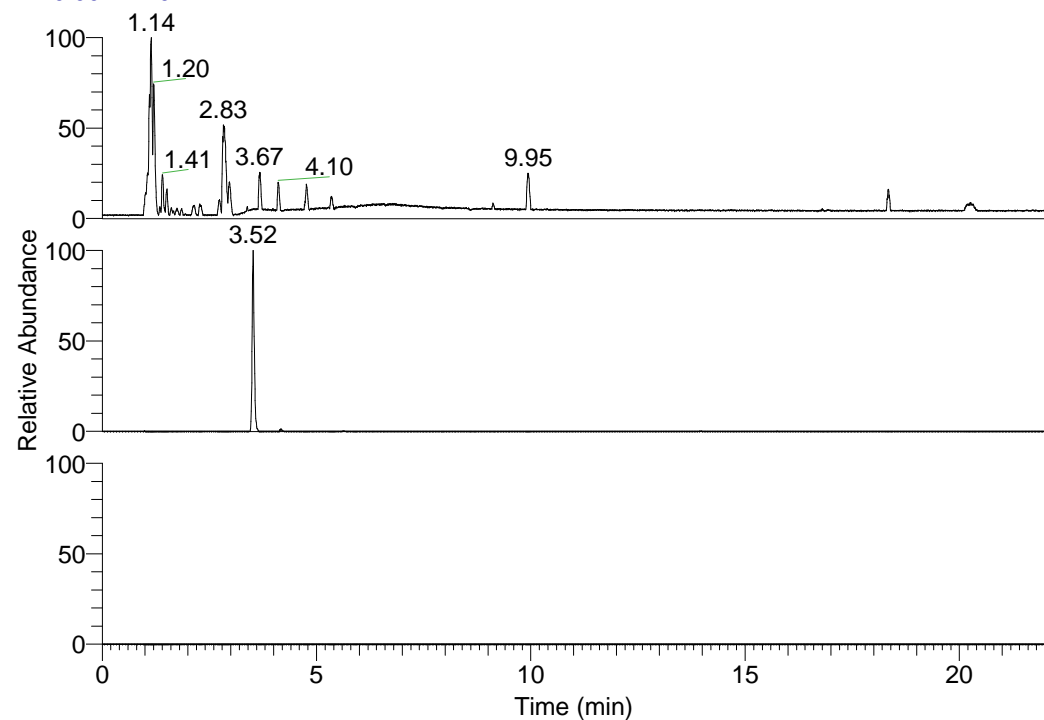


RT: 0.00 - 22.01



NL: 3.85E8
 Base Peak m/z=
 100.00000-1500.00000 F:
 FTMS + p ESI Full ms
 [100.00-1500.00] MS
 Pbistriata_HDX

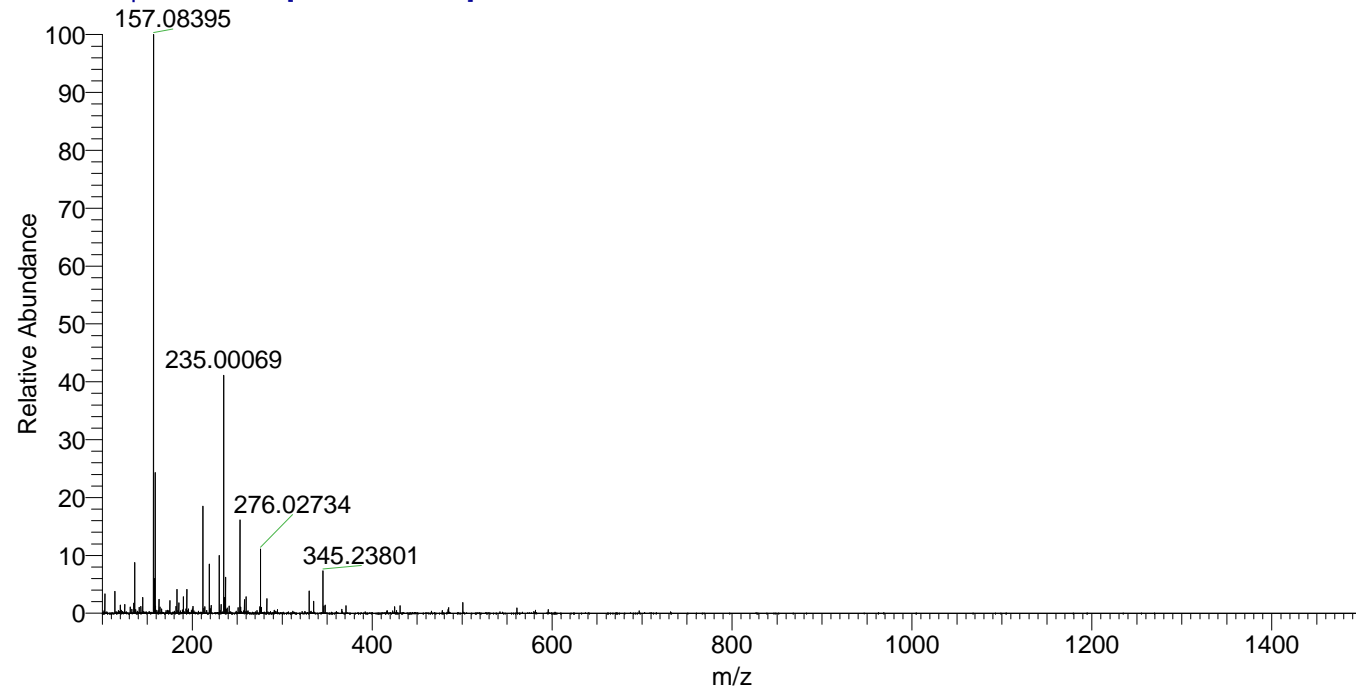
NL: 1.54E6
 Base Peak m/z=
 345.23607-345.23953 F: FTMS
 + p ESI Full ms
 [100.00-1500.00] MS
 Pbistriata_HDX

NL: 0
 Base Peak m/z=
 173.62508-173.62682 F: FTMS
 + p ESI Full ms
 [100.00-1500.00] MS
 Pbistriata_HDX

Pbistriata_HDX#570 RT: 3.52
 T: FTMS + p ESI Full ms [100.00-1500.00]
 m/z= 345.00000-346.00000

m/z	Intensity	Relative	Delta (ppm)	Composition
345.23801	1544440.5	100.00	2.20	C ₁₆ H ₁₇ ² H ₈ O ₄ N ₄
			-2.28	C ₁₆ H ₁₉ ² H ₇ O ₄ N ₄
			6.69	C ₁₆ H ₁₅ ² H ₉ O ₄ N ₄
			-6.77	C ₁₆ H ₂₁ ² H ₆ O ₄ N ₄

Pbistriata_HDX #570 RT: 3.52 AV: 1 NL: 2.03E7
 T: FTMS + p ESI Full ms [100.00-1500.00]



Pbistriata_HDX #570 RT: 3.52 AV: 1 NL: 1.48E6
 T: FTMS + p ESI Full ms [100.00-1500.00]

