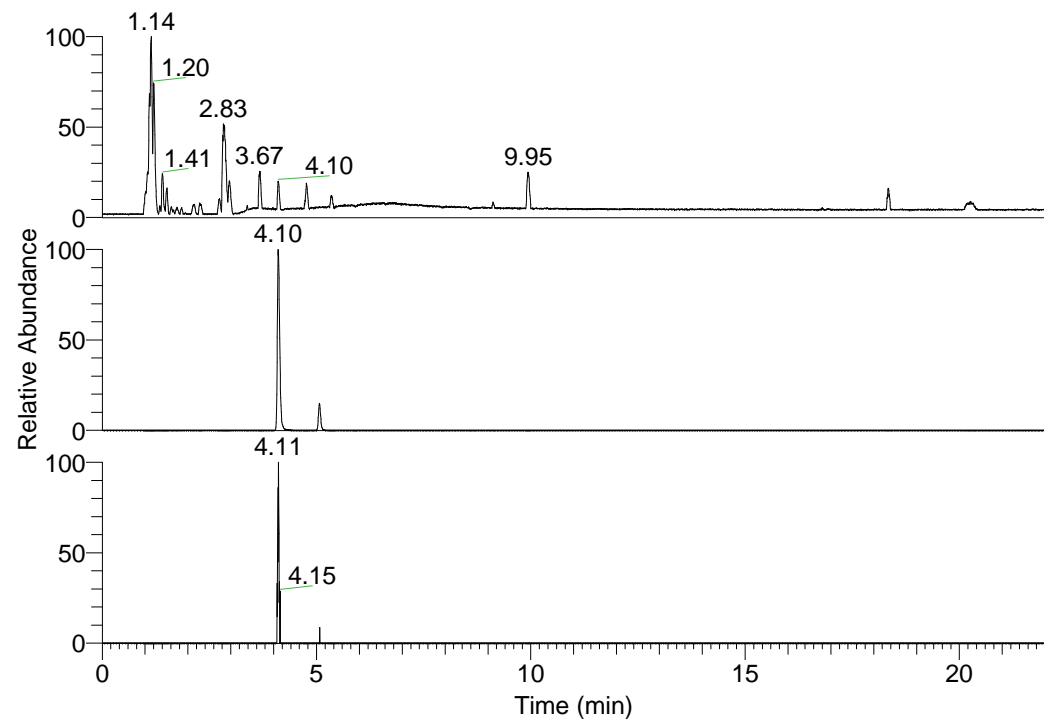


RT: 0.00 - 22.01



NL: 3.85E8
 Base Peak m/z=
 100.00000-1500.00000 F:
 FTMS + p ESI Full ms
 [100.00-1500.00] MS
 Pbistriata_HDX

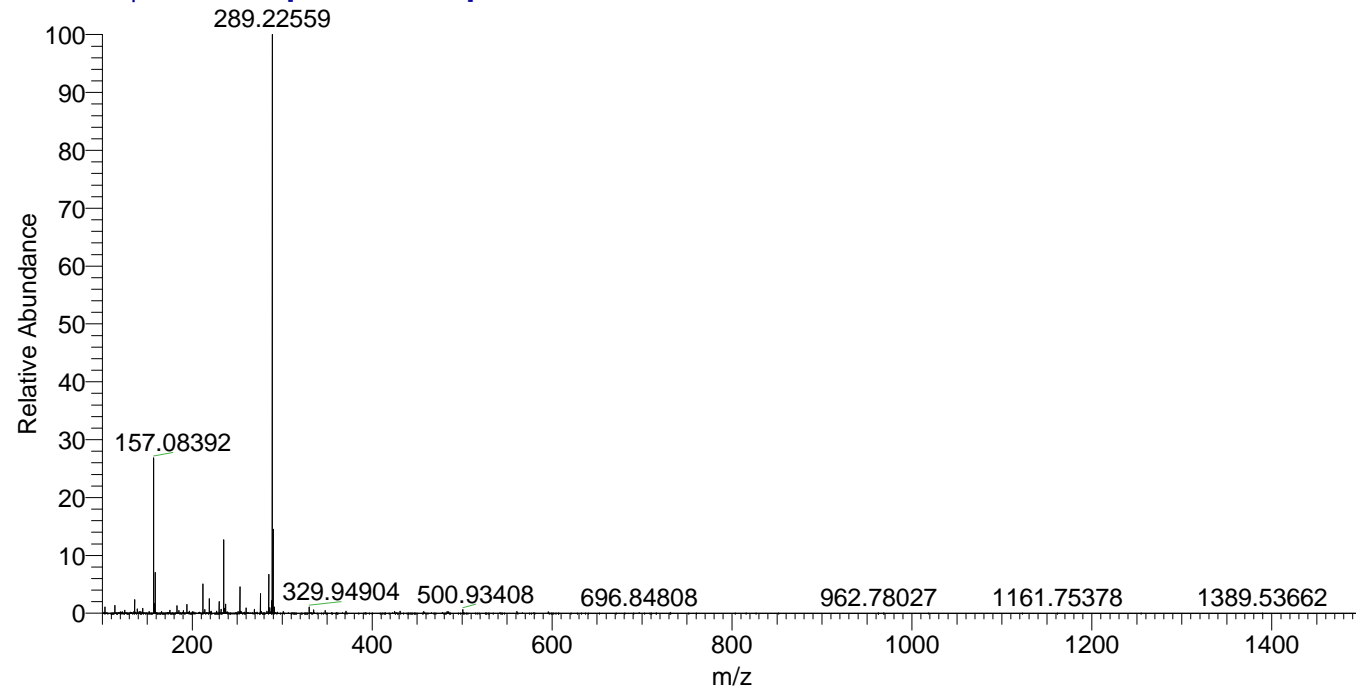
NL: 7.70E7
 Base Peak m/z=
 289.22426-289.22716 F: FTMS
 + p ESI Full ms
 [100.00-1500.00] MS
 Pbistriata_HDX

NL: 4.63E4
 Base Peak m/z=
 145.61917-145.62063 F: FTMS
 + p ESI Full ms
 [100.00-1500.00] MS
 Pbistriata_HDX

Pbistriata_HDX#666 RT: 4.10
 T: FTMS + p ESI Full ms [100.00-1500.00]
 m/z= 289.00000-290.00000

m/z	Intensity	Relative	Delta (ppm)	Composition
289.22559	77043616.0	100.00	1.49	C ₁₄ H ₁₇ ² H ₇ O ₃ N ₃
			-3.86	C ₁₄ H ₁₉ ² H ₆ O ₃ N ₃
			6.84	C ₁₄ H ₁₅ ² H ₈ O ₃ N ₃
			-9.22	C ₁₄ H ₂₁ ² H ₅ O ₃ N ₃

Pbistriata_HDX #666 RT: 4.10 AV: 1 NL: 7.61E7
 T: FTMS + p ESI Full ms [100.00-1500.00]



Pbistriata_HDX #666 RT: 4.10 AV: 1 NL: 7.61E7
 T: FTMS + p ESI Full ms [100.00-1500.00]

