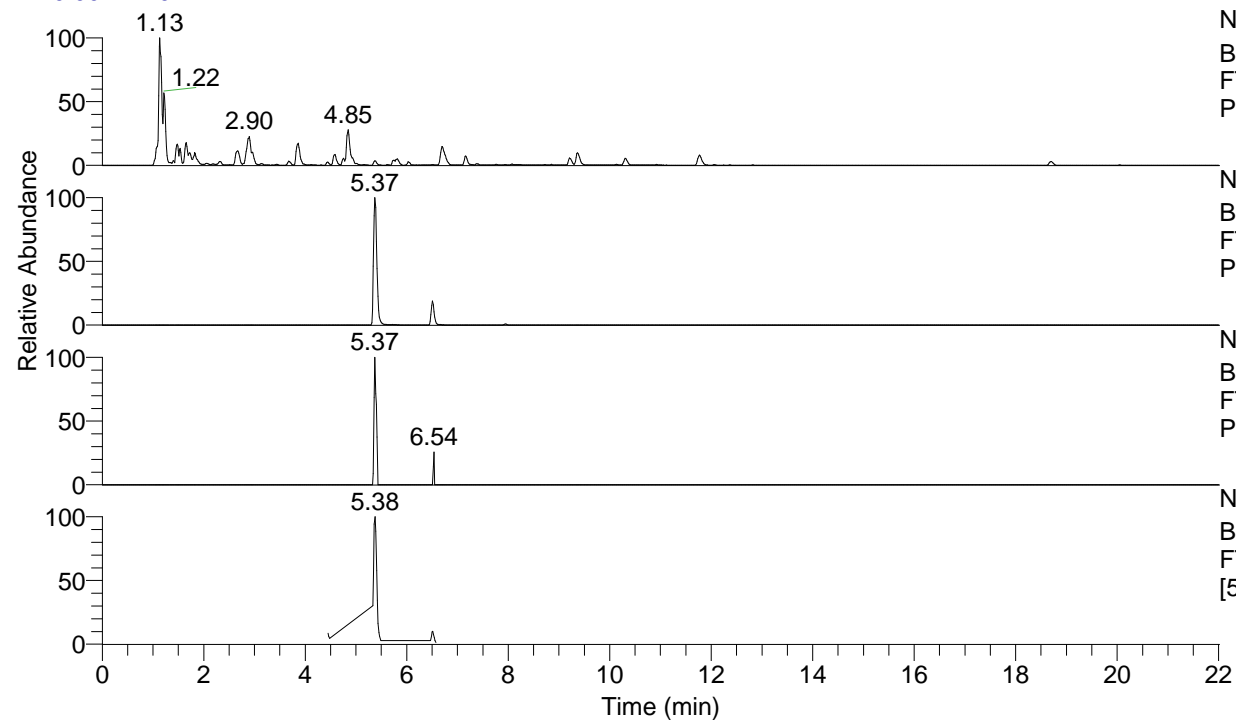


RT: 0.00 - 22.01



NL: 4.34E8

Base Peak m/z= 100.00000-1500.00000 F:
FTMS + p ESI Full ms [100.00-1500.00] MS
Pbishriata20

NL: 1.58E7

Base Peak m/z= 282.18036-282.18318 F:
FTMS + p ESI Full ms [100.00-1500.00] MS
Pbishriata20

NL: 1.92E4

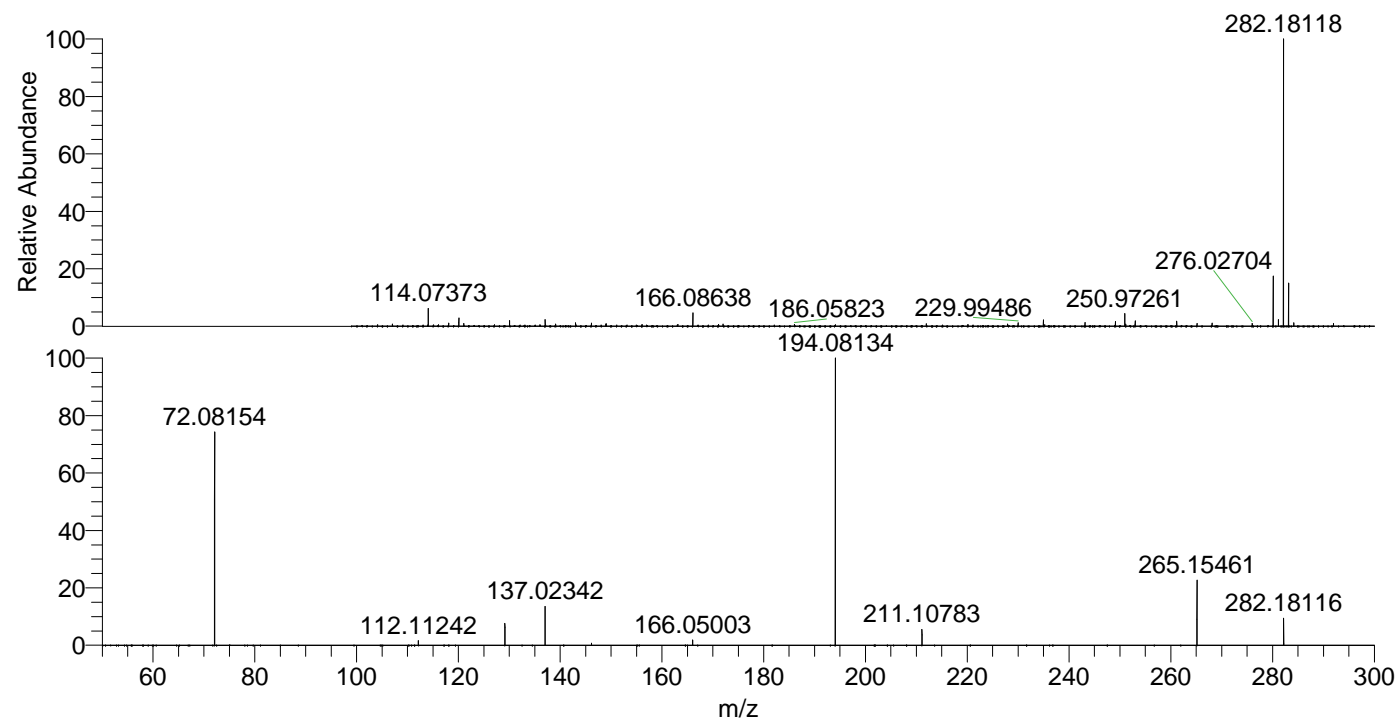
Base Peak m/z= 141.59409-141.59551 F:
FTMS + p ESI Full ms [100.00-1500.00] MS
Pbishriata20

NL: 4.23E6

Base Peak m/z= 50.00000-1500.00000 F:
FTMS + p ESI d Full ms2 282.18@hcd35.00
[50.00-305.00] MS Pbishriata20

Pbishriata20#2230-2264 RT: 5.33-5.42
F: FTMS + p ESI d Full ms2 282.18@h ...
m/z= 50.00000-1000.00000

m/z	Intensity	Relative
72.08154	1890003.5	73.30
112.11242	40504.0	1.57
129.13875	189717.5	7.36
137.02342	341528.7	13.25
146.16515	19290.8	0.75
166.05003	46148.6	1.79
194.08134	2578455.8	100.00
211.10783	142105.0	5.51
265.15461	570060.9	22.11
282.18116	234593.7	9.10



NL: 1.55E7

Pbishriata20#2245 RT:
5.37 AV: 1 T: FTMS + p
ESI Full lock ms
[100.00-1500.00]

NL: 2.49E6

Pbishriata20#2228-2267
RT: 5.33-5.42 AV: 7 F:
FTMS + p ESI d Full ms2
282.18@hcd35.00
[50.00-305.00]