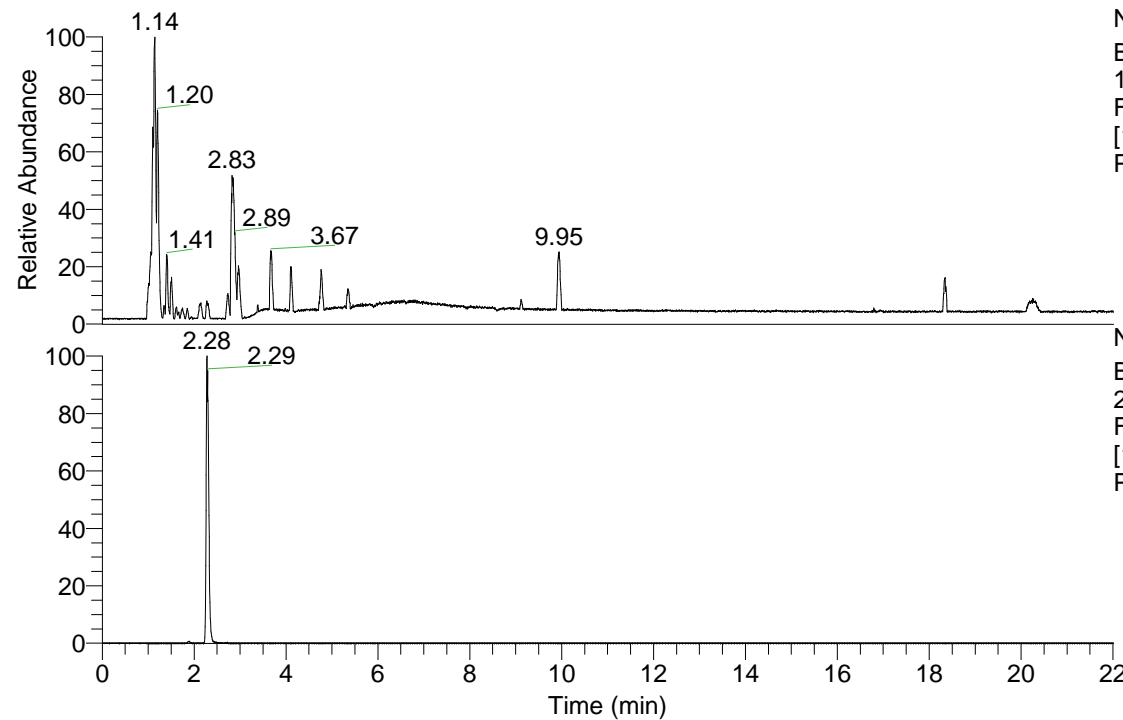


RT: 0.00 - 22.01



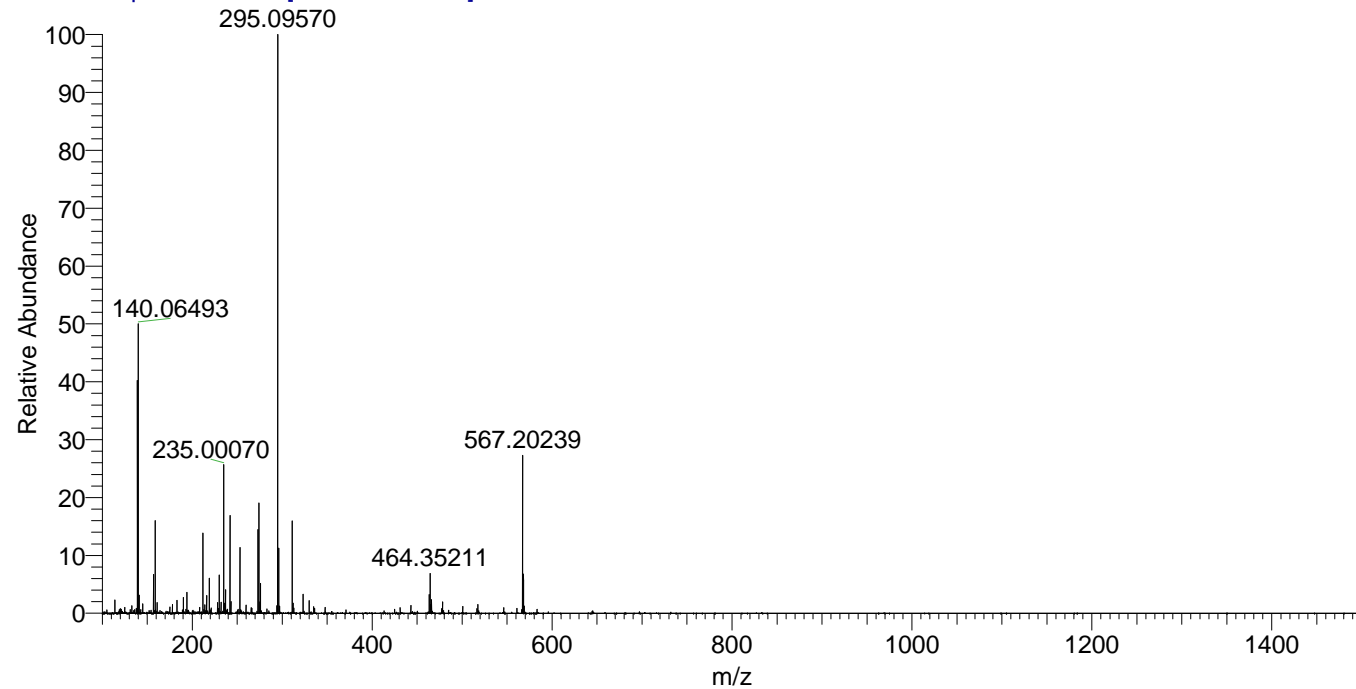
NL: 3.85E8
Base Peak m/z=
100.00000-1500.00000
F: FTMS + p ESI Full ms
[100.00-1500.00] MS
Pbistriata_HDX

NL: 5.51E6
Base Peak m/z=
274.11861-274.12135 F:
FTMS + p ESI Full ms
[100.00-1500.00] MS
Pbistriata_HDX

Pbistriata_HDX#368 RT: 2.28
T: FTMS + p ESI Full ms [100.00-1500.00]
m/z= 274.00000-275.00000

m/z	Intensity	Relative	Delta (ppm)	Composition
274.11987	5505369.0	100.00	1.62	C ₁₀ H ₈ ² H ₅ O ₅ N ₄
			-4.03	C ₁₀ H ₁₀ ² H ₄ O ₅ N ₄
			7.27	C ₁₀ H ₆ ² H ₆ O ₅ N ₄
			-9.68	C ₁₀ H ₁₂ ² H ₃ O ₅ N ₄

Pbistriata_HDX #368 RT: 2.28 AV: 1 NL: 2.83E7
T: FTMS + p ESI Full ms [100.00-1500.00]



Pbistriata_HDX #368 RT: 2.28 AV: 1 NL: 5.41E6
T: FTMS + p ESI Full ms [100.00-1500.00]

