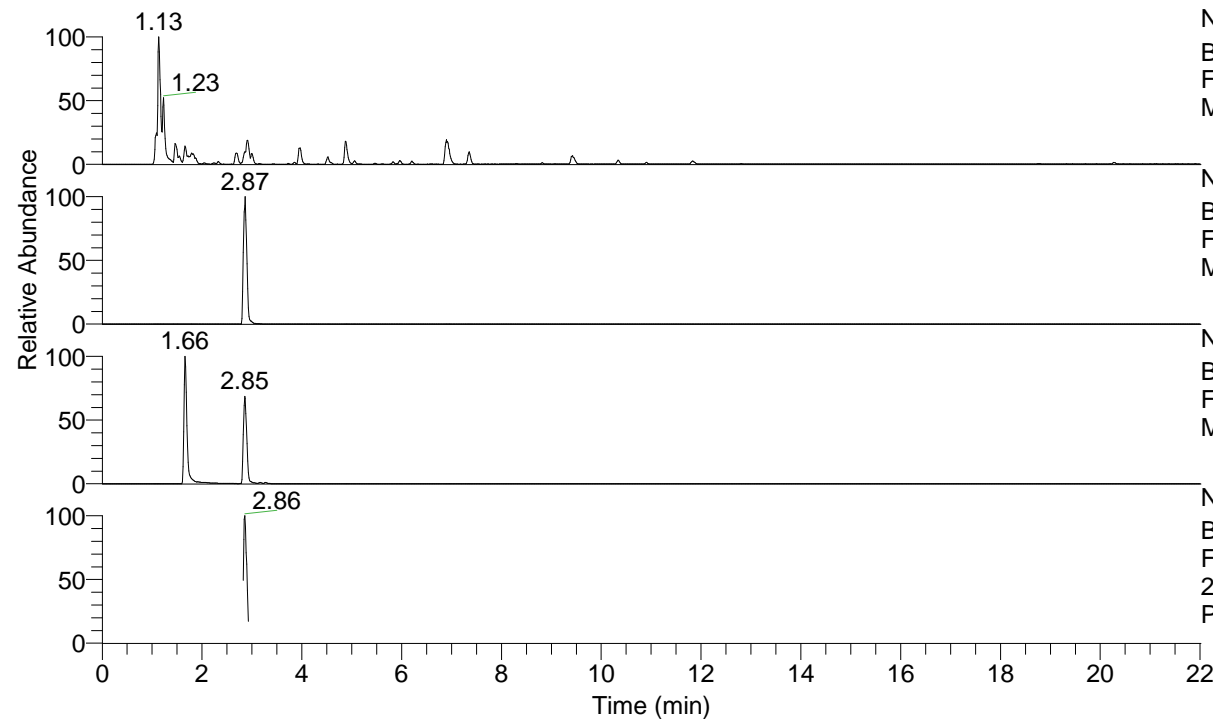


RT: 0.00 - 22.01



NL: 8.91E8
 Base Peak m/z= 100.00000-1500.00000 F:
 FTMS + p ESI Full ms [100.0000-1500.0000]
 MS Pbistriata

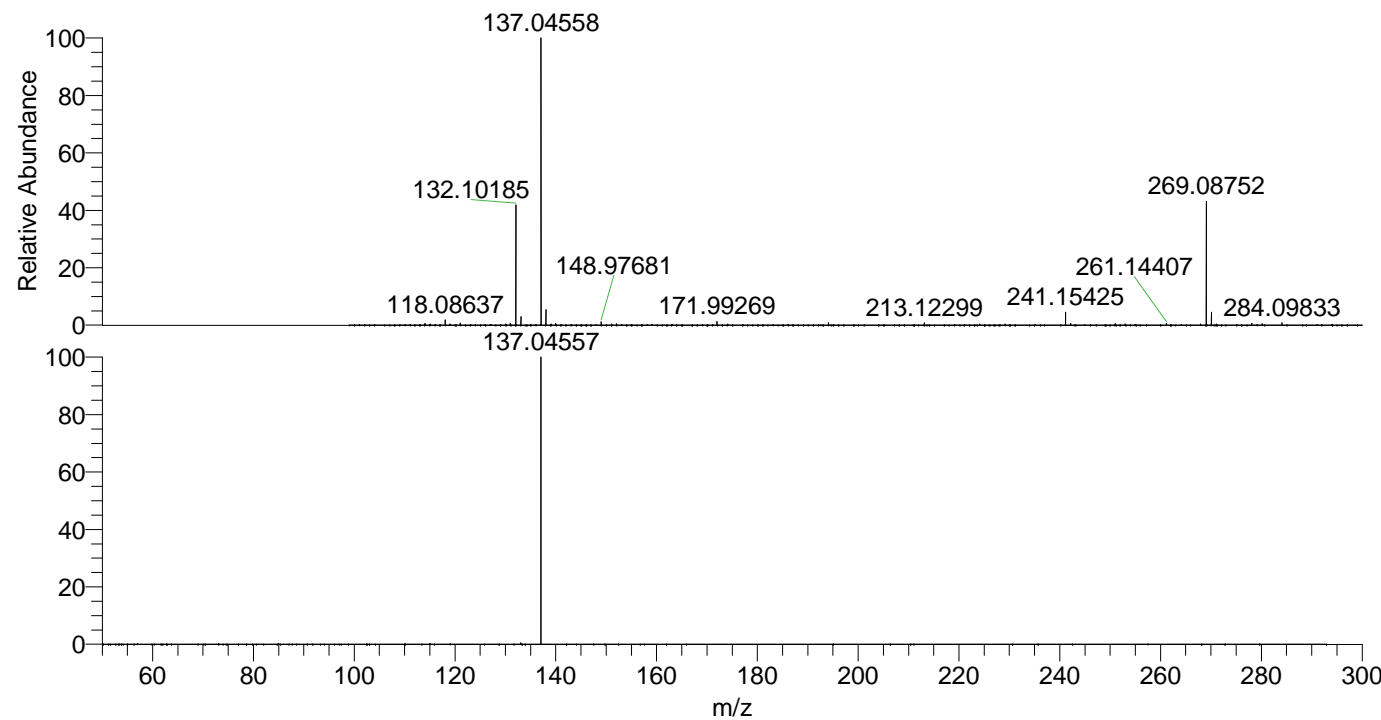
NL: 3.67E7
 Base Peak m/z= 269.08590-269.09128 F:
 FTMS + p ESI Full ms [100.0000-1500.0000]
 MS Pbistriata

NL: 1.28E8
 Base Peak m/z= 137.04497-137.04771 F:
 FTMS + p ESI Full ms [100.0000-1500.0000]
 MS Pbistriata

NL: 1.88E7
 Base Peak m/z= 50.00000-1500.00000 F:
 FTMS + p ESI d Full ms2
 269.0875@hcd35.00 [50.0000-290.0000] MS
 Pbistriata

Pbistriata#1217-1266 RT: 2.82-2.93 AV: 9
 F: FTMS + p ESI d Full ms2 269.0900@ ...
 m/z= 50.00000-1000.00000

m/z	Intensity	Relative
137.04557	12041361.0	100.00



NL: 8.49E7
 Pbistriata#1237 RT: 2.87
 AV: 1 T: FTMS + p ESI Full
 ms [100.0000-1500.0000]

NL: 1.20E7
 Pbistriata#1213-1267 RT:
 2.82-2.93 AV: 9 F: FTMS +
 p ESI d Full ms2
 269.0875@hcd35.00
 [50.0000-290.0000]