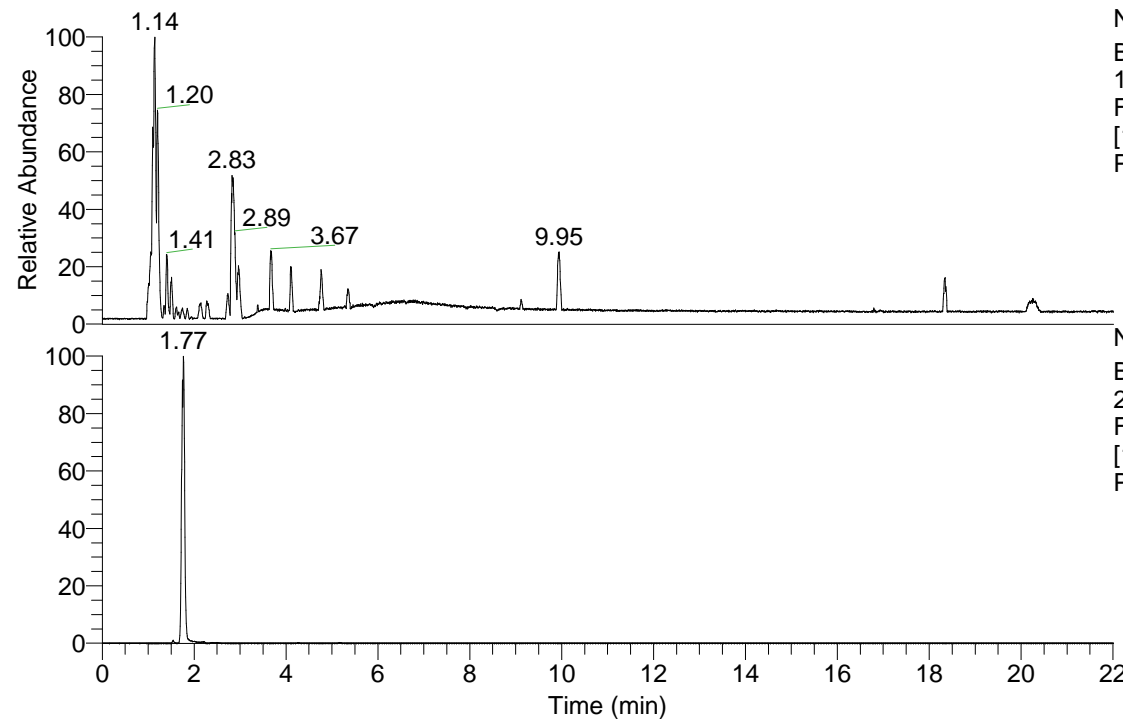


RT: 0.00 - 22.01



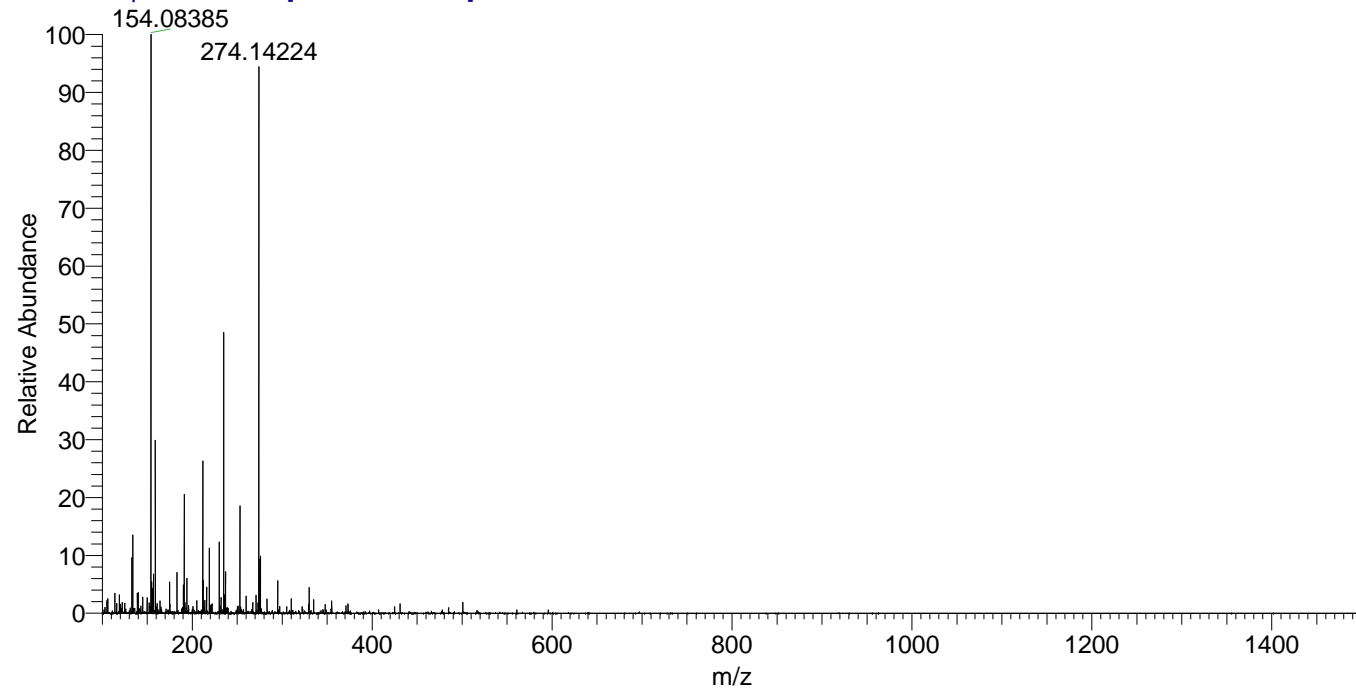
NL: 3.85E8
Base Peak m/z=
100.00000-1500.00000
F: FTMS + p ESI Full ms
[100.00-1500.00] MS
Pbistriata_HDX

Pbistriata_HDX#285 RT: 1.77
T: FTMS + p ESI Full ms [100.00-1500.00]
m/z= 274.00000-275.00000

m/z	Intensity	Relative	Delta (ppm)	Composition
274.14224	14888367.0	100.00	2.01	C ₁₀ H ₈ ² H ₆ O ₄ N ₅
			-3.64	C ₁₀ H ₁₀ ² H ₅ O ₄ N ₅
			7.66	C ₁₀ H ₆ ² H ₇ O ₄ N ₅
			-9.28	C ₁₀ H ₁₂ ² H ₄ O ₄ N ₅

NL: 1.49E7
Base Peak m/z=
274.14087-274.14361 F:
FTMS + p ESI Full ms
[100.00-1500.00] MS
Pbistriata_HDX

Pbistriata_HDX #285 RT: 1.77 AV: 1 NL: 1.57E7
T: FTMS + p ESI Full ms [100.00-1500.00]



Pbistriata_HDX #285 RT: 1.77 AV: 1 NL: 1.49E7
T: FTMS + p ESI Full ms [100.00-1500.00]

