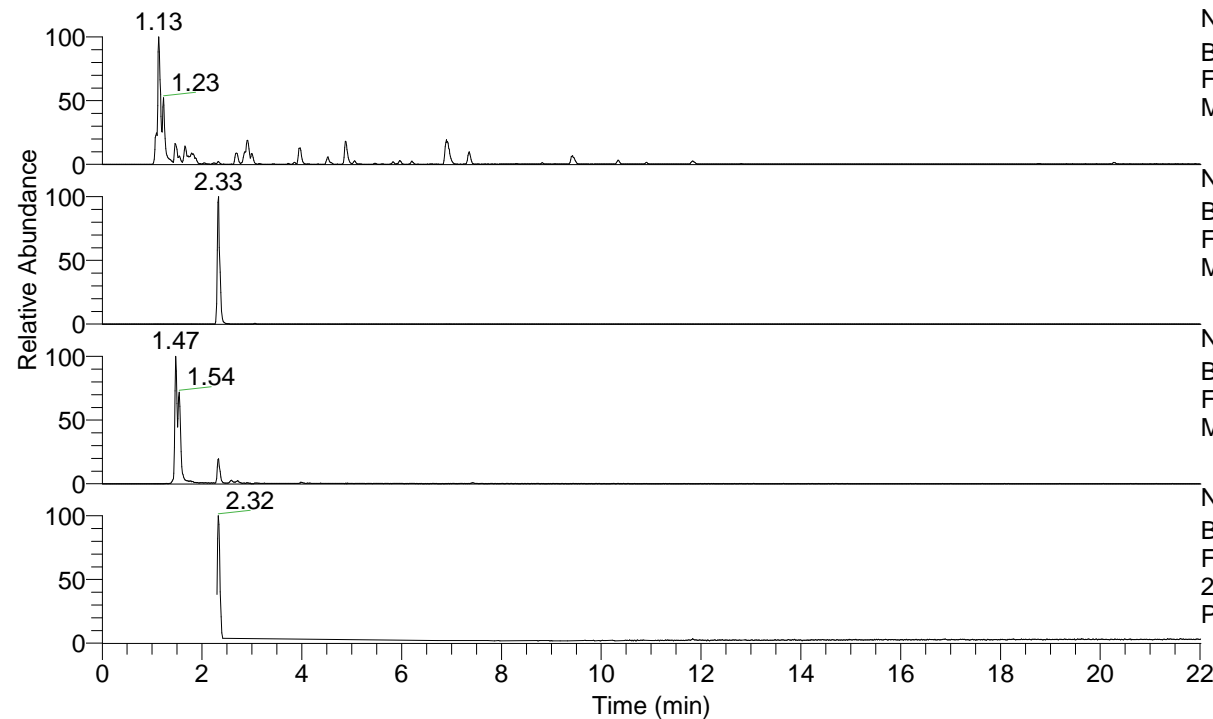


RT: 0.00 - 22.01



NL: 8.91E8
 Base Peak m/z= 100.00000-1500.00000 F:
 FTMS + p ESI Full ms [100.0000-1500.0000]
 MS Pbistriata

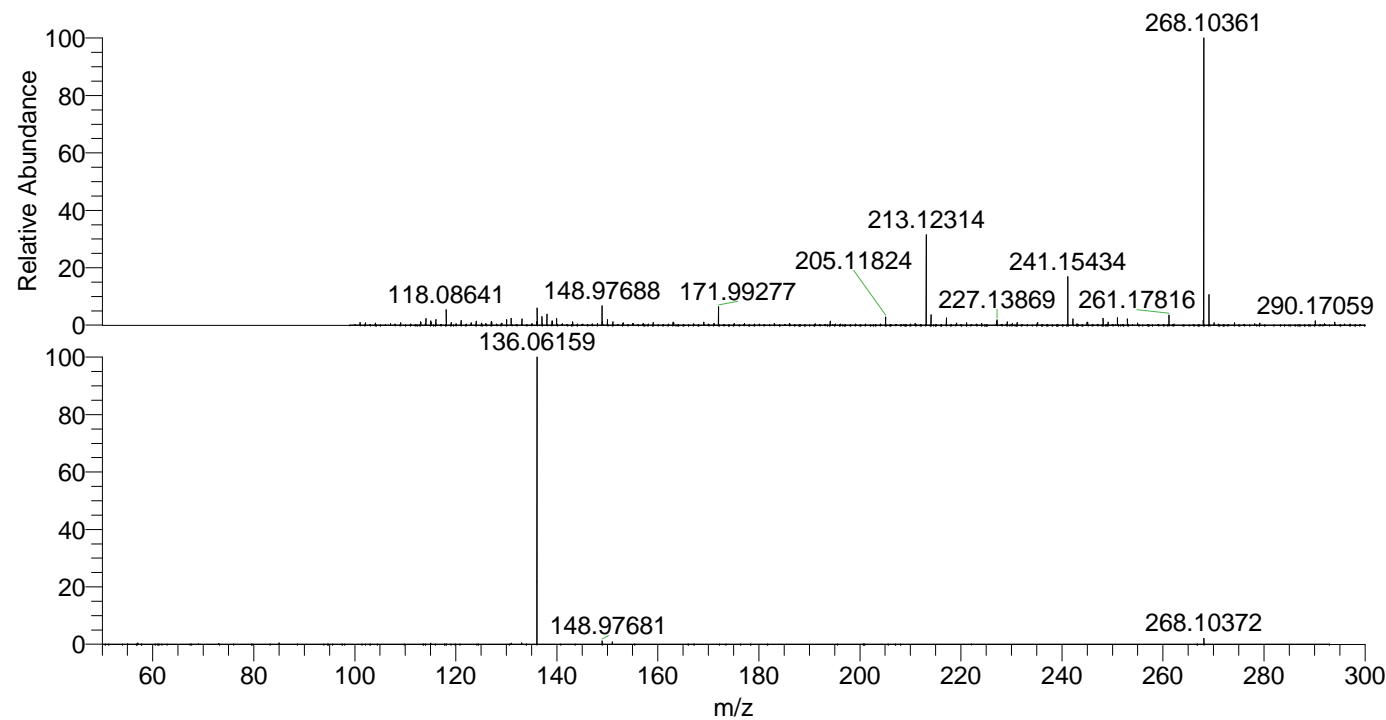
NL: 2.07E7
 Base Peak m/z= 268.10189-268.10725 F:
 FTMS + p ESI Full ms [100.0000-1500.0000]
 MS Pbistriata

NL: 6.32E6
 Base Peak m/z= 136.06096-136.06368 F:
 FTMS + p ESI Full ms [100.0000-1500.0000]
 MS Pbistriata

NL: 8.93E6
 Base Peak m/z= 50.00000-1500.00000 F:
 FTMS + p ESI d Full ms2
 267.9746@hcd35.00 [50.0000-290.0000] MS
 Pbistriata

Pbistriata#1000-1034 RT: 2.30-2.38 AV: 7
 F: FTMS + p ESI d Full ms2 267.9700 ...
 m/z= 50.00000-1000.00000

m/z	Intensity	Relative
133.04928	29219.4	0.54
136.06159	5379675.0	100.00
148.97681	63428.7	1.18
150.97227	49053.1	0.91
268.10372	112524.1	2.09



NL: 2.02E7
 Pbistriata#1015 RT: 2.33
 AV: 1 T: FTMS + p ESI Full
 ms [100.0000-1500.0000]

NL: 5.37E6
 Pbistriata#997-1039 RT:
 2.30-2.38 AV: 7 F: FTMS +
 p ESI d Full ms2
 267.9746@hcd35.00
 [50.0000-290.0000]