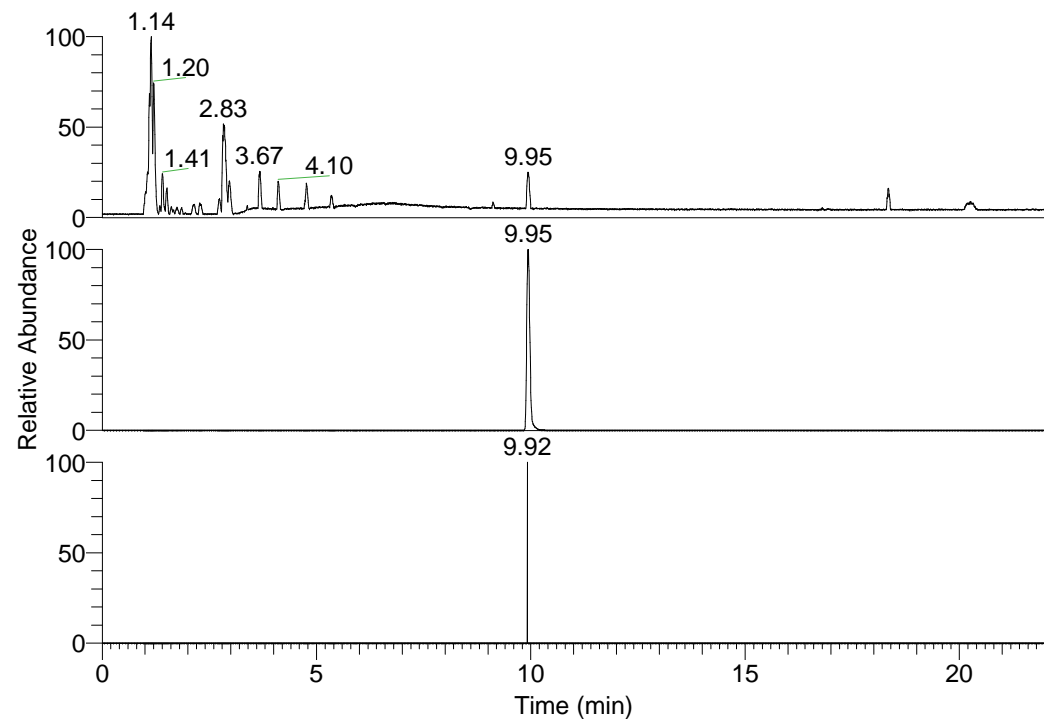


RT: 0.00 - 22.01



NL: 3.85E8
Base Peak m/z=
100.00000-1500.00000 F:
FTMS + p ESI Full ms
[100.00-1500.00] MS
Pbistriata_HDX

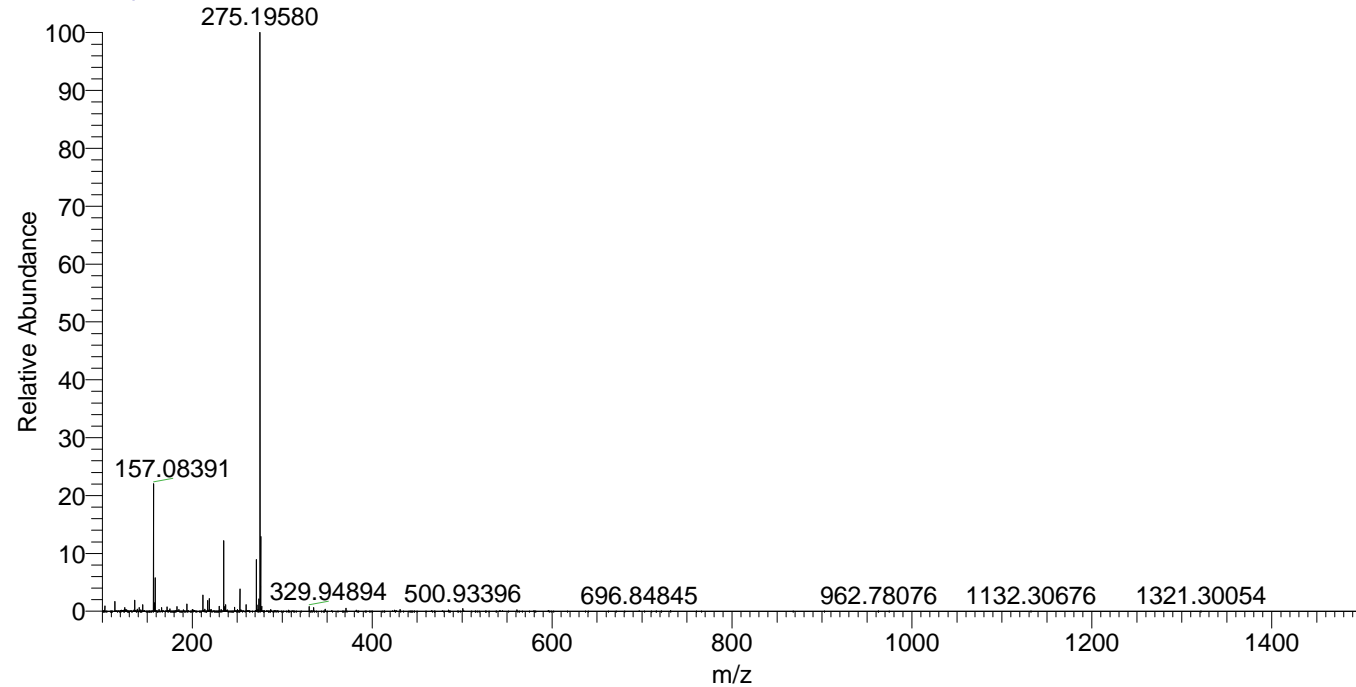
NL: 9.65E7
Base Peak m/z=
275.19455-275.19731 F: FTMS
+ p ESI Full ms
[100.00-1500.00] MS
Pbistriata_HDX

NL: 5.25E3
Base Peak m/z=
138.60433-138.60571 F: FTMS
+ p ESI Full ms
[100.00-1500.00] MS
Pbistriata_HDX

Pbistriata_HDX#1627 RT: 9.95
T: FTMS + p ESI Full ms [100.00-1500.00]
m/z= 275.00000-276.00000

m/z	Intensity	Relative	Delta (ppm)	Composition
275.19580	87513992.0	100.00	1.53	C ₁₂ H ₁₁ ² H ₈ O ₃ N ₄
			-4.10	C ₁₂ H ₁₃ ² H ₇ O ₃ N ₄
			7.15	C ₁₂ H ₉ ² H ₉ O ₃ N ₄
			-9.73	C ₁₂ H ₁₅ ² H ₆ O ₃ N ₄

Pbistriata_HDX #1627 RT: 9.95 AV: 1 NL: 8.66E7
T: FTMS + p ESI Full ms [100.00-1500.00]



Pbistriata_HDX #1627 RT: 9.95 AV: 1 NL: 8.66E7
T: FTMS + p ESI Full ms [100.00-1500.00]

