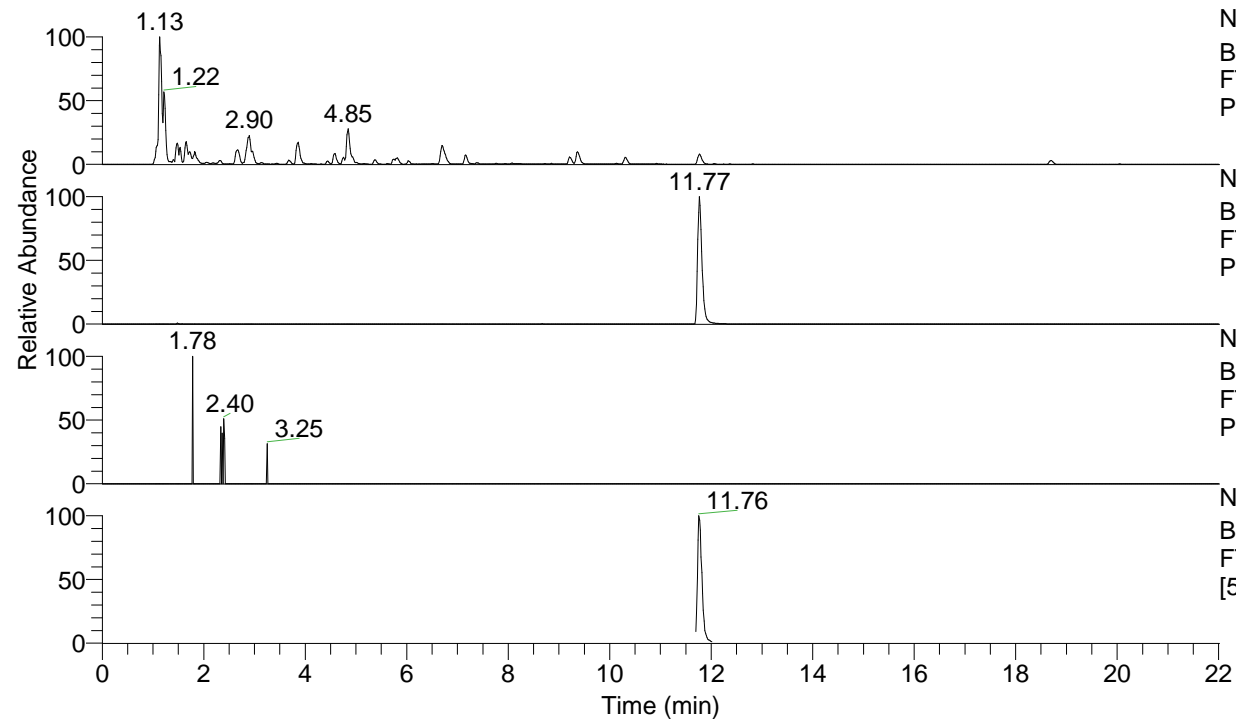


RT: 0.00 - 22.01



NL: 4.34E8
 Base Peak m/z= 100.00000-1500.00000 F:
 FTMS + p ESI Full ms [100.00-1500.00] MS
 Pbistriata20

NL: 3.54E7
 Base Peak m/z= 267.14438-267.14706 F:
 FTMS + p ESI Full ms [100.00-1500.00] MS
 Pbistriata20

NL: 3.82E3
 Base Peak m/z= 134.07610-134.07744 F:
 FTMS + p ESI Full ms [100.00-1500.00] MS
 Pbistriata20

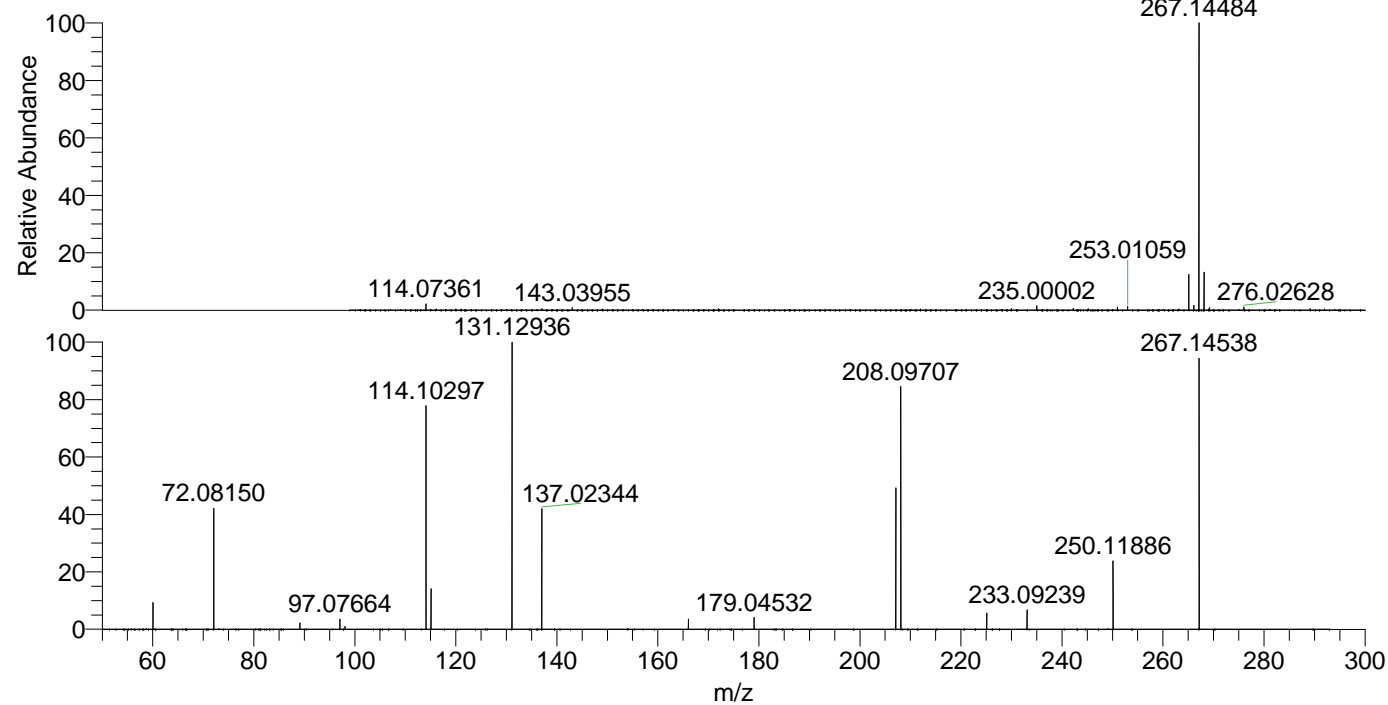
NL: 3.79E6
 Base Peak m/z= 50.00000-1500.00000 F:
 FTMS + p ESI d Full ms2 267.14@hcd35.00
 [50.00-290.00] MS Pbistriata20

Pbistriata20#4792-4856 RT: 11.70-11.86

F: FTMS + p ESI d Full ms2 267.14@h ...

m/z= 50.00000-1000.00000

m/z	Intensity	Relative
60.05650	182478.8	9.36
72.08150	836816.6	42.94
89.10789	41462.2	2.13
97.07664	68724.4	3.53
98.06055	17866.1	0.92
114.10297	1506115.0	77.29
115.08695	284925.6	14.62
131.12936	1948662.4	100.00
137.02344	812344.9	41.69
166.05012	68511.6	3.52
179.04532	81414.4	4.18
207.11298	952217.1	48.87
208.09707	1641351.5	84.23
225.12322	109840.9	5.64
233.09239	130699.6	6.71
250.11886	462749.6	23.75
267.14538	1827535.1	93.78



NL: 3.52E7
 Pbistriata20#4819 RT:
 11.77 AV: 1 T: FTMS + p
 ESI Full lock ms
 [100.00-1500.00]

NL: 1.93E6
 Pbistriata20#4792-4861
 RT: 11.70-11.86 AV: 12 F:
 FTMS + p ESI d Full ms2
 267.14@hcd35.00
 [50.00-290.00]