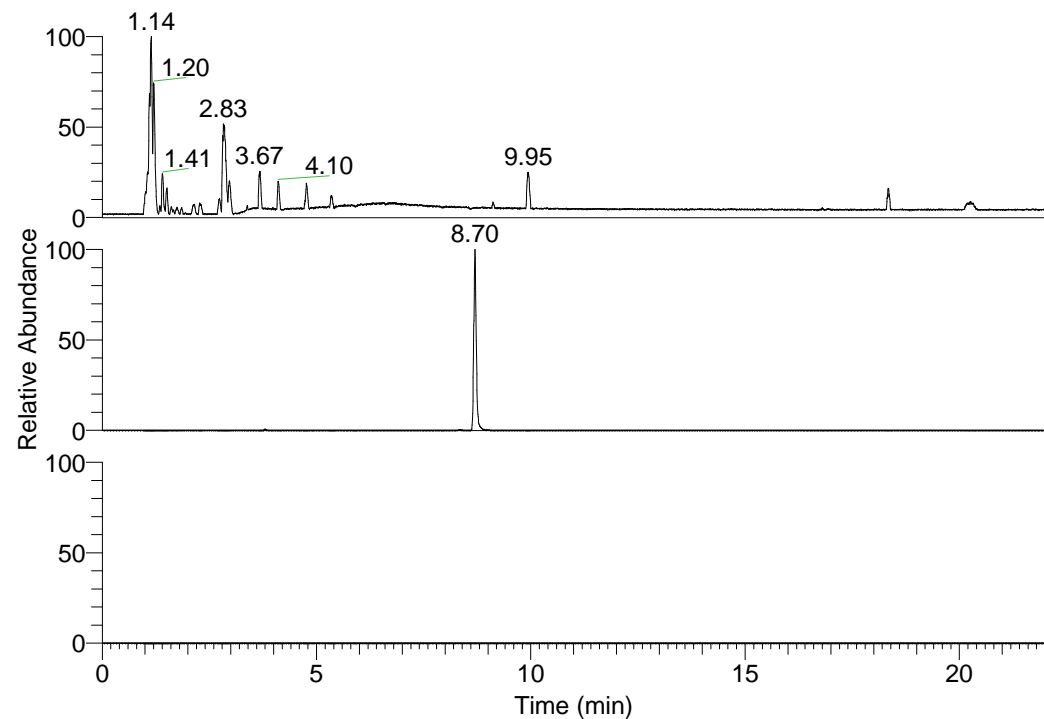


RT: 0.00 - 22.01



NL: 3.85E8
Base Peak m/z=
100.00000-1500.00000 F:
FTMS + p ESI Full ms
[100.00-1500.00] MS
Pbistriata_HDX

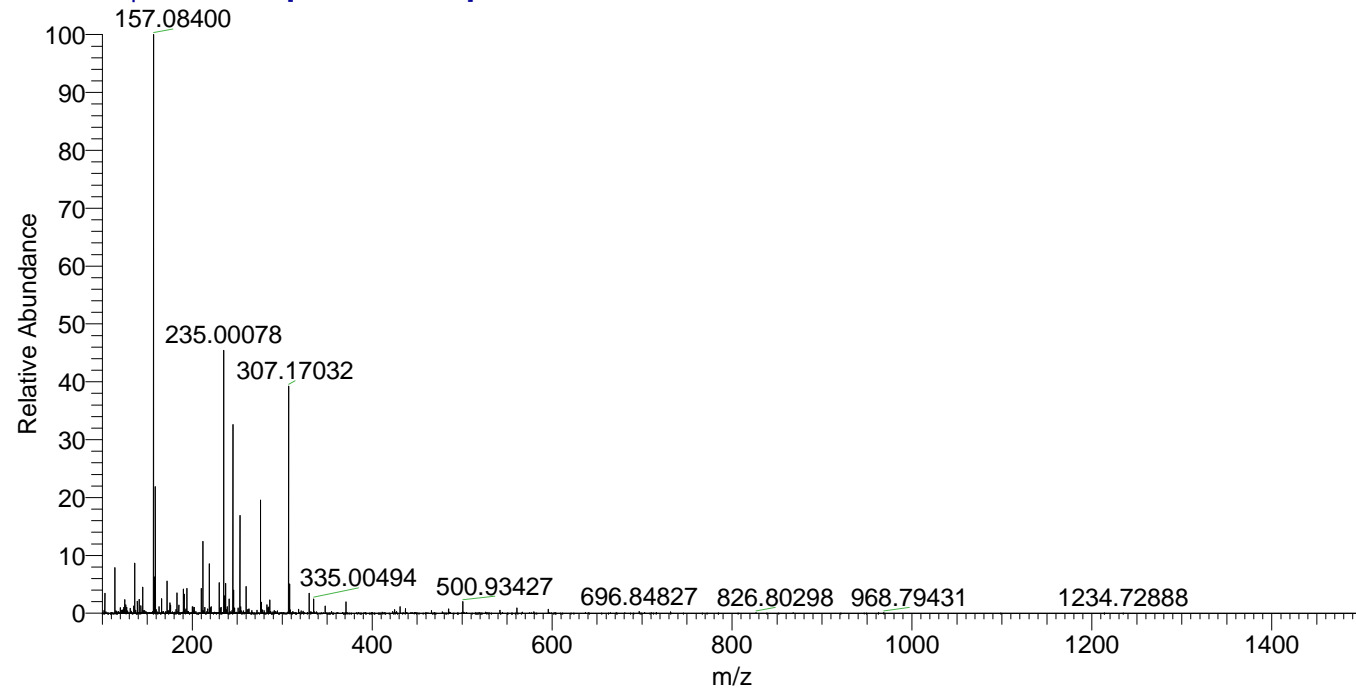
NL: 7.30E6
Base Peak m/z=
245.17600-245.17846 F: FTMS
+ p ESI Full ms
[100.00-1500.00] MS
Pbistriata_HDX

NL: 0
Base Peak m/z=
123.59505-123.59629 F: FTMS
+ p ESI Full ms
[100.00-1500.00] MS
Pbistriata_HDX

Pbistriata_HDX#1423 RT: 8.70
T: FTMS + p ESI Full ms [100.00-1500.00]
m/z= 245.00000-246.00000

m/z	Intensity	Relative	Delta (ppm)	Composition
245.17729	6929301.0	100.00	2.50	C ₁₂ H ₁₃ ² H ₆ O ₃ N ₂
			-3.82	C ₁₂ H ₁₅ ² H ₅ O ₃ N ₂
			8.81	C ₁₂ H ₁₁ ² H ₇ O ₃ N ₂

Pbistriata_HDX #1423 RT: 8.70 AV: 1 NL: 2.12E7
T: FTMS + p ESI Full ms [100.00-1500.00]



Pbistriata_HDX #1423 RT: 8.70 AV: 1 NL: 6.91E6
T: FTMS + p ESI Full ms [100.00-1500.00]

