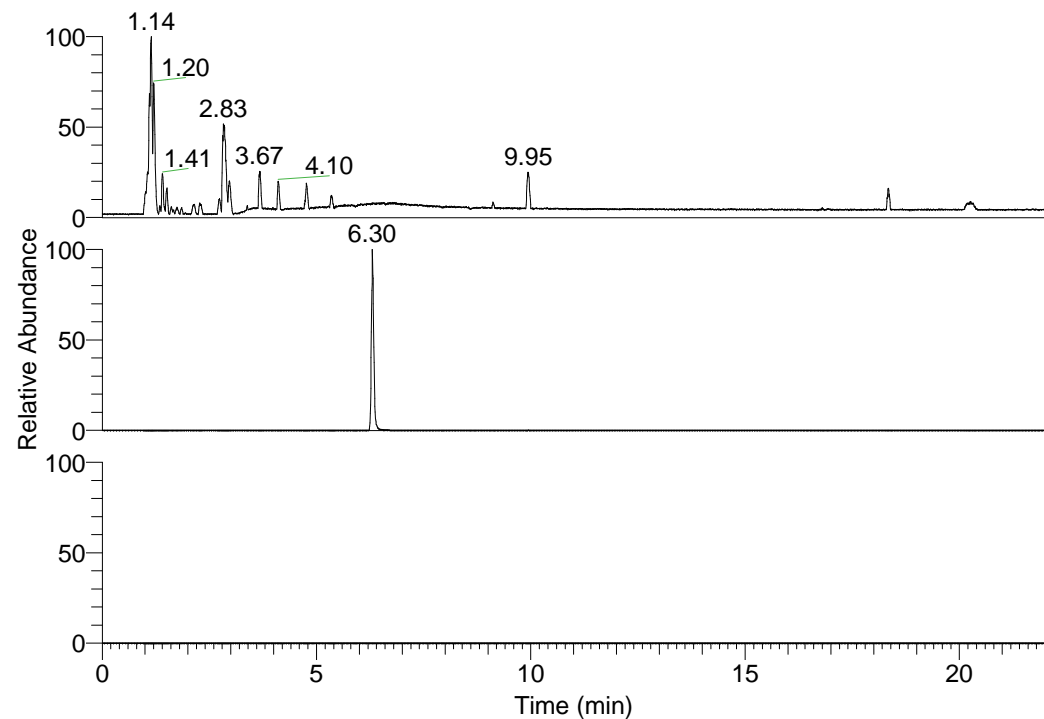


RT: 0.00 - 22.01



NL: 3.85E8
Base Peak m/z=
100.00000-1500.00000 F:
FTMS + p ESI Full ms
[100.00-1500.00] MS
Pbistriata_HDX

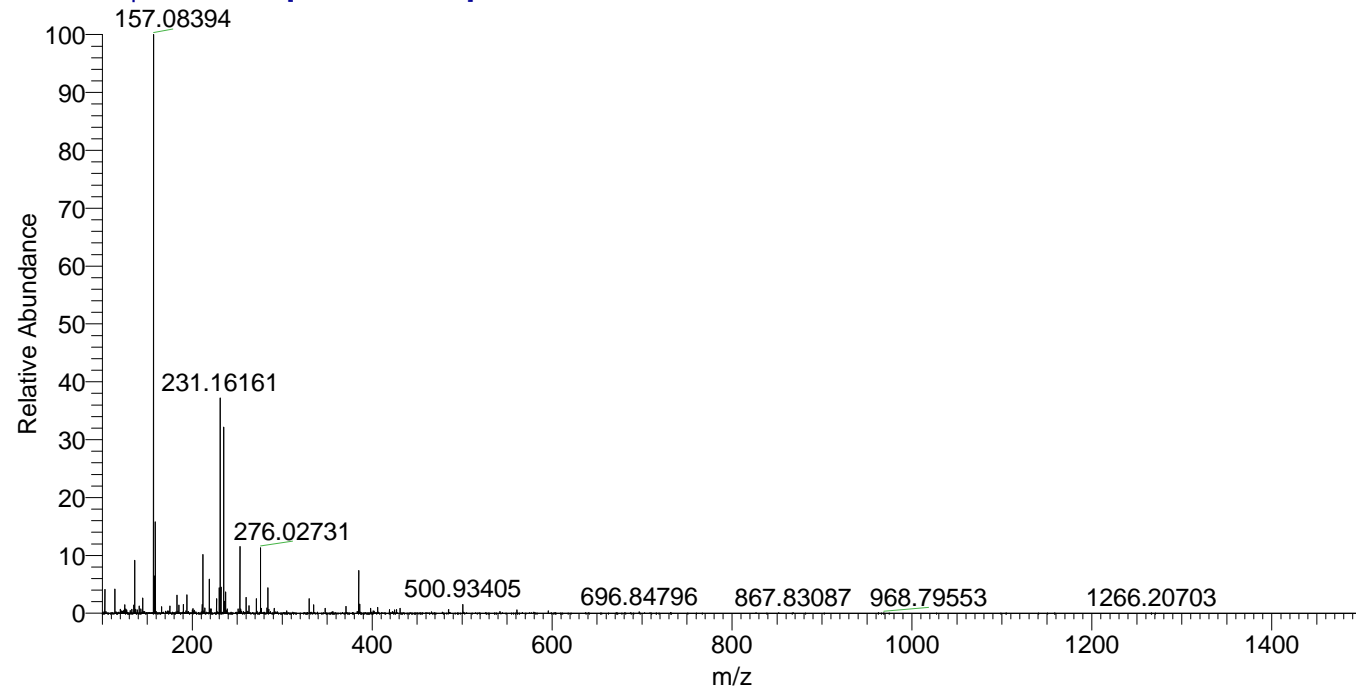
NL: 1.15E7
Base Peak m/z=
231.16042-231.16274 F: FTMS
+ p ESI Full ms
[100.00-1500.00] MS
Pbistriata_HDX

NL: 0
Base Peak m/z=
116.58726-116.58842 F: FTMS
+ p ESI Full ms
[100.00-1500.00] MS
Pbistriata_HDX

Pbistriata_HDX#1030 RT: 6.30
T: FTMS + p ESI Full ms [100.00-1500.00]
m/z= 231.00000-232.00000

| m/z | Intensity | Relative | Delta (ppm) | Composition |
|-----------|------------|----------|-------------|---|
| 231.16161 | 11521057.0 | 100.00 | 2.49 | C ₁₁ H ₁₁ ² H ₆ O ₃ N ₂ |
| | | | -4.20 | C ₁₁ H ₁₃ ² H ₅ O ₃ N ₂ |
| | | | 9.19 | C ₁₁ H ₉ ² H ₇ O ₃ N ₂ |

Pbistriata_HDX #1030 RT: 6.30 AV: 1 NL: 3.09E7
T: FTMS + p ESI Full ms [100.00-1500.00]



Pbistriata_HDX #1030 RT: 6.30 AV: 1 NL: 1.15E7
T: FTMS + p ESI Full ms [100.00-1500.00]

