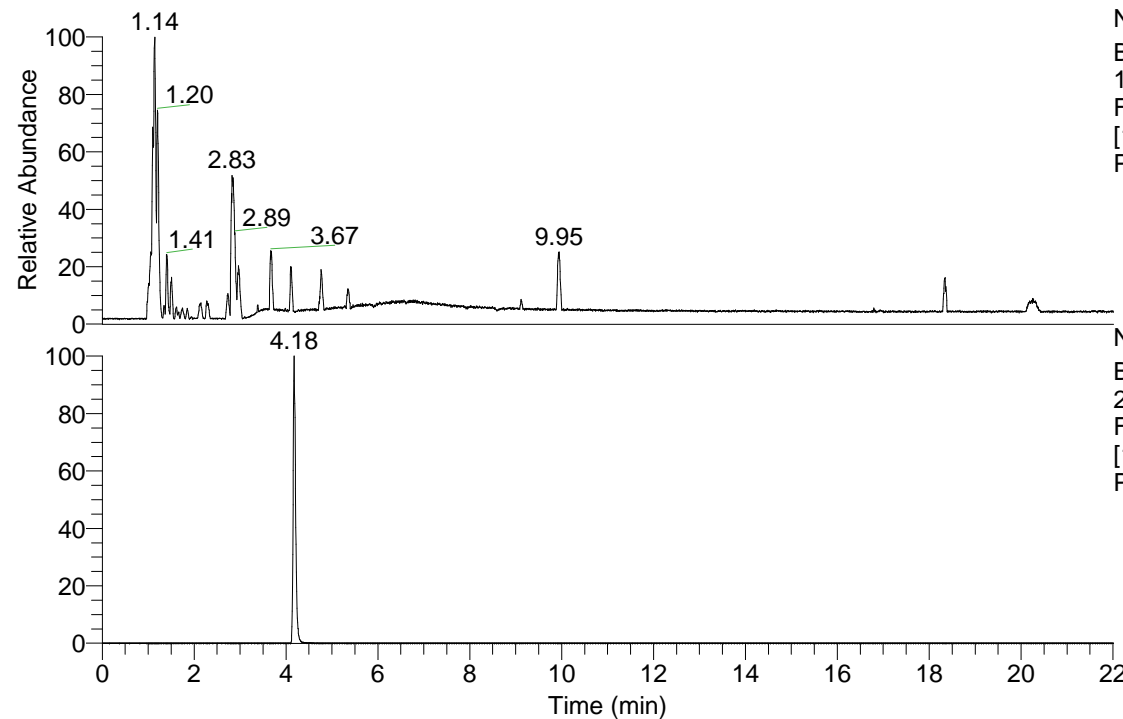


RT: 0.00 - 22.01



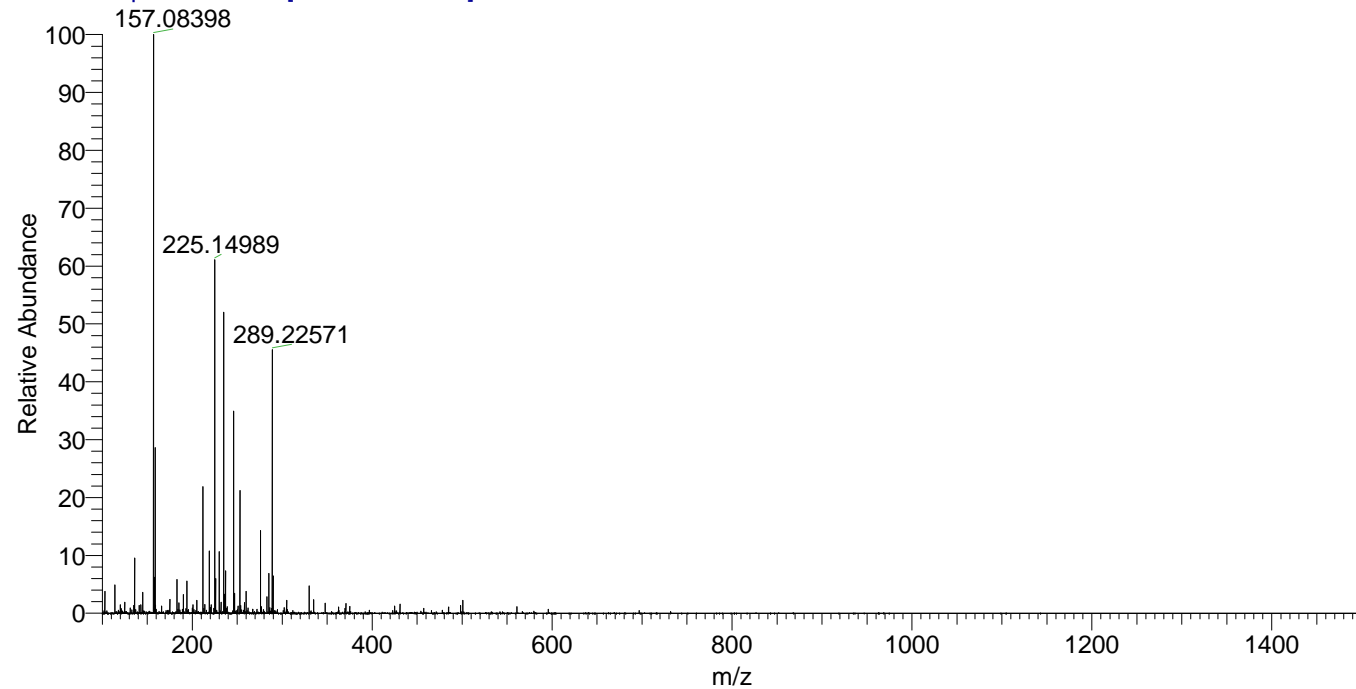
NL: 3.85E8
Base Peak m/z=
100.00000-1500.00000
F: FTMS + p ESI Full ms
[100.00-1500.00] MS
Pbistriata_HDX

Pbistriata_HDX#679 RT: 4.18
T: FTMS + p ESI Full ms [100.00-1500.00]
m/z= 225.00000-226.00000

m/z	Intensity	Relative	Delta (ppm)	Composition
225.14989	10461523.0	100.00	2.46	C ₉ H ₁₃ ² H ₅ O ₅ N
			-4.42	C ₉ H ₁₅ ² H ₄ O ₅ N
			9.34	C ₉ H ₁₁ ² H ₆ O ₅ N

NL: 1.05E7
Base Peak m/z=
225.14875-225.15101 F:
FTMS + p ESI Full ms
[100.00-1500.00] MS
Pbistriata_HDX

Pbistriata_HDX #679 RT: 4.18 AV: 1 NL: 1.71E7
T: FTMS + p ESI Full ms [100.00-1500.00]



Pbistriata_HDX #679 RT: 4.18 AV: 1 NL: 1.05E7
T: FTMS + p ESI Full ms [100.00-1500.00]

