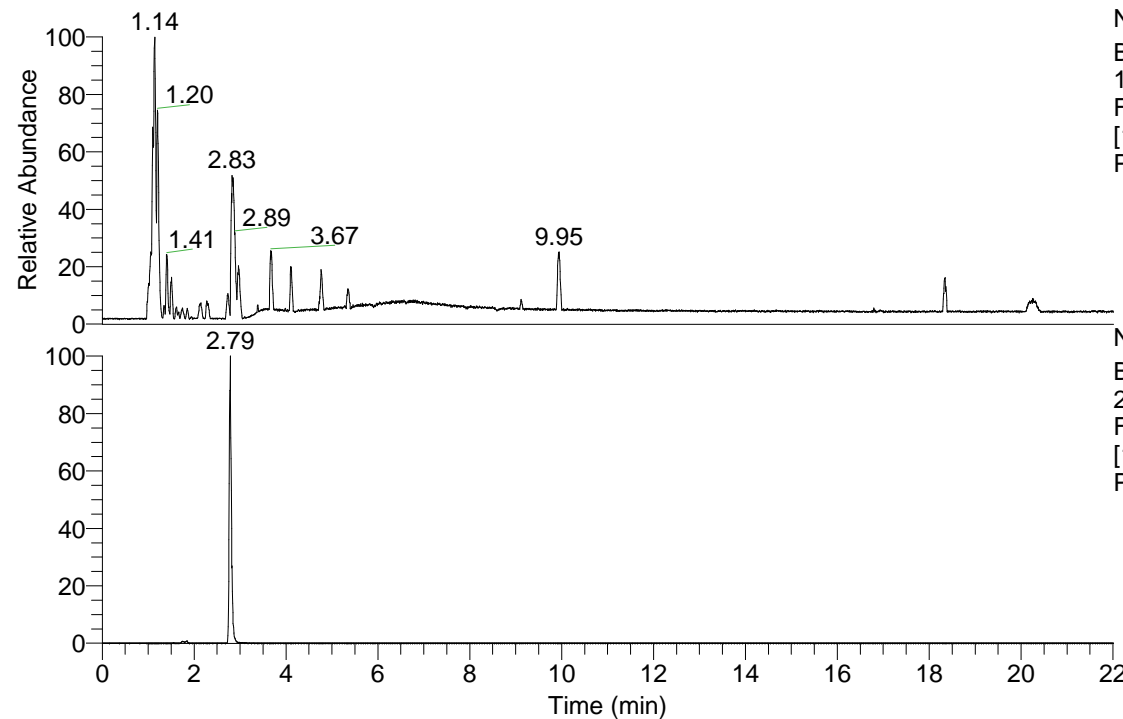


RT: 0.00 - 22.01



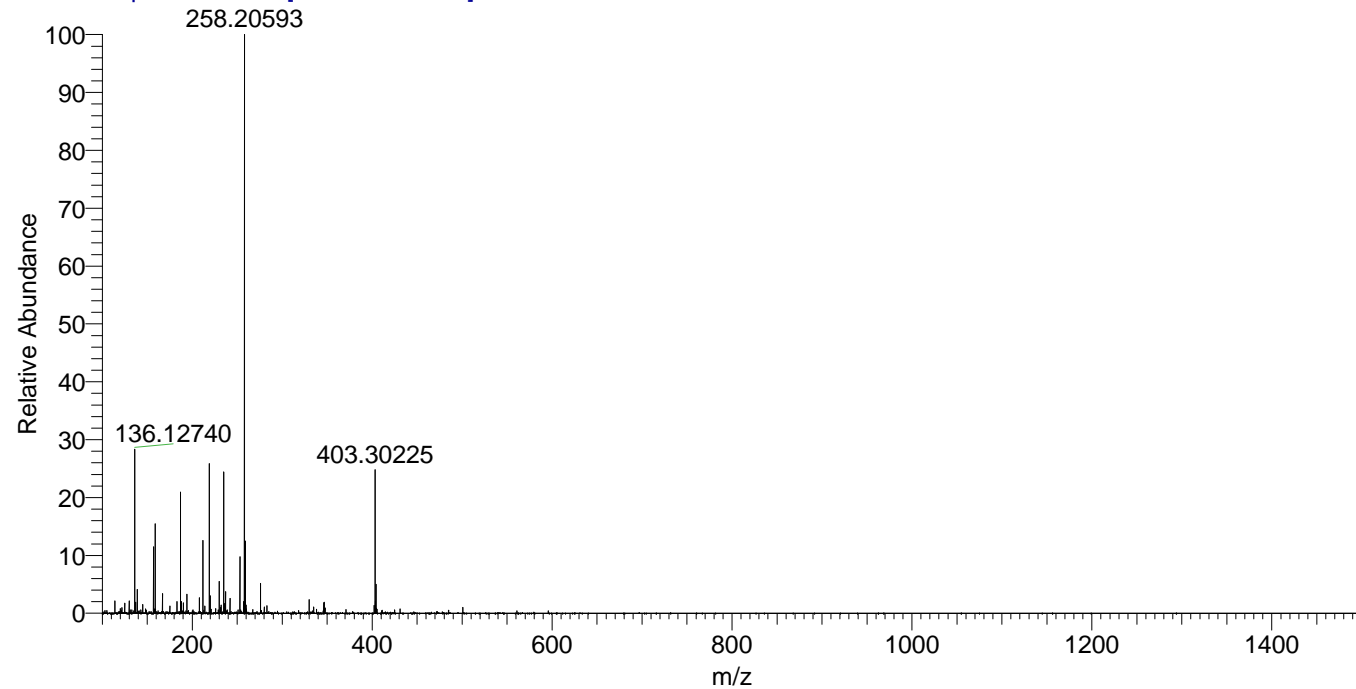
NL: 3.85E8  
 Base Peak m/z=  
 100.00000-1500.00000  
 F: FTMS + p ESI Full ms  
 [100.00-1500.00] MS  
 Pbistriata\_HDX

NL: 9.52E6  
 Base Peak m/z=  
 219.14441-219.14661 F:  
 FTMS + p ESI Full ms  
 [100.00-1500.00] MS  
 Pbistriata\_HDX

Pbistriata\_HDX#449 RT: 2.79  
 T: FTMS + p ESI Full ms [100.00-1500.00]  
 m/z= 219.00000-220.00000

m/z	Intensity	Relative	Delta (ppm)	Composition
219.14548	9522262.0	100.00	2.35	C <sub>10</sub> H <sub>19</sub> <sup>2</sup> H O <sub>4</sub> N
			-4.71	C <sub>10</sub> H <sub>21</sub> O <sub>4</sub> N
			9.42	C <sub>10</sub> H <sub>17</sub> <sup>2</sup> H <sub>2</sub> O <sub>4</sub> N

Pbistriata\_HDX #449 RT: 2.79 AV: 1 NL: 3.50E7  
 T: FTMS + p ESI Full ms [100.00-1500.00]



Pbistriata\_HDX #449 RT: 2.79 AV: 1 NL: 9.04E6  
 T: FTMS + p ESI Full ms [100.00-1500.00]

