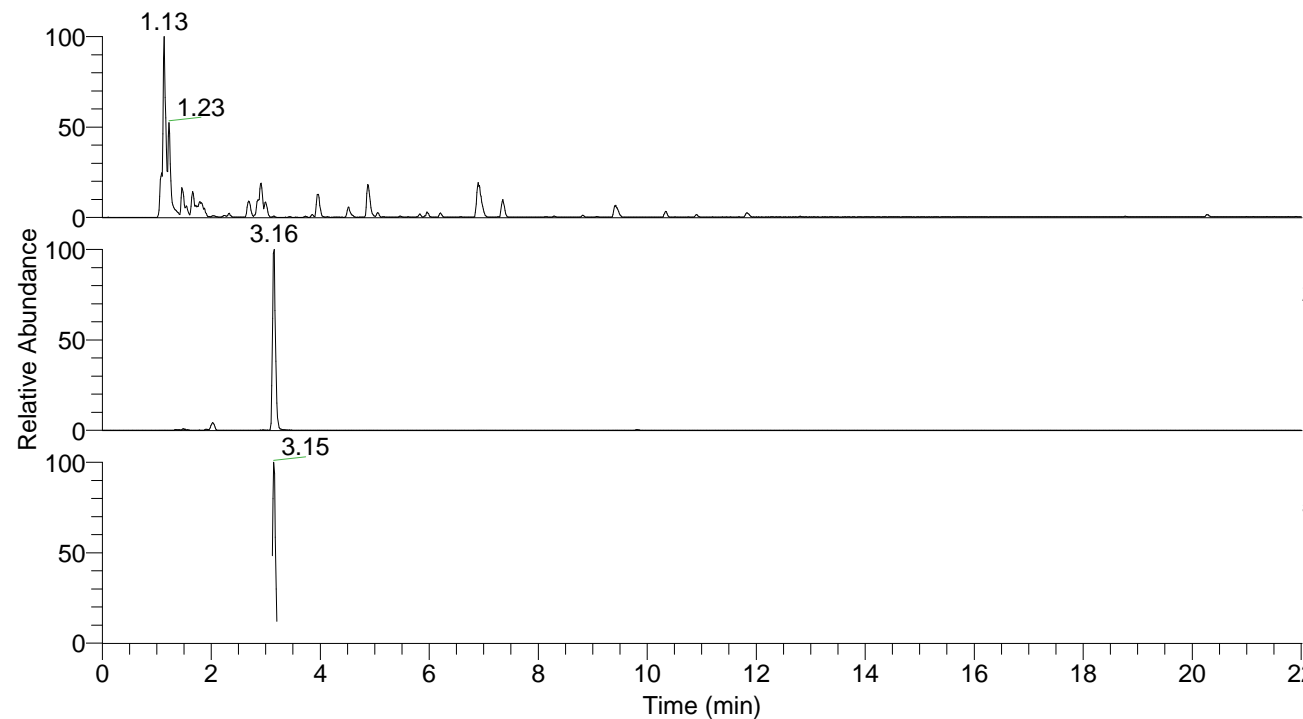


RT: 0.00 - 22.01



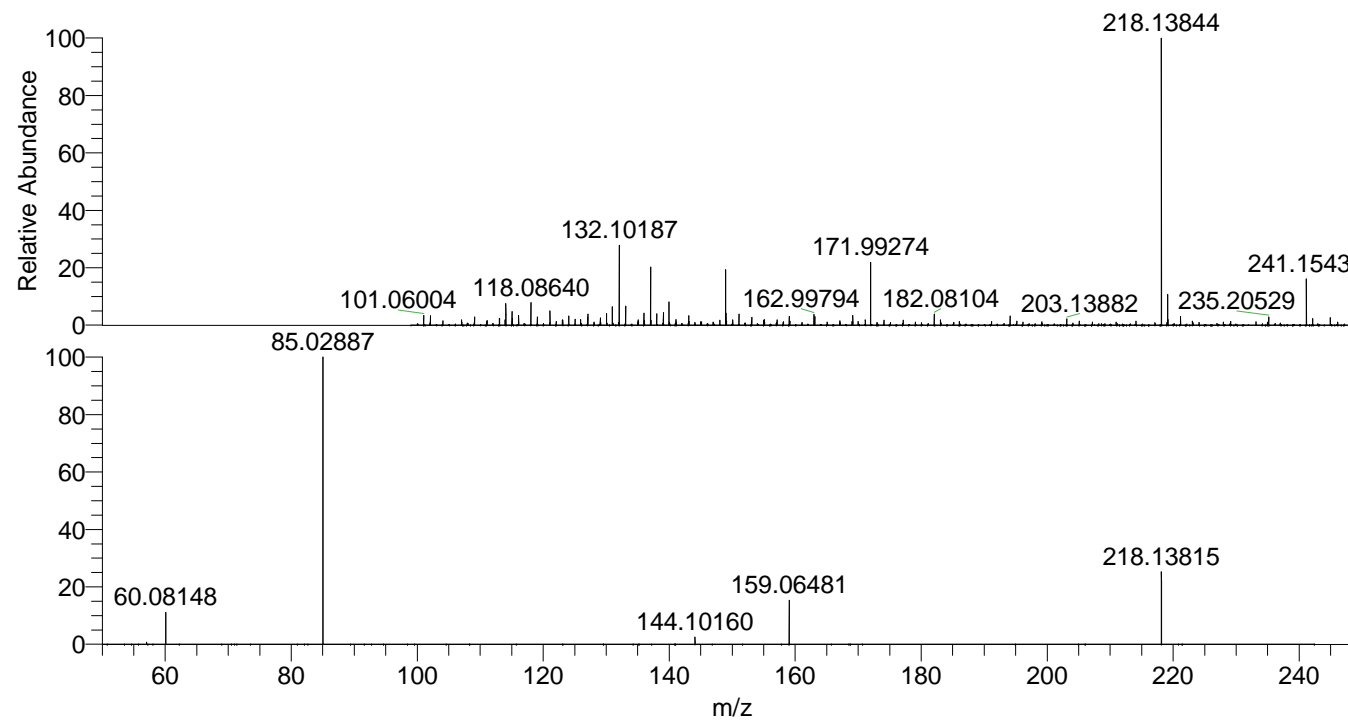
NL: 8.91E8  
 Base Peak m/z=  
 100.00000-1500.00000 F: FTMS + p  
 ESI Full ms [100.0000-1500.0000]  
 MS Pbistriata

NL: 6.62E6  
 Base Peak m/z=  
 218.13705-218.14141 F: FTMS + p  
 ESI Full ms [100.0000-1500.0000]  
 MS Pbistriata

NL: 1.85E6  
 Base Peak m/z=  
 50.00000-1500.00000 F: FTMS + p  
 ESI d Full ms2 218.1384@hcd35.00  
 [50.0000-240.0000] MS Pbistriata

Pbistriata#1354-1388 RT: 3.12-3.21 AV: 7  
 F: FTMS + p ESI d Full ms2 218.1400 ...  
 m/z= 50.00000-1000.00000

m/z	Intensity	Relative
57.03429	7321.6	0.69
60.08148	117696.6	11.12
85.02887	1058813.8	100.00
144.10160	27125.9	2.56
159.06481	161764.9	15.28
218.13815	266425.2	25.16



NL: 6.62E6  
 Pbistriata#1369 RT: 3.16  
 AV: 1 T: FTMS + p ESI Full  
 ms [100.0000-1500.0000]

NL: 1.05E6  
 Pbistriata#1348-1390 RT:  
 3.12-3.21 AV: 7 F: FTMS +  
 p ESI d Full ms2  
 218.1384@hcd35.00  
 [50.0000-240.0000]