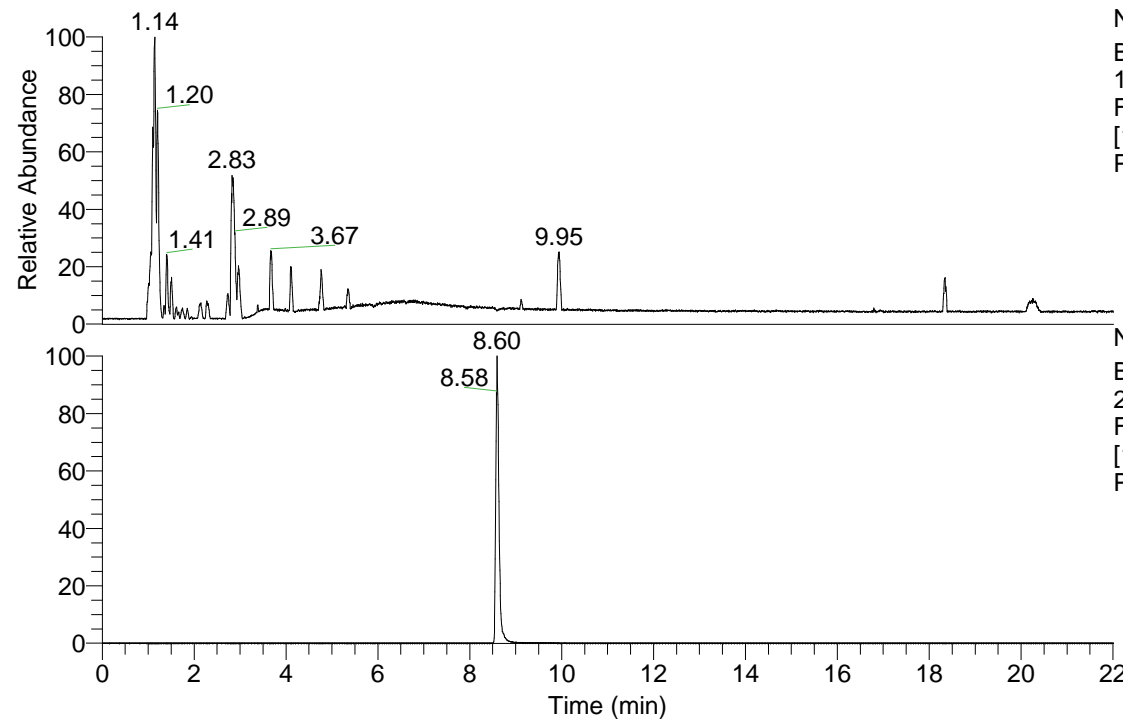


RT: 0.00 - 22.01



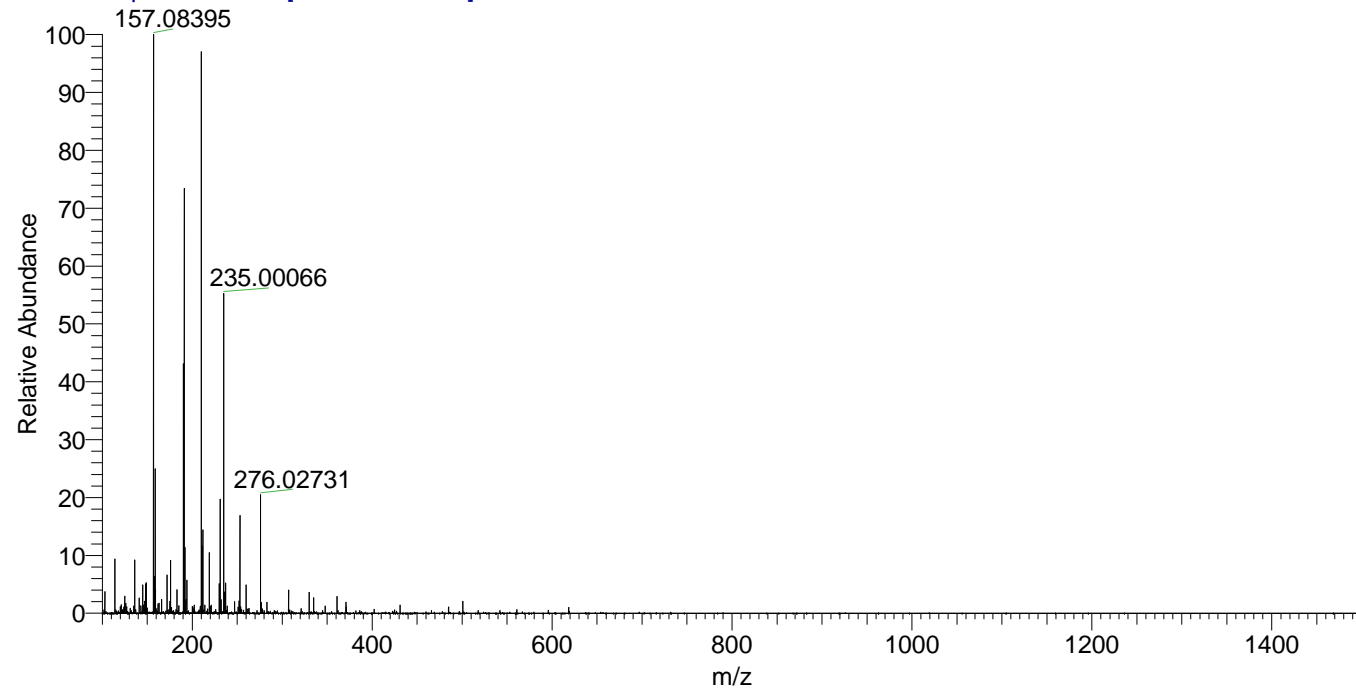
NL: 3.85E8
 Base Peak m/z=
 100.00000-1500.00000
 F: FTMS + p ESI Full ms
 [100.00-1500.00] MS
 Pbistriata_HDX

NL: 1.86E7
 Base Peak m/z=
 210.12804-210.13014 F:
 FTMS + p ESI Full ms
 [100.00-1500.00] MS
 Pbistriata_HDX

Pbistriata_HDX#1406 RT: 8.60
 T: FTMS + p ESI Full ms [100.00-1500.00]
 m/z= 210.00000-211.00000

m/z	Intensity	Relative	Delta (ppm)	Composition
210.12903	16861986.0	100.00	2.33	C ₁₁ H ₈ ² H ₅ O ₂ N ₂
			-5.03	C ₁₁ H ₁₀ ² H ₄ O ₂ N ₂
			9.70	C ₁₁ H ₆ ² H ₆ O ₂ N ₂

Pbistriata_HDX #1406 RT: 8.60 AV: 1 NL: 1.74E7
 T: FTMS + p ESI Full ms [100.00-1500.00]



Pbistriata_HDX #1406 RT: 8.60 AV: 1 NL: 1.68E7
 T: FTMS + p ESI Full ms [100.00-1500.00]

