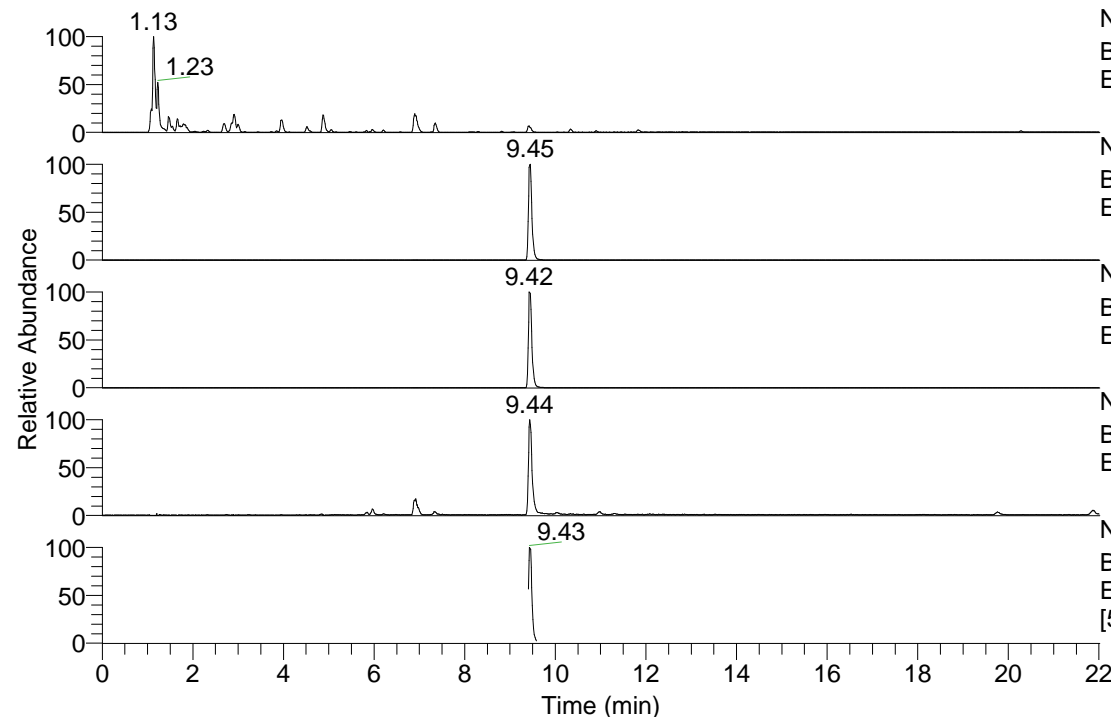


RT: 0.00 - 22.01



NL: 8.91E8
 Base Peak m/z= 100.00000-1500.00000 F: FTMS + p
 ESI Full ms [100.0000-1500.0000] MS Pbistriata

NL: 4.23E7
 Base Peak m/z= 205.09565-205.09975 F: FTMS + p
 ESI Full ms [100.0000-1500.0000] MS Pbistriata

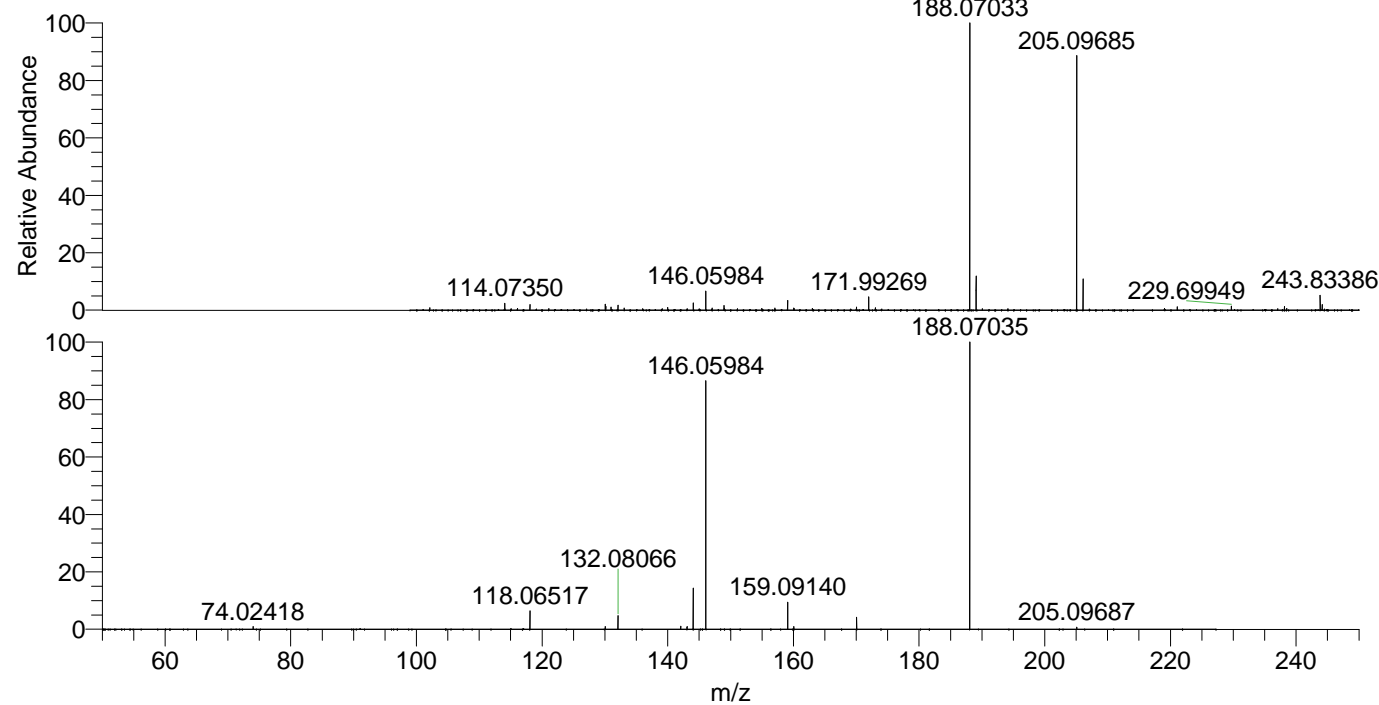
NL: 4.82E7
 Base Peak m/z= 188.06927-188.07303 F: FTMS + p
 ESI Full ms [100.0000-1500.0000] MS Pbistriata

NL: 3.45E6
 Base Peak m/z= 146.05913-146.06205 F: FTMS + p
 ESI Full ms [100.0000-1500.0000] MS Pbistriata

NL: 1.28E7
 Base Peak m/z= 50.00000-1500.00000 F: FTMS + p
 ESI d Full ms2 205.0968@hcd35.00
 [50.0000-225.0000] MS Pbistriata

Pbistriata#3934-3993 RT: 9.41-9.54 AV:
 F: FTMS + p ESI d Full ms2 205.1000 ...
 m/z= 50.00000-1000.00000

m/z	Intensity	Relative
74.02418	58560.9	0.87
118.06517	423484.5	6.31
130.06508	65372.3	0.97
132.08066	315323.6	4.70
142.06494	66440.6	0.99
143.07283	63292.0	0.94
144.04421	45241.0	0.67
144.08063	930276.3	13.86
146.05984	5616297.0	83.70
159.09140	621076.5	9.26
160.07542	60550.6	0.90
170.05972	278056.3	4.14
188.07035	6709878.0	100.00
205.09687	48529.2	0.72



NL: 4.73E7
 Pbistriata#3955 RT: 9.45
 AV: 1 T: FTMS + p ESI Full
 ms [100.0000-1500.0000]

NL: 6.48E6
 Pbistriata#3918-3995 RT:
 9.41-9.54 AV: 10 F: FTMS
 + p ESI d Full ms2
 205.0968@hcd35.00
 [50.0000-225.0000]