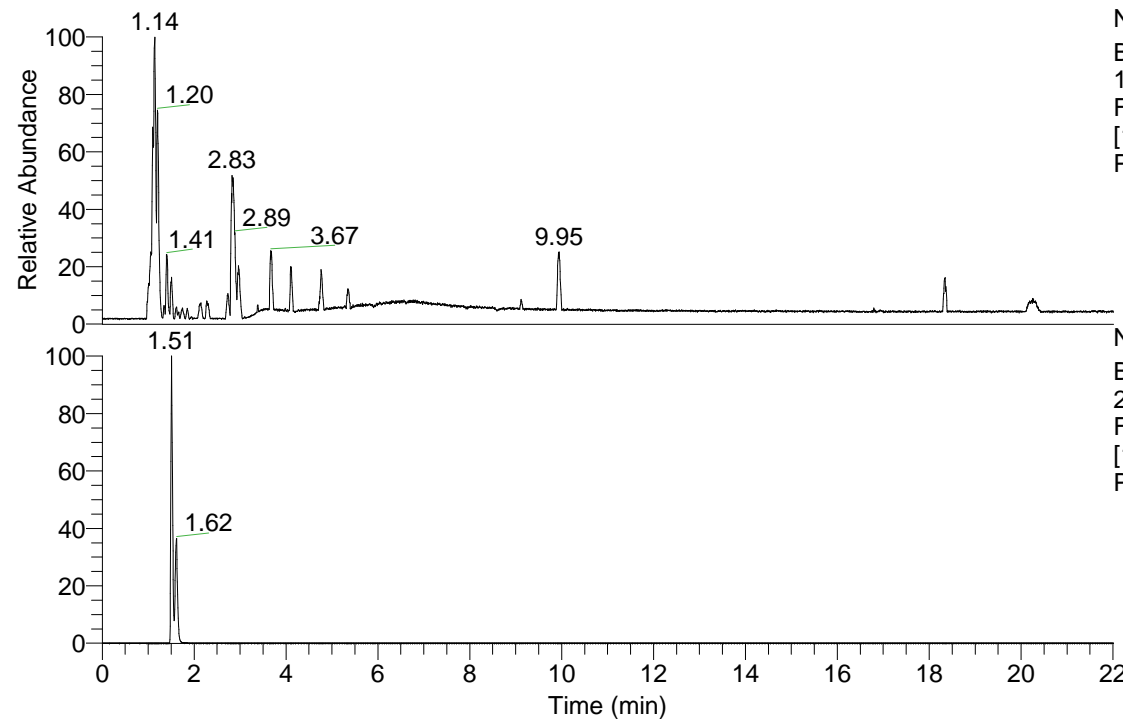


RT: 0.00 - 22.01



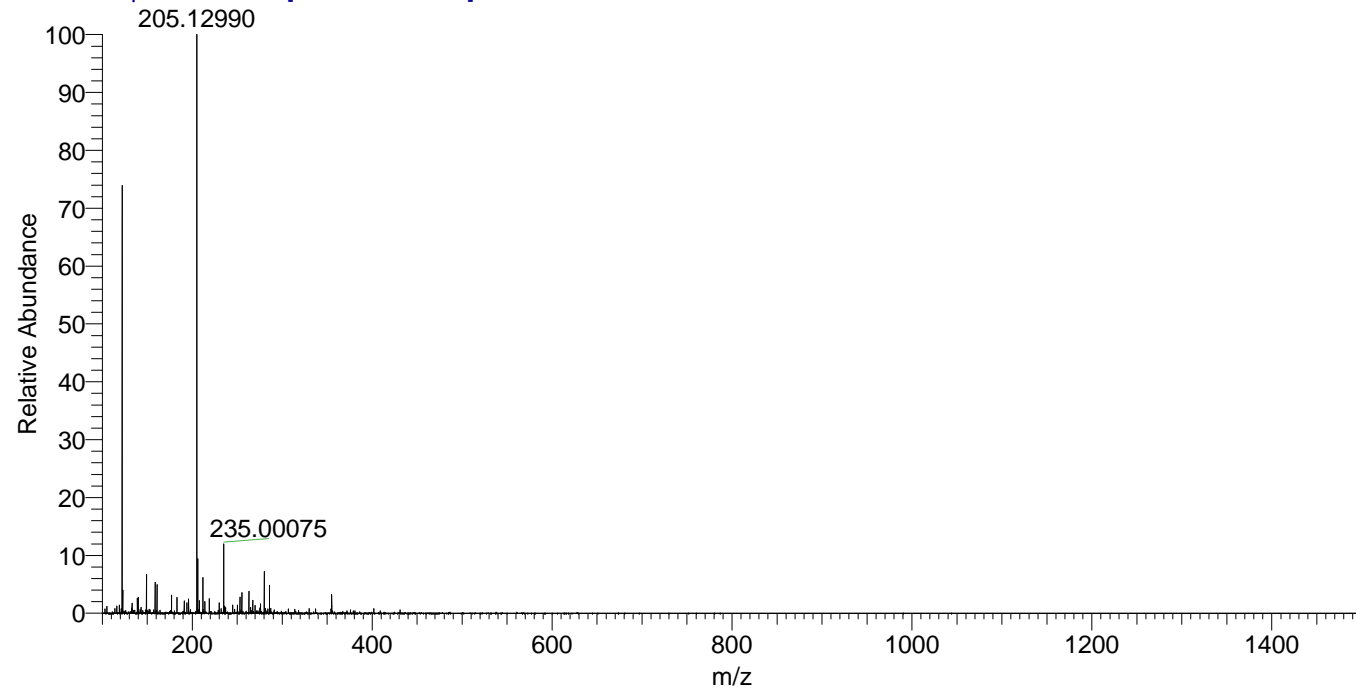
NL: 3.85E8
Base Peak m/z=
100.00000-1500.00000
F: FTMS + p ESI Full ms
[100.00-1500.00] MS
Pbistriata_HDX

Pbistriata_HDX#242 RT: 1.51
T: FTMS + p ESI Full ms [100.00-1500.00]
m/z= 205.00000-206.00000

m/z	Intensity	Relative	Delta (ppm)	Composition
205.12990	62978588.0	100.00	2.86	C ₉ H ₁₇ ² H O ₄ N
			-4.69	C ₉ H ₁₉ O ₄ N

NL: 6.30E7
Base Peak m/z=
205.12883-205.13089 F:
FTMS + p ESI Full ms
[100.00-1500.00] MS
Pbistriata_HDX

Pbistriata_HDX #242 RT: 1.51 AV: 1 NL: 6.27E7
T: FTMS + p ESI Full ms [100.00-1500.00]



Pbistriata_HDX #242 RT: 1.51 AV: 1 NL: 6.27E7
T: FTMS + p ESI Full ms [100.00-1500.00]

