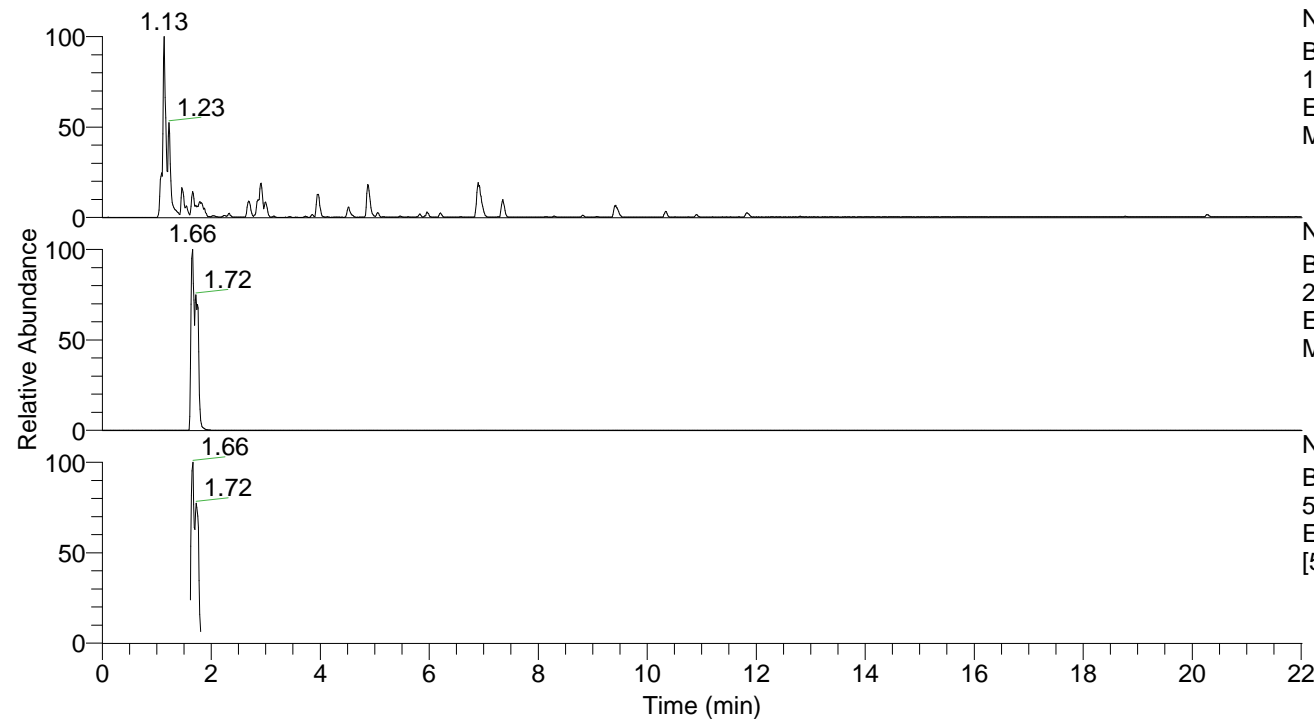


RT: 0.00 - 22.01



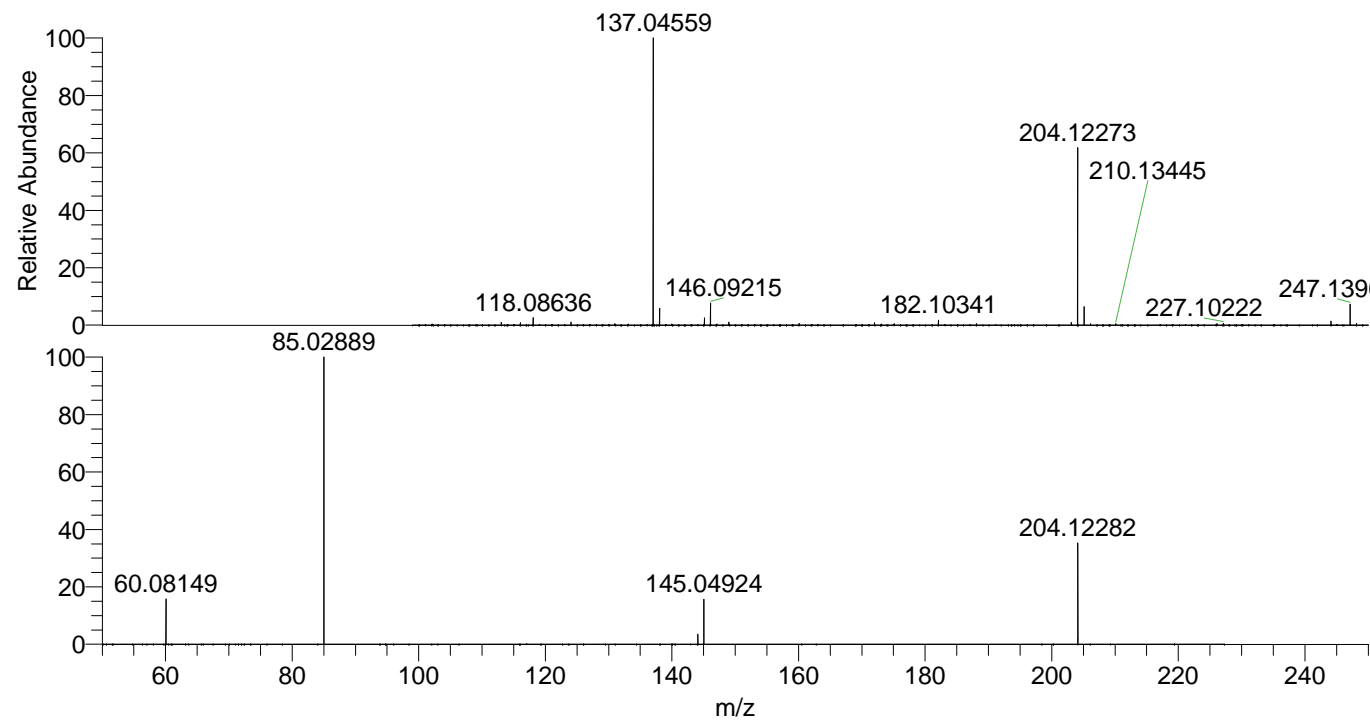
NL: 8.91E8  
 Base Peak m/z=  
 100.00000-1500.00000 F: FTMS + p  
 ESI Full ms [100.0000-1500.0000]  
 MS Pbistriata

NL: 8.01E7  
 Base Peak m/z=  
 204.12154-204.12562 F: FTMS + p  
 ESI Full ms [100.0000-1500.0000]  
 MS Pbistriata

NL: 1.89E7  
 Base Peak m/z=  
 50.00000-1500.00000 F: FTMS + p  
 ESI d Full ms2 204.1227@hcd35.00  
 [50.0000-225.0000] MS Pbistriata

Pbistriata#701-729 RT: 1.62-1.67 AV: 6  
 F: FTMS + p ESI d Full ms2 204.1200@ ...  
 m/z= 50.00000-1000.00000

m/z	Intensity	Relative
60.08149	2020528.8	15.70
85.02889	12870820.0	100.00
144.10167	460240.1	3.58
145.04924	2010470.6	15.62
204.12282	4513659.5	35.07



NL: 1.23E8  
 Pbistriata#721 RT: 1.66  
 AV: 1 T: FTMS + p ESI Full  
 ms [100.0000-1500.0000]

NL: 1.28E7  
 Pbistriata#698-732 RT:  
 1.62-1.67 AV: 6 F: FTMS +  
 p ESI d Full ms2  
 204.1227@hcd35.00  
 [50.0000-225.0000]