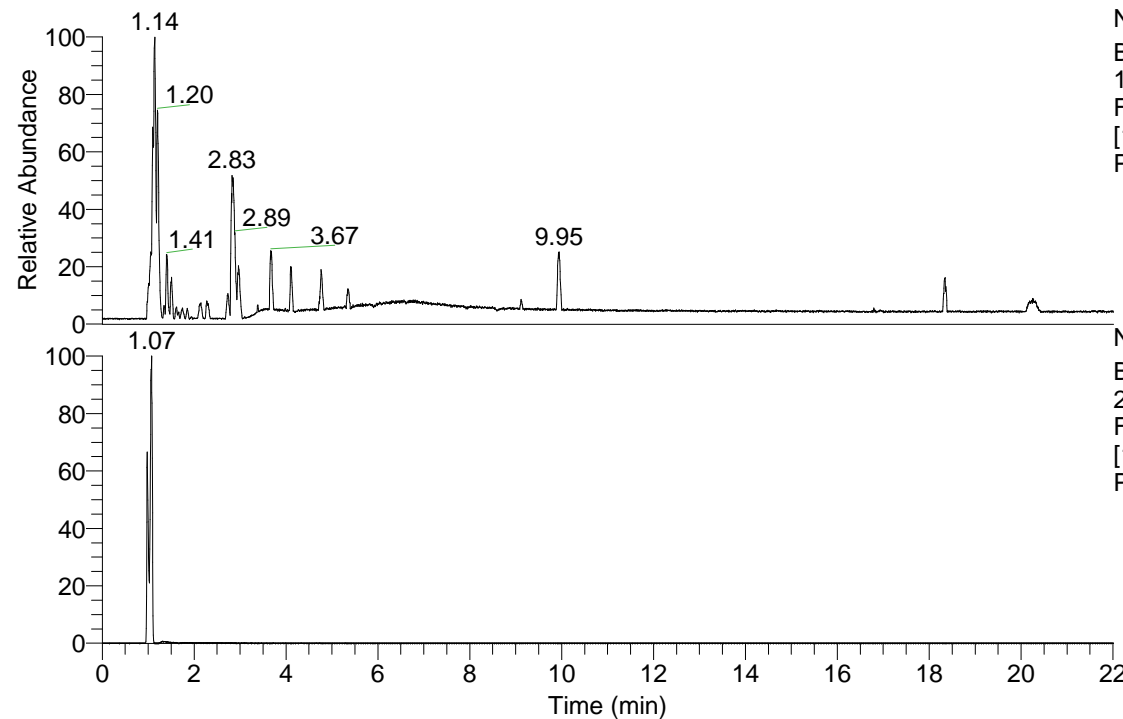


RT: 0.00 - 22.01



NL: 3.85E8
 Base Peak m/z=
 100.00000-1500.00000
 F: FTMS + p ESI Full ms
 [100.00-1500.00] MS
 Pbistriata_HDX

Pbistriata_HDX#162 RT: 1.07

T: FTMS + p ESI Full ms [100.00-1500.00]

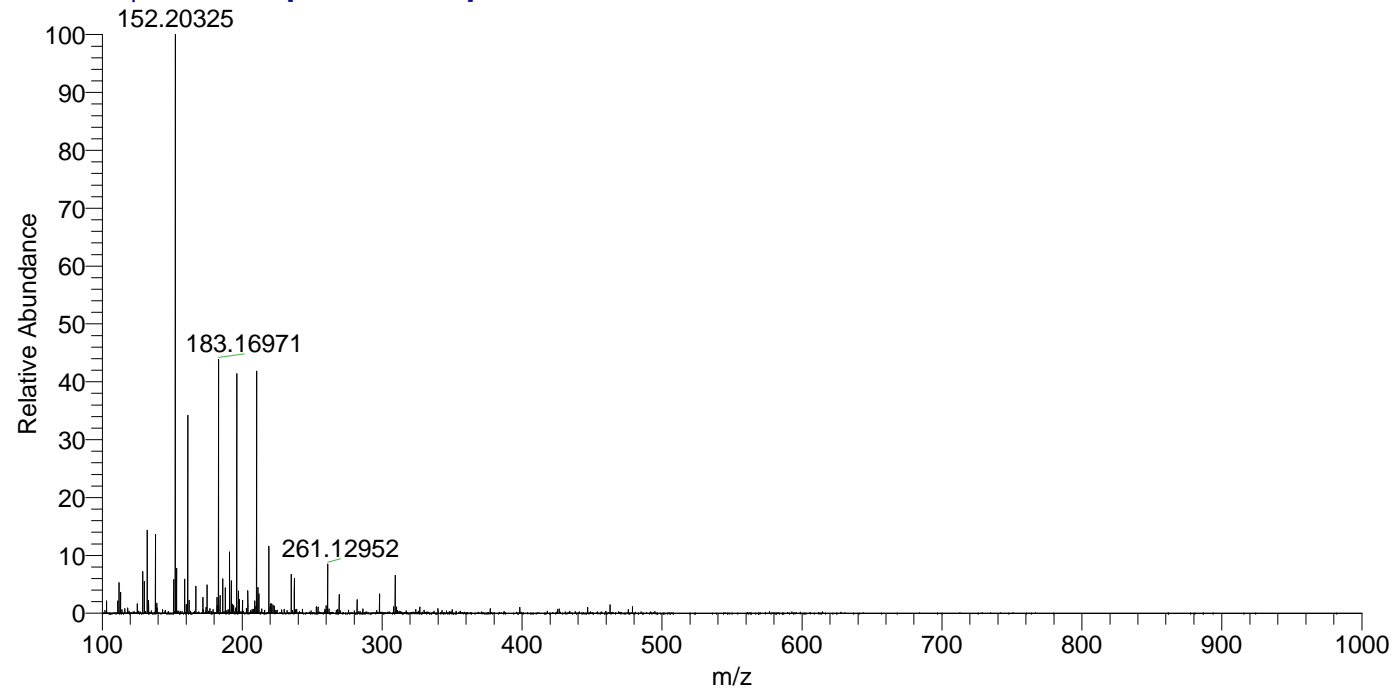
m/z= 210.00000-211.00000

m/z	Intensity	Relative	Delta (ppm)	Composition
210.26747	39925936.0	100.00	2.43	C ₁₀ H ₂₀ ² H ₇ N ₄
			-4.93	C ₁₀ H ₂₂ ² H ₆ N ₄

NL: 4.19E7
 Base Peak m/z=
 210.26646-210.26856 F:
 FTMS + p ESI Full ms
 [100.00-1500.00] MS
 Pbistriata_HDX

Pbistriata_HDX #162 RT: 1.07 AV: 1 NL: 9.29E7

T: FTMS + p ESI Full ms [100.00-1500.00]



Pbistriata_HDX #162 RT: 1.07 AV: 1 NL: 3.88E7

T: FTMS + p ESI Full ms [100.00-1500.00]

