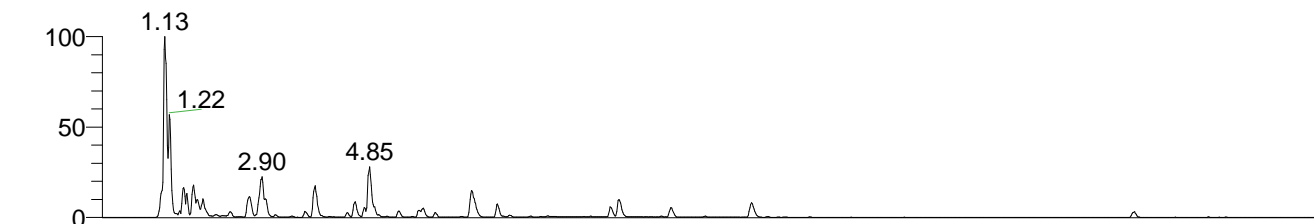


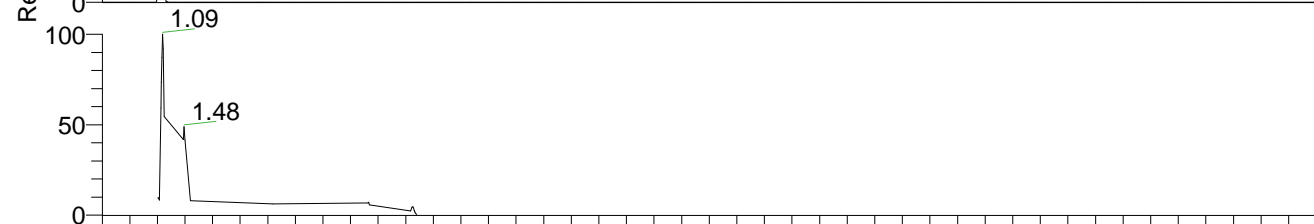
RT: 0.00 - 22.01



NL: 4.34E8  
 Base Peak m/z=  
 100.00000-1500.00000 F: FTMS +  
 p ESI Full ms [100.00-1500.00] MS  
 Pbistriata20



NL: 3.82E7  
 Base Peak m/z=  
 203.22255-203.22459 F: FTMS + p  
 ESI Full ms [100.00-1500.00] MS  
 Pbistriata20



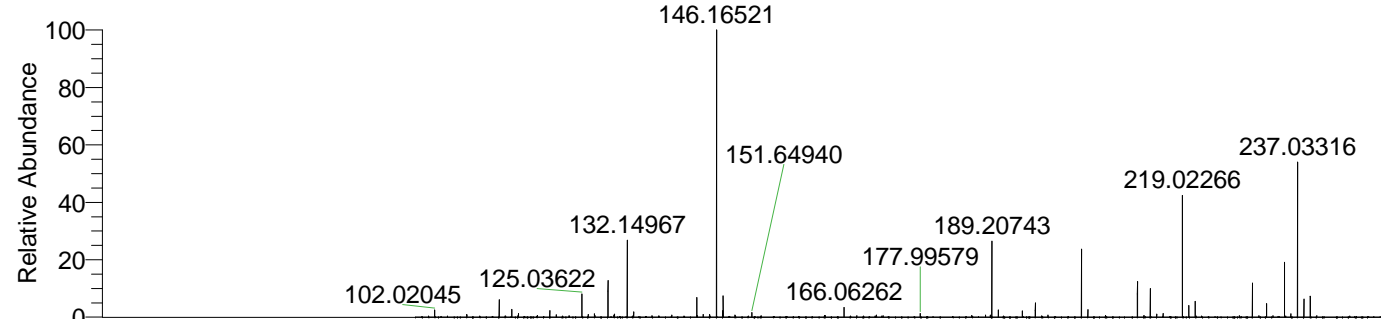
NL: 1.34E7  
 Base Peak m/z=  
 50.00000-1500.00000 F: FTMS + p  
 ESI d Full ms2 203.10@hcd35.00  
 [50.00-225.00] MS Pbistriata20

Pbistriata20#400-411 RT: 1.01-1.03 AV: 3

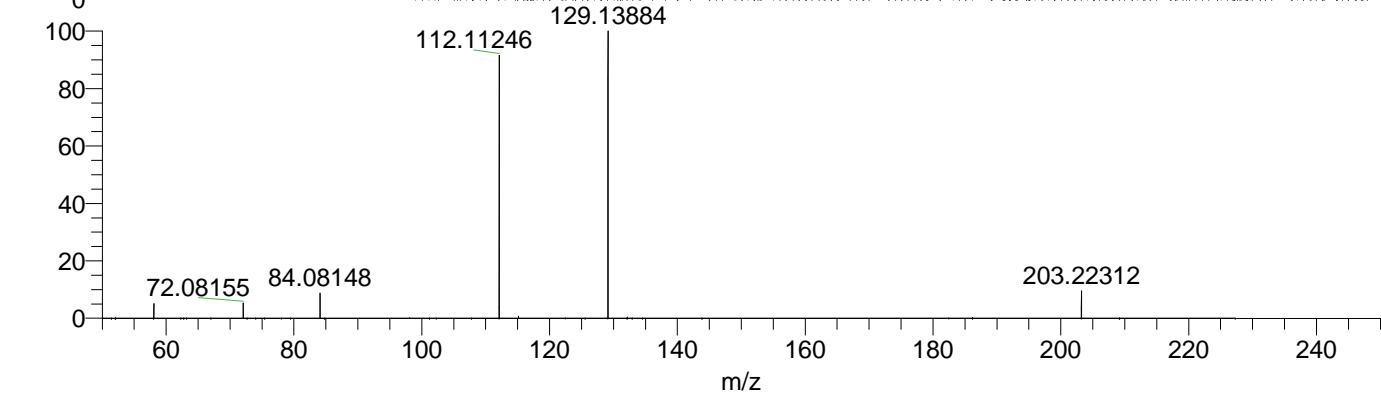
F: FTMS + p ESI d Full ms2 203.10@h ...

m/z= 50.00000-1000.00000

m/z	Intensity	Relative
58.06602	58670.1	5.08
72.08155	61737.6	5.34
84.08148	101584.0	8.79
112.11246	1071245.4	92.69
115.12332	8328.5	0.72
129.13884	1155736.6	100.00
203.22312	112003.6	9.69



NL: 1.55E7  
 Pbistriata20#409 RT: 1.03  
 AV: 1 T: FTMS + p ESI  
 Full lock ms  
 [100.00-1500.00]



NL: 1.16E6  
 Pbistriata20#399-416 RT:  
 1.01-1.03 AV: 3 F: FTMS  
 + p ESI d Full ms2  
 203.10@hcd35.00  
 [50.00-225.00]