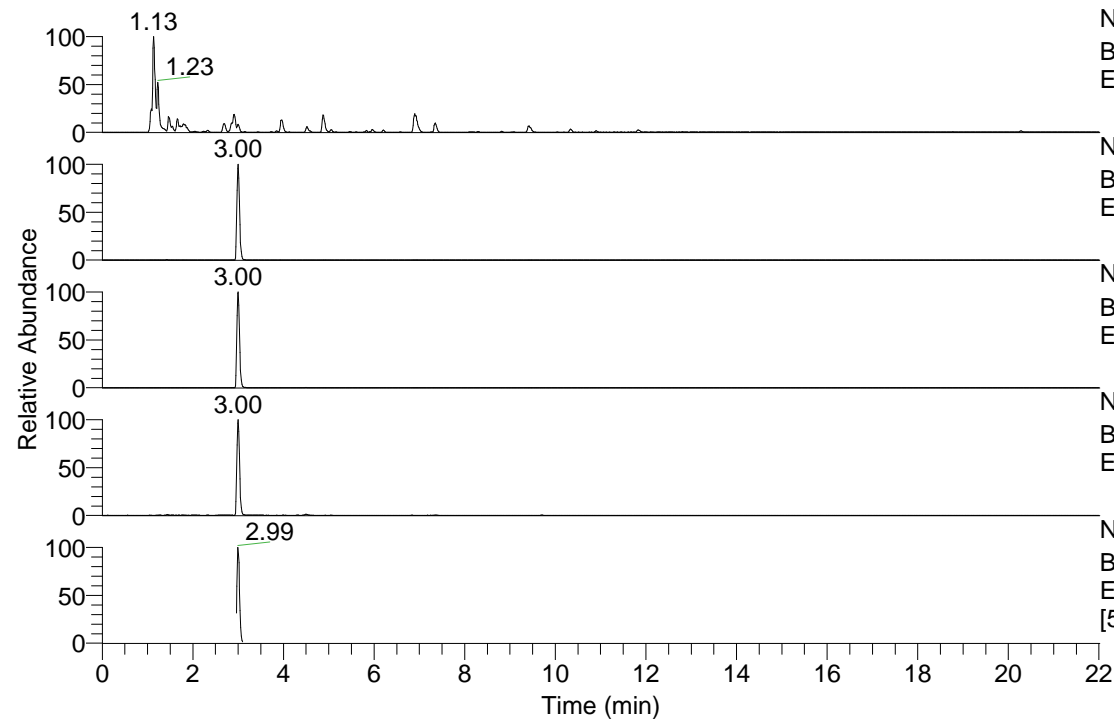


RT: 0.00 - 22.01



NL: 8.91E8

Base Peak m/z= 100.00000-1500.00000 F: FTMS + p
ESI Full ms [100.0000-1500.0000] MS Pbistriata

NL: 7.64E7

Base Peak m/z= 182.07989-182.08353 F: FTMS + p
ESI Full ms [100.0000-1500.0000] MS Pbistriata

NL: 1.56E7

Base Peak m/z= 165.05352-165.05682 F: FTMS + p
ESI Full ms [100.0000-1500.0000] MS Pbistriata

NL: 1.96E7

Base Peak m/z= 136.07488-136.07760 F: FTMS + p
ESI Full ms [100.0000-1500.0000] MS Pbistriata

NL: 2.47E7

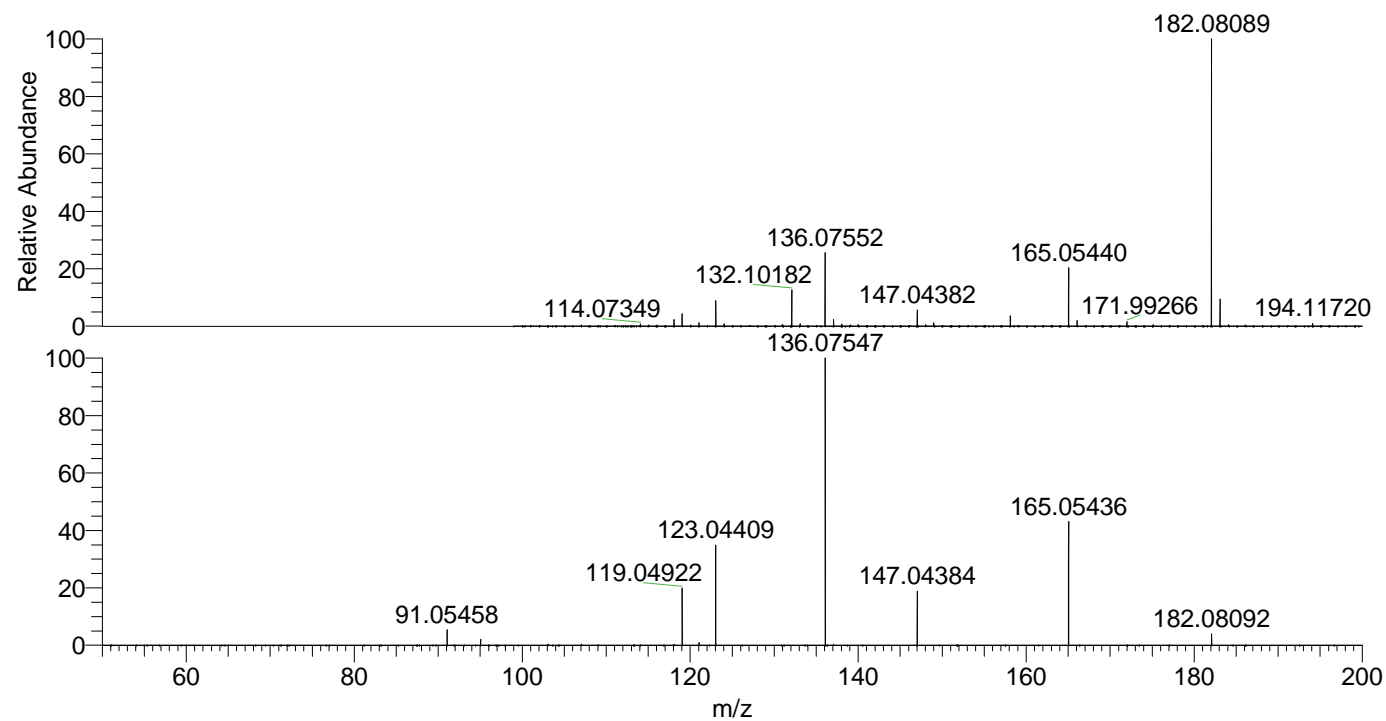
Base Peak m/z= 50.00000-1500.00000 F: FTMS + p
ESI d Full ms2 182.0809@hcd35.00
[50.0000-205.0000] MS Pbistriata

Pbistriata#1283-1334 RT: 2.96-3.07 AV: 10

F: FTMS + p ESI d Full ms2 182.0800@ ...

m/z= 50.00000-1000.00000

m/z	Intensity	Relative
91.05458	687701.9	5.27
95.04942	255459.4	1.96
119.04922	2542424.3	19.50
121.06471	118287.8	0.91
123.04409	4575518.0	35.09
136.07547	13038036.0	100.00
147.04384	2441985.0	18.73
165.05436	5662272.5	43.43
182.08092	526596.1	4.04



NL: 7.58E7

Pbistriata#1303 RT: 3.00
AV: 1 T: FTMS + p ESI Full
ms [100.0000-1500.0000]

NL: 1.40E7

Pbistriata#1274-1333 RT:
2.96-3.06 AV: 9 F: FTMS +
p ESI d Full ms2
182.0809@hcd35.00
[50.0000-205.0000]