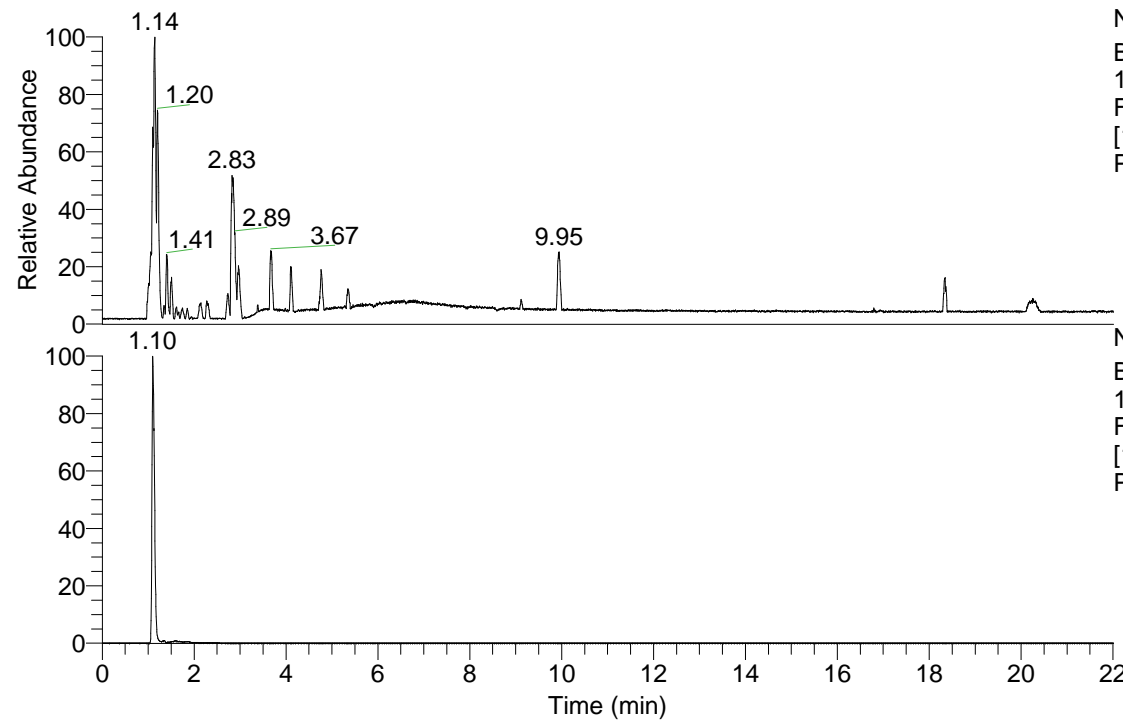


RT: 0.00 - 22.01



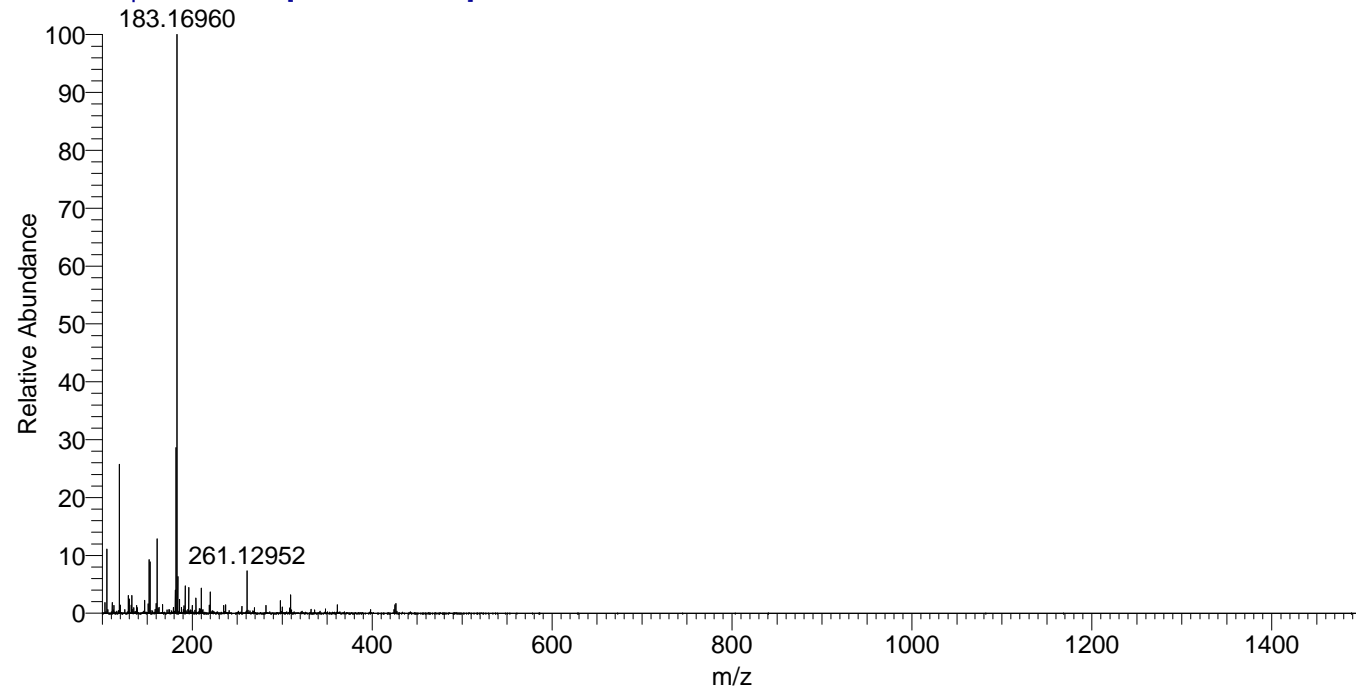
NL: 3.85E8
Base Peak m/z=
100.00000-1500.00000
F: FTMS + p ESI Full ms
[100.00-1500.00] MS
Pbistriata_HDX

Pbistriata_HDX#168 RT: 1.10
T: FTMS + p ESI Full ms [100.00-1500.00]
m/z= 183.00000-184.00000

m/z	Intensity	Relative	Delta (ppm)	Composition
183.16960	263796320.0	100.00	2.38	C ₆ H ₇ ² H ₈ O ₂ N ₄
			-6.08	C ₆ H ₉ ² H ₇ O ₂ N ₄

NL: 2.64E8
Base Peak m/z=
183.16880-183.17064 F:
FTMS + p ESI Full ms
[100.00-1500.00] MS
Pbistriata_HDX

Pbistriata_HDX #168 RT: 1.10 AV: 1 NL: 2.64E8
T: FTMS + p ESI Full ms [100.00-1500.00]



Pbistriata_HDX #168 RT: 1.10 AV: 1 NL: 2.64E8
T: FTMS + p ESI Full ms [100.00-1500.00]

