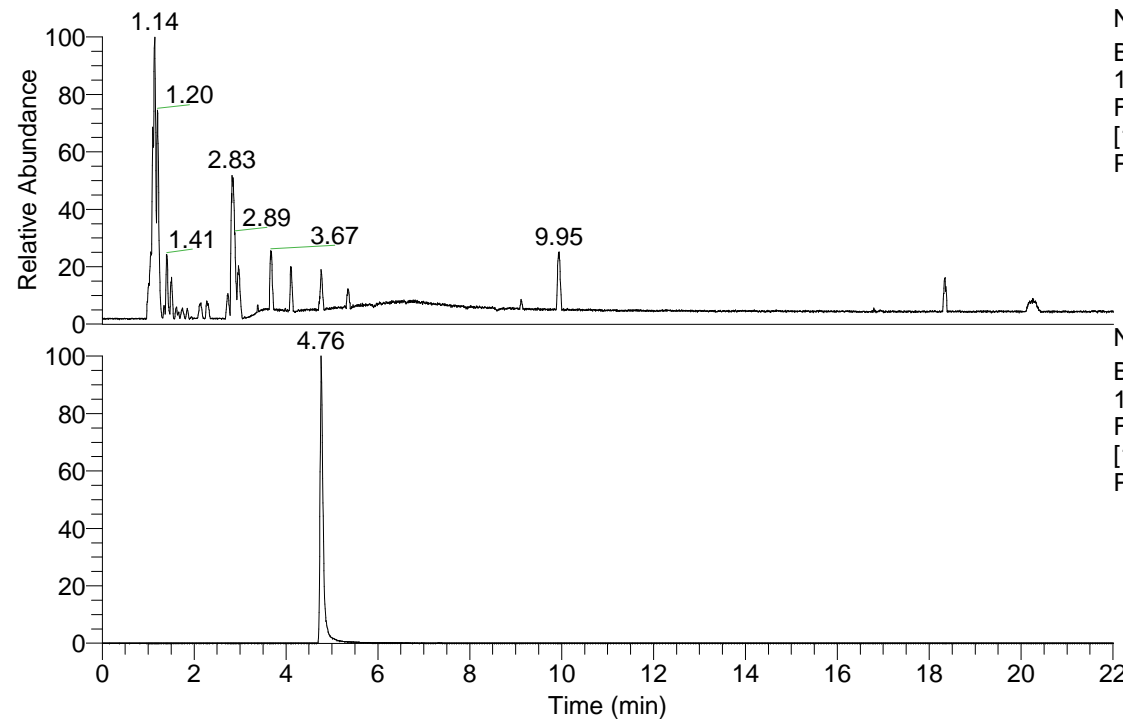


RT: 0.00 - 22.01



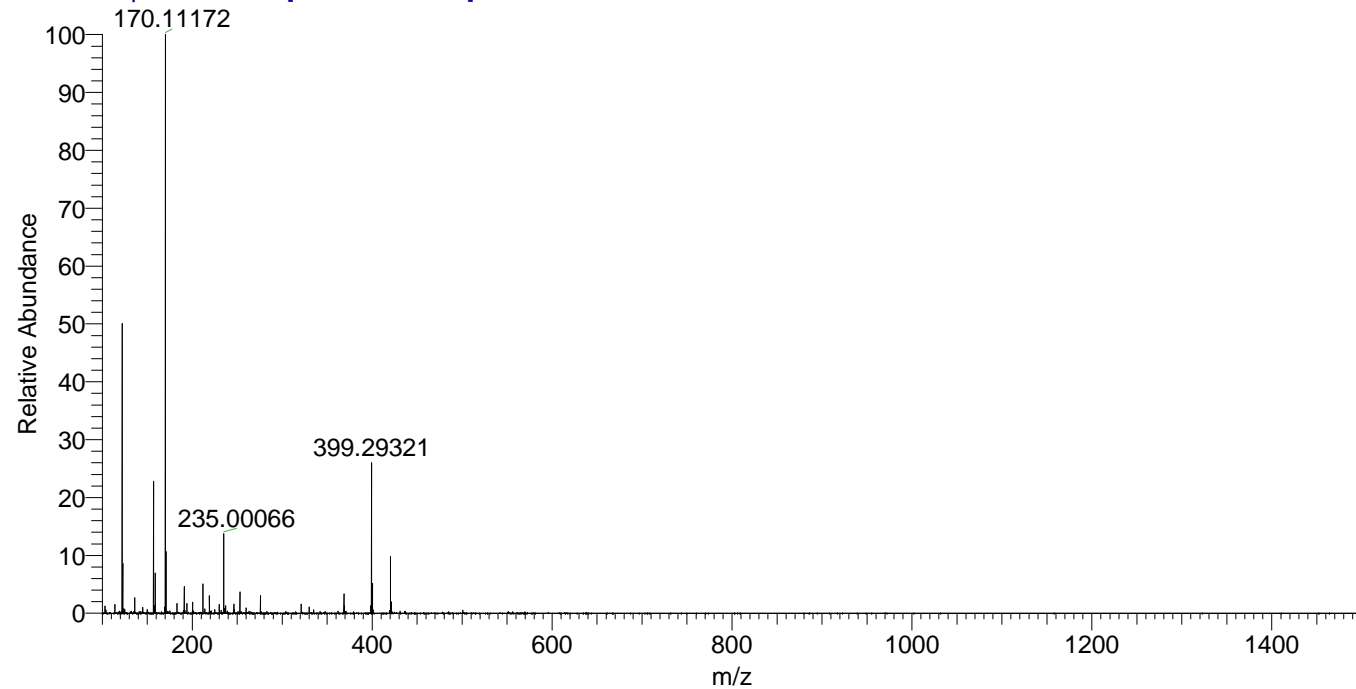
NL: 3.85E8
Base Peak m/z=
100.00000-1500.00000
F: FTMS + p ESI Full ms
[100.00-1500.00] MS
Pbistriata_HDX

NL: 7.30E7
Base Peak m/z=
170.11106-170.11276 F:
FTMS + p ESI Full ms
[100.00-1500.00] MS
Pbistriata_HDX

Pbistriata_HDX#774 RT: 4.76
T: FTMS + p ESI Full ms [100.00-1500.00]
m/z= 170.00000-171.00000

m/z	Intensity	Relative	Delta (ppm)	Composition
170.11176	66478972.0	100.00	0.39	C ₉ H ₈ ² H ₄ O ₂ N
			-1.16	C ₉ H ₁₀ ² H ₃ O ₂ N
			1.94	C ₉ H ₆ ² H ₅ O ₂ N
			-2.70	C ₉ H ₁₂ ² H ₂ O ₂ N
			3.49	C ₉ H ₄ ² H ₆ O ₂ N
			-4.25	C ₉ H ₁₄ ² H ₀ O ₂ N
			5.04	C ₉ H ₂ ² H ₇ O ₂ N
			-5.80	C ₉ H ₁₆ O ₂ N
			6.59	C ₉ ² H ₈ O ₂ N

Pbistriata_HDX #775 RT: 4.76 AV: 1 NL: 6.89E7
T: FTMS + p ESI Full ms [100.00-1500.00]



Pbistriata_HDX #774 RT: 4.76 AV: 1 NL: 6.29E7
T: FTMS + p ESI Full ms [100.00-1500.00]

