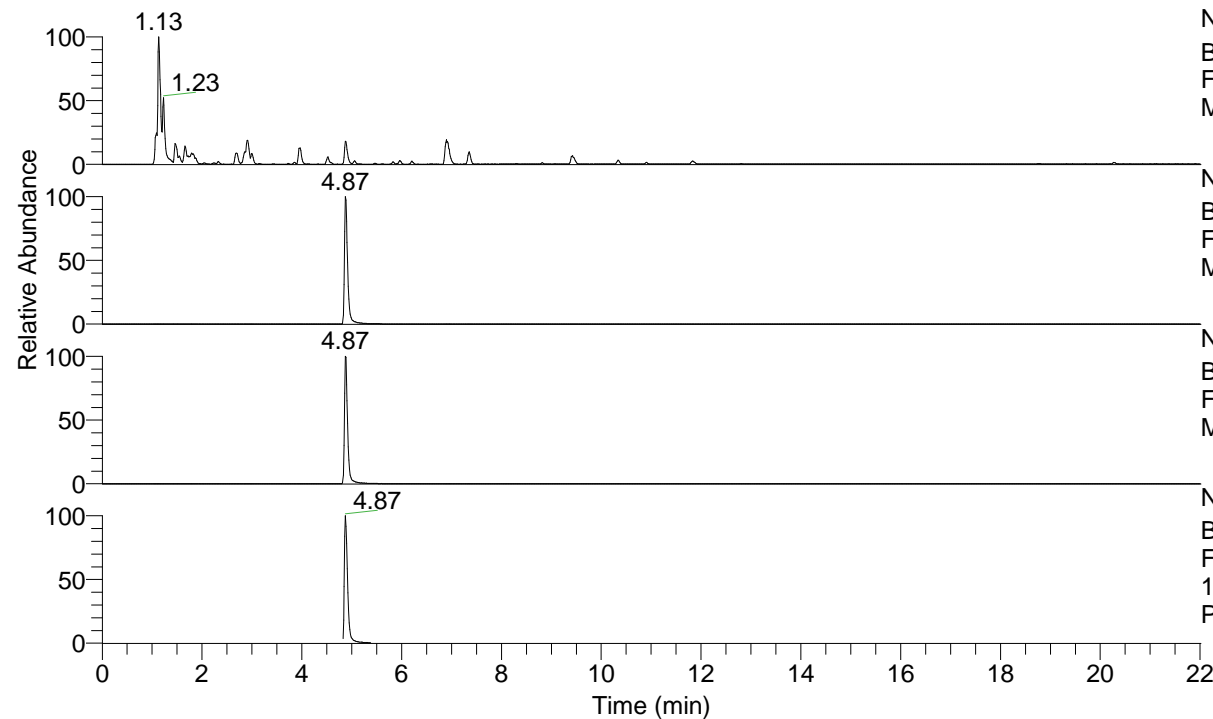


RT: 0.00 - 22.01



NL: 8.91E8  
 Base Peak m/z= 100.00000-1500.00000 F:  
 FTMS + p ESI Full ms [100.0000-1500.0000]  
 MS Pbistriata

NL: 1.63E8  
 Base Peak m/z= 166.08514-166.08846 F:  
 FTMS + p ESI Full ms [100.0000-1500.0000]  
 MS Pbistriata

NL: 9.50E7  
 Base Peak m/z= 120.08012-120.08252 F:  
 FTMS + p ESI Full ms [100.0000-1500.0000]  
 MS Pbistriata

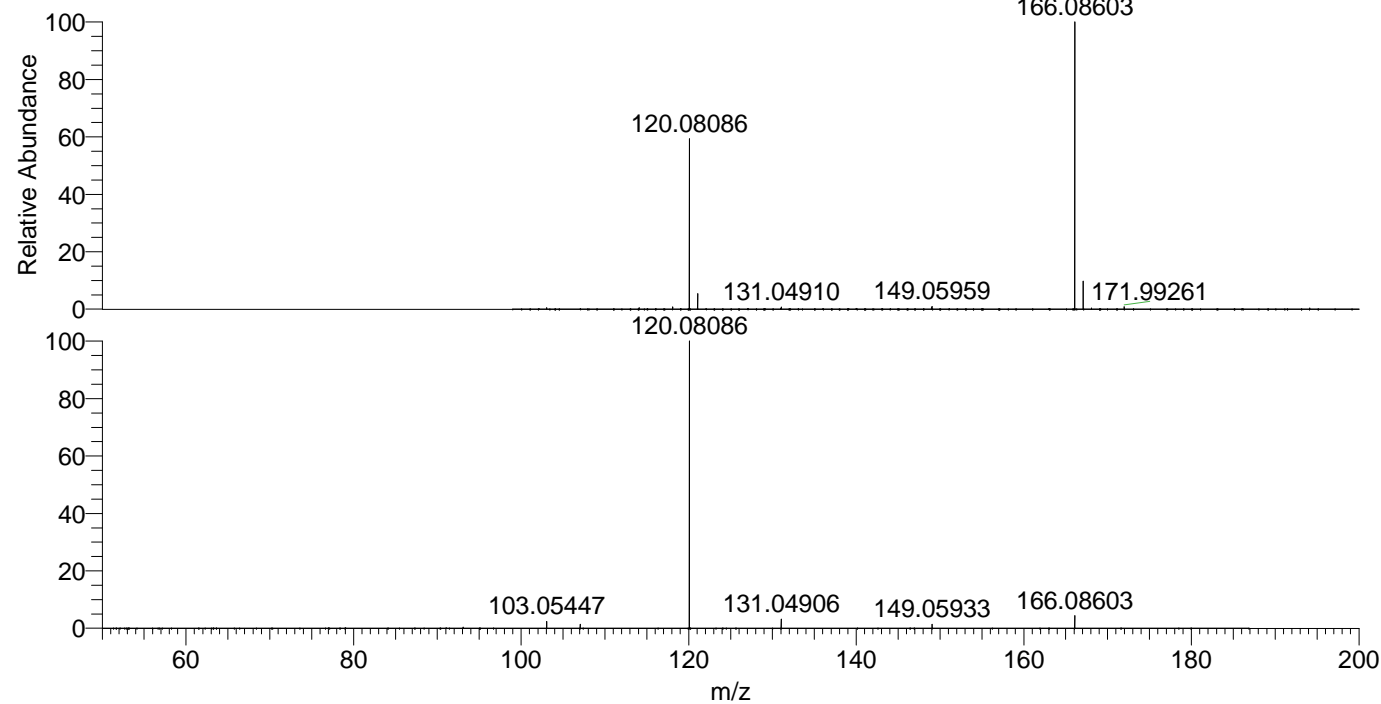
NL: 1.15E8  
 Base Peak m/z= 50.00000-1500.00000 F:  
 FTMS + p ESI d Full ms2  
 166.0860@hcd35.00 [50.0000-185.0000] MS  
 Pbistriata

Pbistriata#2056-2114 RT: 4.84-4.96 AV: 11

F: FTMS + p ESI d Full ms2 166.0900@ ...

m/z= 50.00000-1000.00000

m/z	Intensity	Relative
103.05446	1419529.0	2.47
107.04938	841225.0	1.46
120.08085	57580852.0	100.00
131.04906	1836849.6	3.19
149.05934	794268.2	1.38
166.08602	2527003.5	4.39



NL: 1.60E8  
 Pbistriata#2071 RT: 4.87  
 AV: 1 T: FTMS + p ESI Full  
 ms [100.0000-1500.0000]

NL: 6.18E7  
 Pbistriata#2053-2110 RT:  
 4.84-4.95 AV: 10 F: FTMS  
 + p ESI d Full ms2  
 166.0860@hcd35.00  
 [50.0000-185.0000]