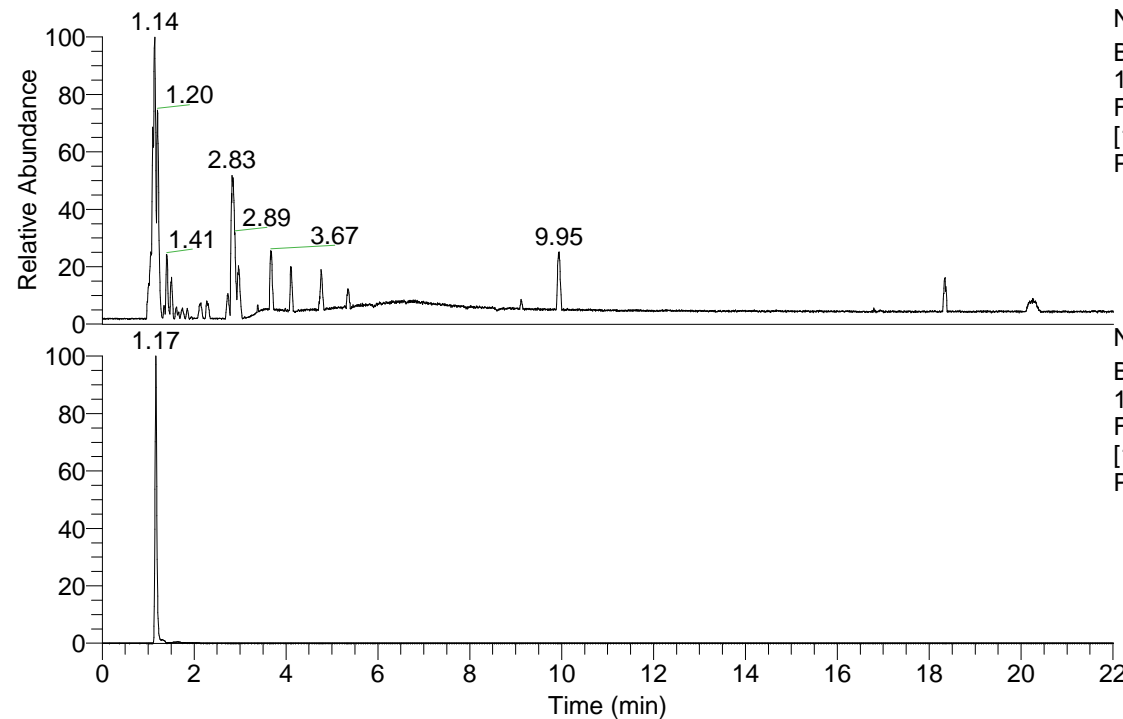


RT: 0.00 - 22.01



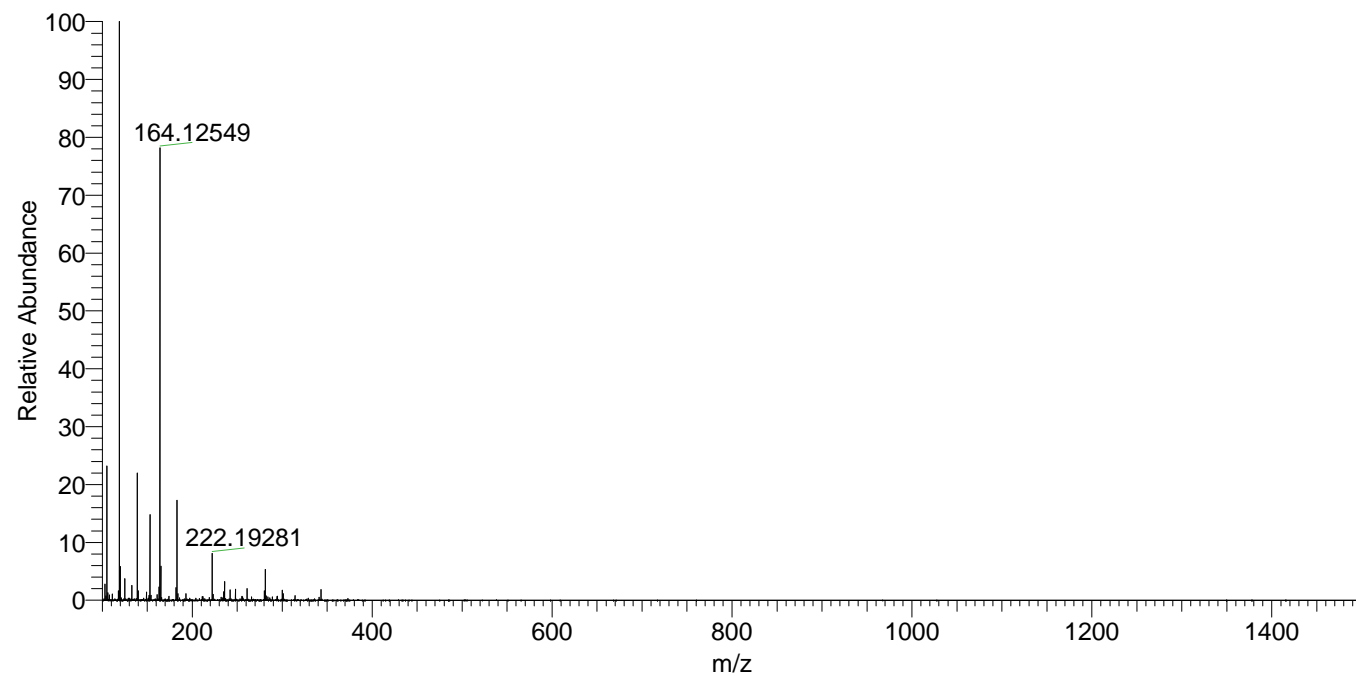
NL: 3.85E8
Base Peak m/z=
100.00000-1500.00000
F: FTMS + p ESI Full ms
[100.00-1500.00] MS
Pbistriata_HDX

Pbistriata_HDX#181 RT: 1.17
T: FTMS + p ESI Full ms [100.00-1500.00]
m/z= 164.00000-165.00000

m/z	Intensity	Relative	Delta (ppm)	Composition
164.12549	154726576.0	100.00	2.83	C ₇ H ₁₄ ² H ₂ O ₃ N
			-6.60	C ₇ H ₁₆ ² H ₂ O ₃ N

NL: 1.55E8
Base Peak m/z=
164.12475-164.12639 F:
FTMS + p ESI Full ms
[100.00-1500.00] MS
Pbistriata_HDX

Pbistriata_HDX #181 RT: 1.17 AV: 1 NL: 1.94E8
T: FTMS + p ESI Full ms [100.00-1500.00]



Pbistriata_HDX #181 RT: 1.17 AV: 1 NL: 1.52E8
T: FTMS + p ESI Full ms [100.00-1500.00]

