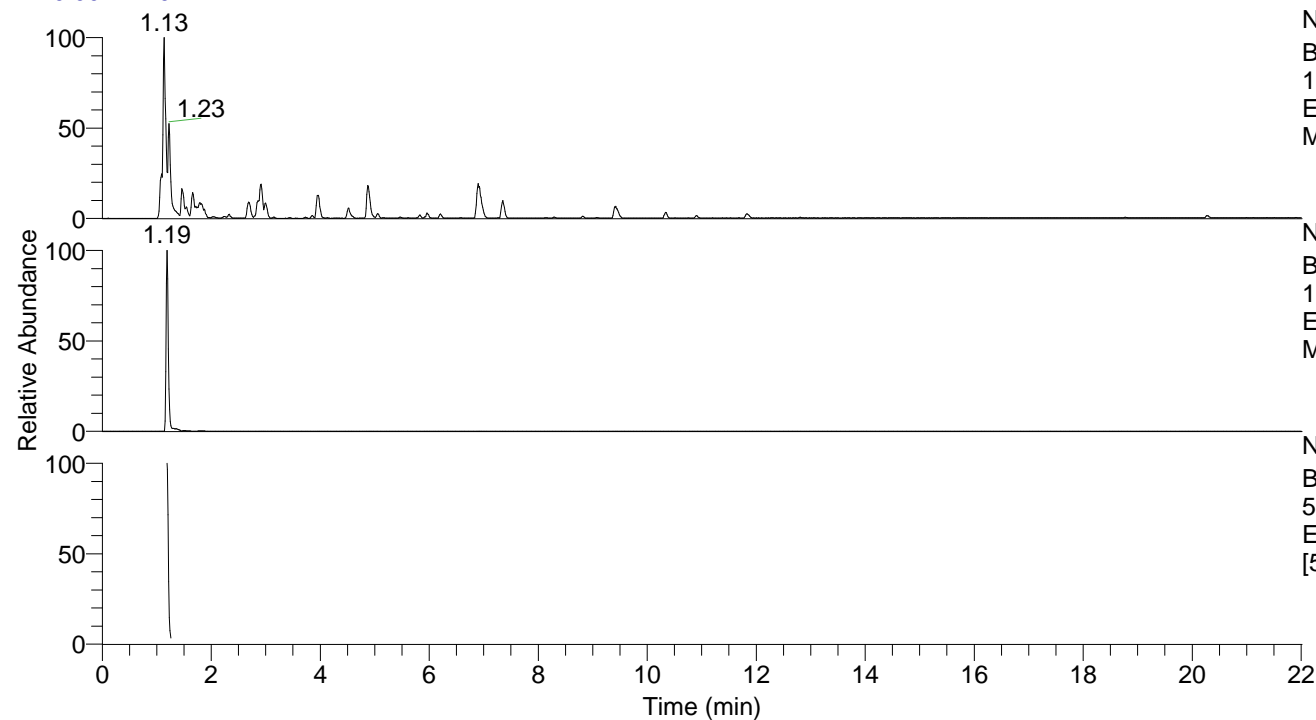


RT: 0.00 - 22.01



NL: 8.91E8

Base Peak m/z=

100.00000-1500.00000 F: FTMS + p

ESI Full ms [100.0000-1500.0000]

MS Pbistriata

NL: 2.29E8

Base Peak m/z=

162.11139-162.11463 F: FTMS + p

ESI Full ms [100.0000-1500.0000]

MS Pbistriata

NL: 5.64E7

Base Peak m/z=

50.00000-1500.00000 F: FTMS + p

ESI d Full ms2 162.1121@hcd35.00

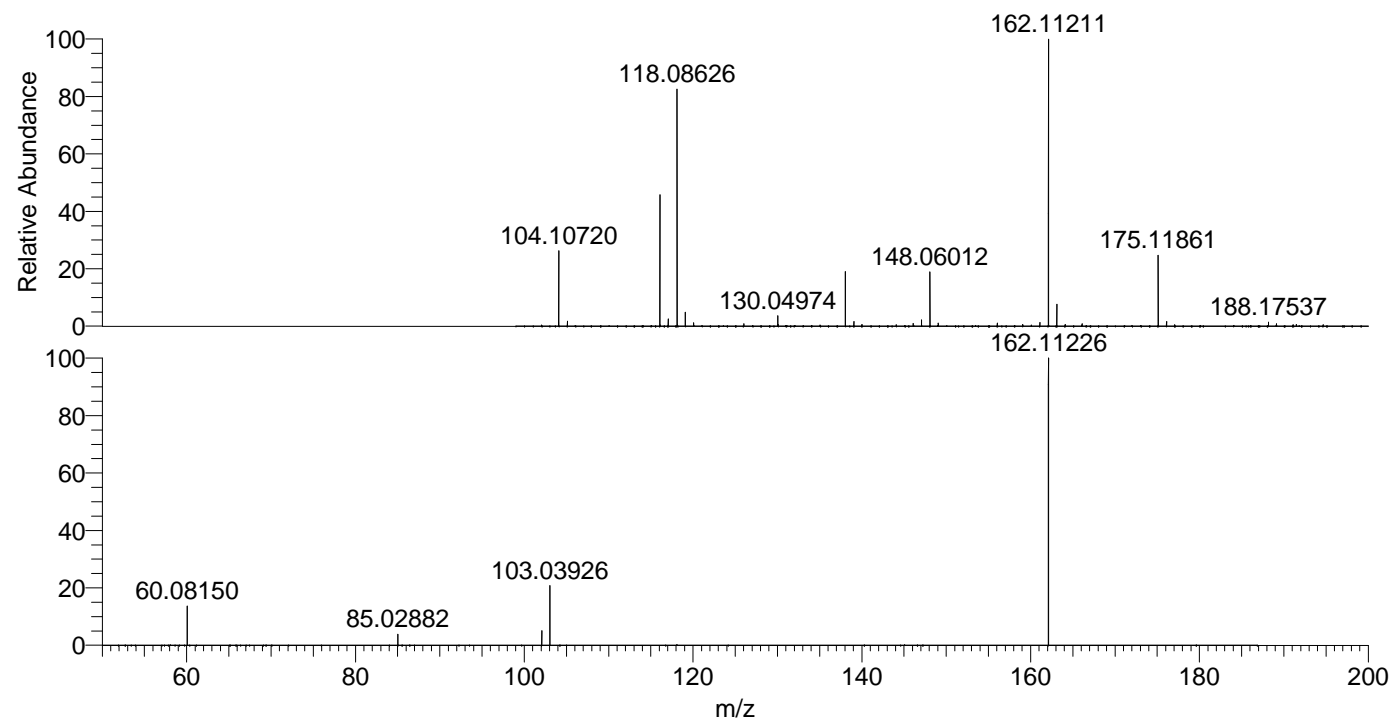
[50.0000-185.0000] MS Pbistriata

Pbistriata#490-514 RT: 1.19-1.23 AV: 5

F: FTMS + p ESI d Full ms2 162.1100@ ...

m/z= 50.00000-1000.00000

m/z	Intensity	Relative
60.08150	4546584.5	13.61
85.02882	1281498.9	3.83
102.09159	1687338.1	5.05
103.03926	6867811.5	20.55
162.11226	33416948.0	100.00



NL: 2.26E8

Pbistriata#493 RT: 1.19

AV: 1 T: FTMS + p ESI Full

ms [100.0000-1500.0000]

NL: 3.31E7

Pbistriata#481-514 RT:

1.19-1.23 AV: 5 F: FTMS +

p ESI d Full ms2

162.1121@hcd35.00

[50.0000-185.0000]