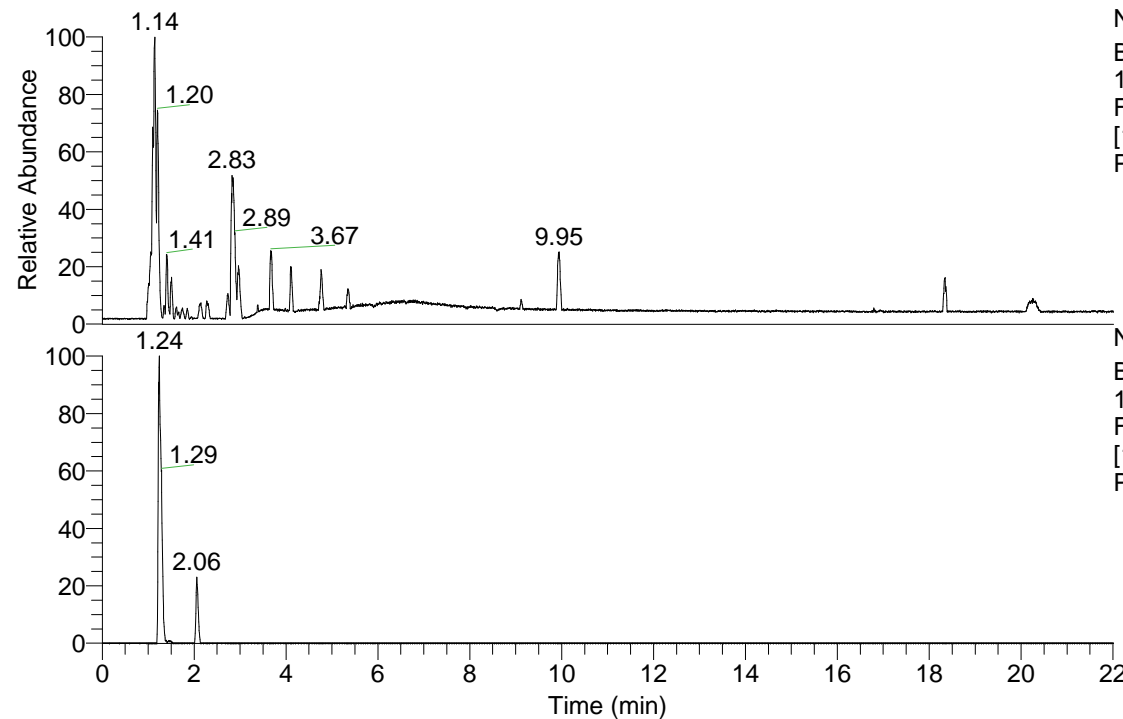


RT: 0.00 - 22.01



NL: 3.85E8
 Base Peak m/z=
 100.00000-1500.00000
 F: FTMS + p ESI Full ms
 [100.00-1500.00] MS
 Pbistriata_HDX

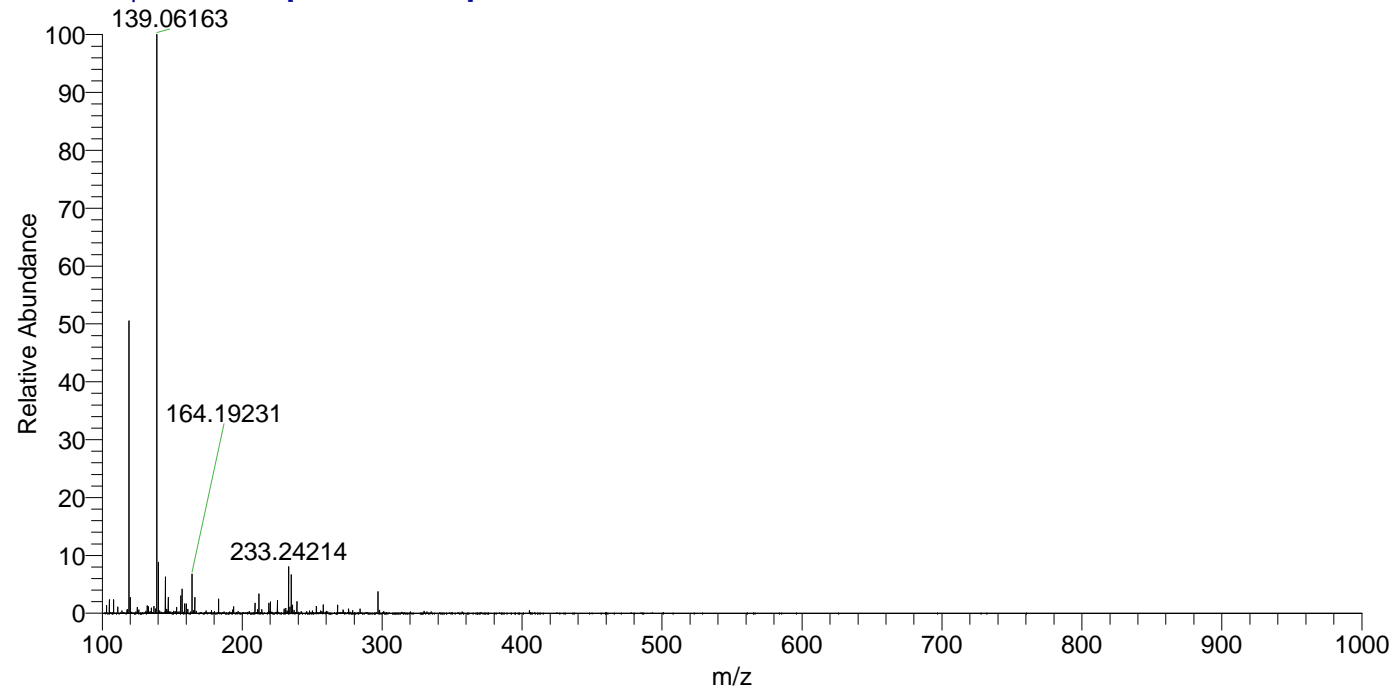
Pbistriata_HDX#194 RT: 1.24
 T: FTMS + p ESI Full ms [100.00-1500.00]
 m/z= 157.00000-158.00000

m/z	Intensity	Relative	Delta (ppm)	Composition
157.08853	4609325.0	100.00	2.94	C ₅ H ² H ₅ ON ₅

NL: 4.80E6
 Base Peak m/z=
 157.08783-157.08941 F:
 FTMS + p ESI Full ms
 [100.00-1500.00] MS
 Pbistriata_HDX

Pbistriata_HDX #194 RT: 1.24 AV: 1 NL: 1.05E8

T: FTMS + p ESI Full ms [100.00-1500.00]



Pbistriata_HDX #194 RT: 1.24 AV: 1 NL: 4.38E6

T: FTMS + p ESI Full ms [100.00-1500.00]

