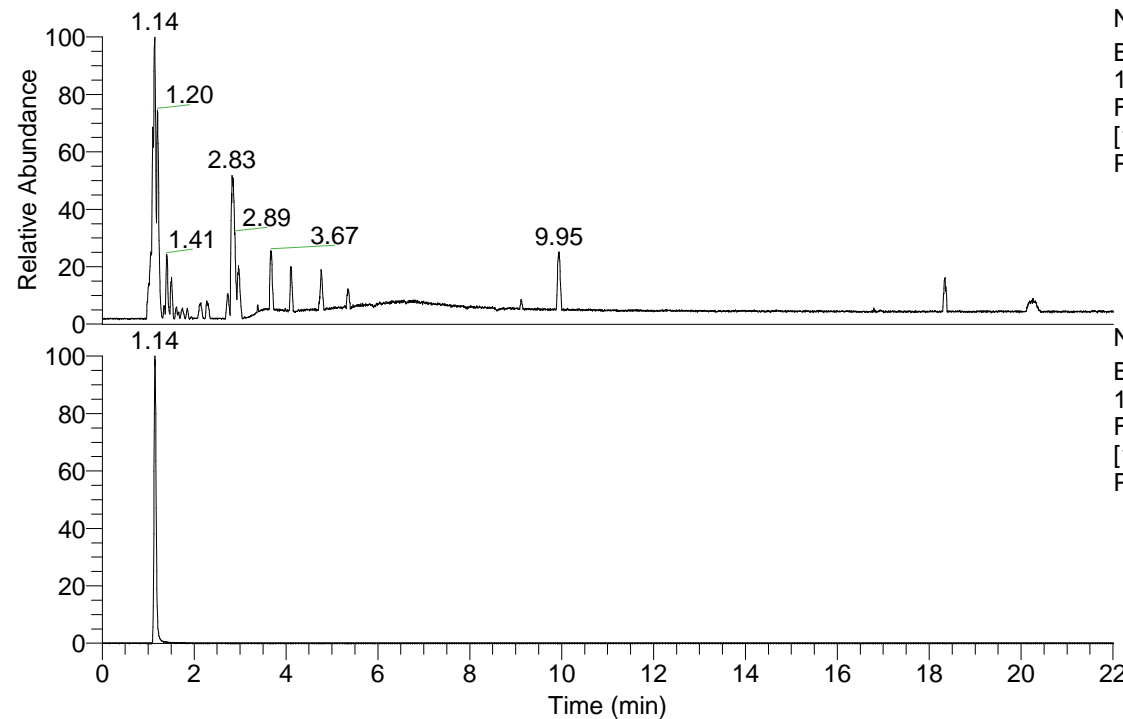


RT: 0.00 - 22.01



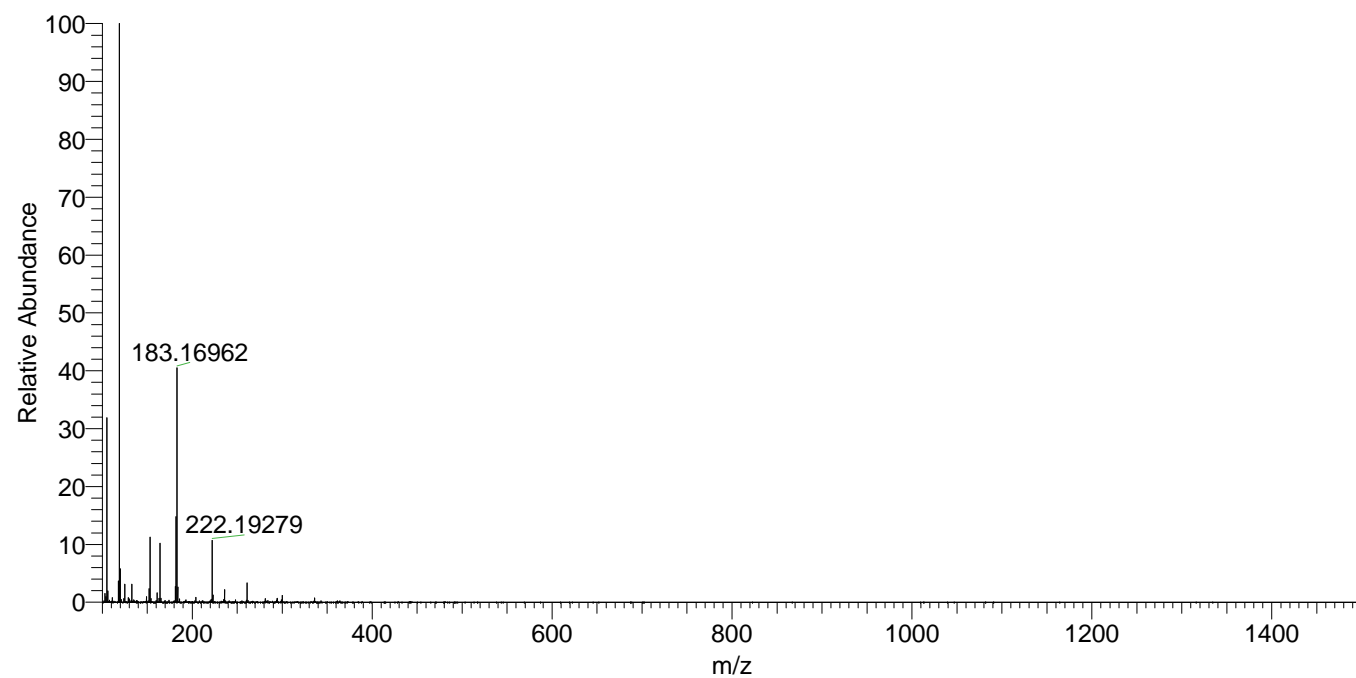
NL: 3.85E8
Base Peak m/z=
100.00000-1500.00000
F: FTMS + p ESI Full ms
[100.00-1500.00] MS
Pbistriata_HDX

NL: 4.76E7
Base Peak m/z=
153.09160-153.09314 F:
FTMS + p ESI Full ms
[100.00-1500.00] MS
Pbistriata_HDX

Pbistriata_HDX#175 RT: 1.14
T: FTMS + p ESI Full ms [100.00-1500.00]
m/z= 153.00000-154.00000

m/z	Intensity	Relative	Delta (ppm)	Composition
153.09224	42501732.0	100.00	0.42	C ₅ H ₅ ² H ₅ O ₄ N
			-1.13	C ₅ H ₇ ² H ₄ O ₄ N
			1.97	C ₅ H ₃ ² H ₆ O ₄ N
			-2.68	C ₅ H ₉ ² H ₃ O ₄ N
			3.52	C ₅ H ² H ₇ O ₄ N
			-4.22	C ₅ H ₁₁ ² H ₂ O ₄ N
			-5.77	C ₅ H ₁₃ ² H ₁ O ₄ N
			-7.32	C ₅ H ₁₅ O ₄ N

Pbistriata_HDX #175 RT: 1.14 AV: 1 NL: 3.59E8
T: FTMS + p ESI Full ms [100.00-1500.00]



Pbistriata_HDX #175 RT: 1.14 AV: 1 NL: 4.03E7
T: FTMS + p ESI Full ms [100.00-1500.00]

