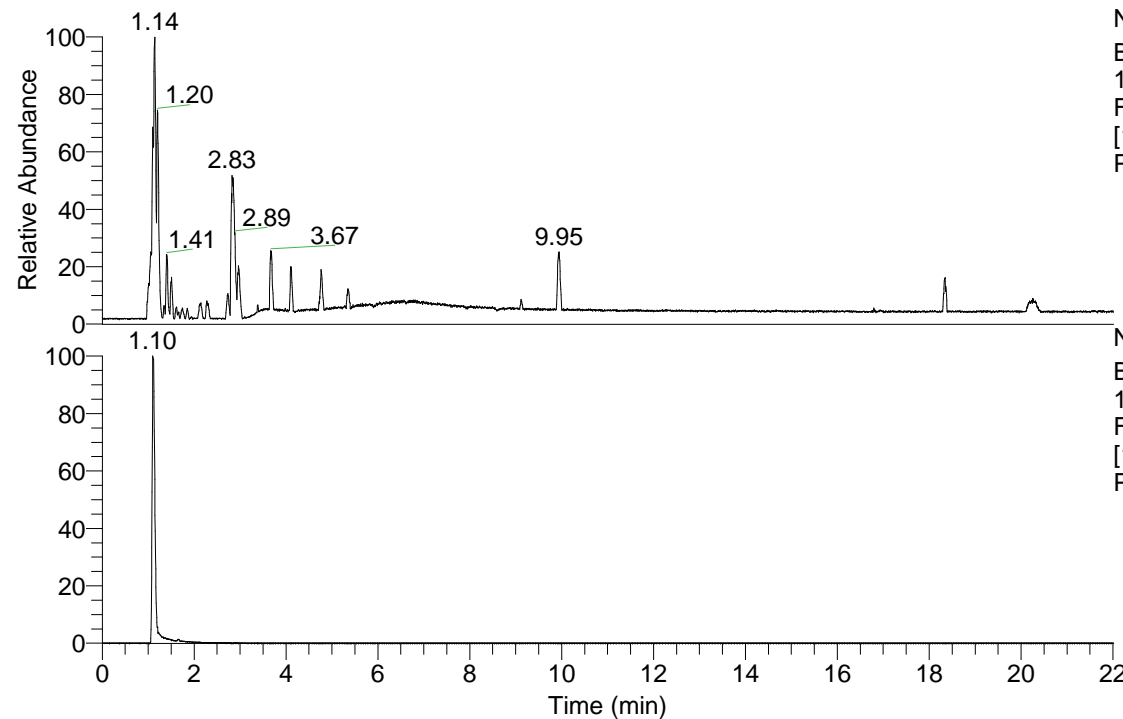


RT: 0.00 - 22.01



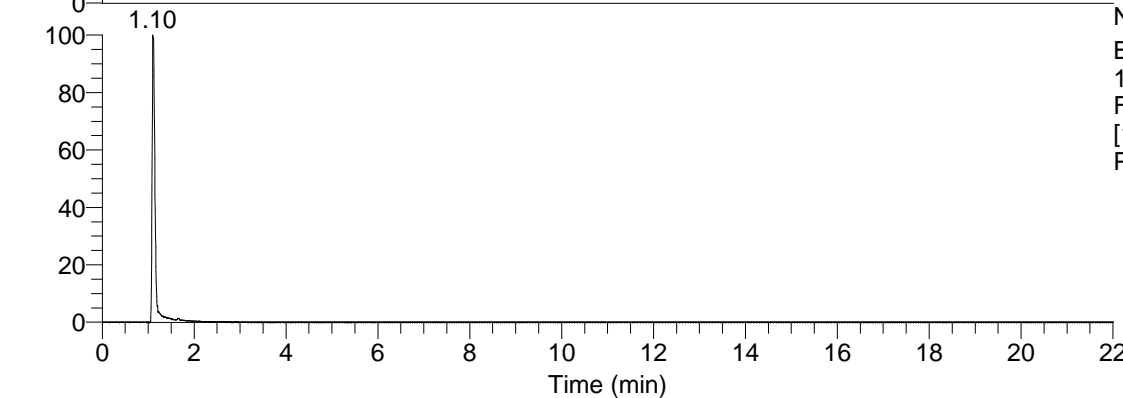
NL: 3.85E8
 Base Peak m/z=
 100.00000-1500.00000
 F: FTMS + p ESI Full ms
 [100.00-1500.00] MS
 Pbistriata_HDX

Pbistriata_HDX#168 RT: 1.10

T: FTMS + p ESI Full ms [100.00-1500.00]

m/z= 153.00000-154.00000

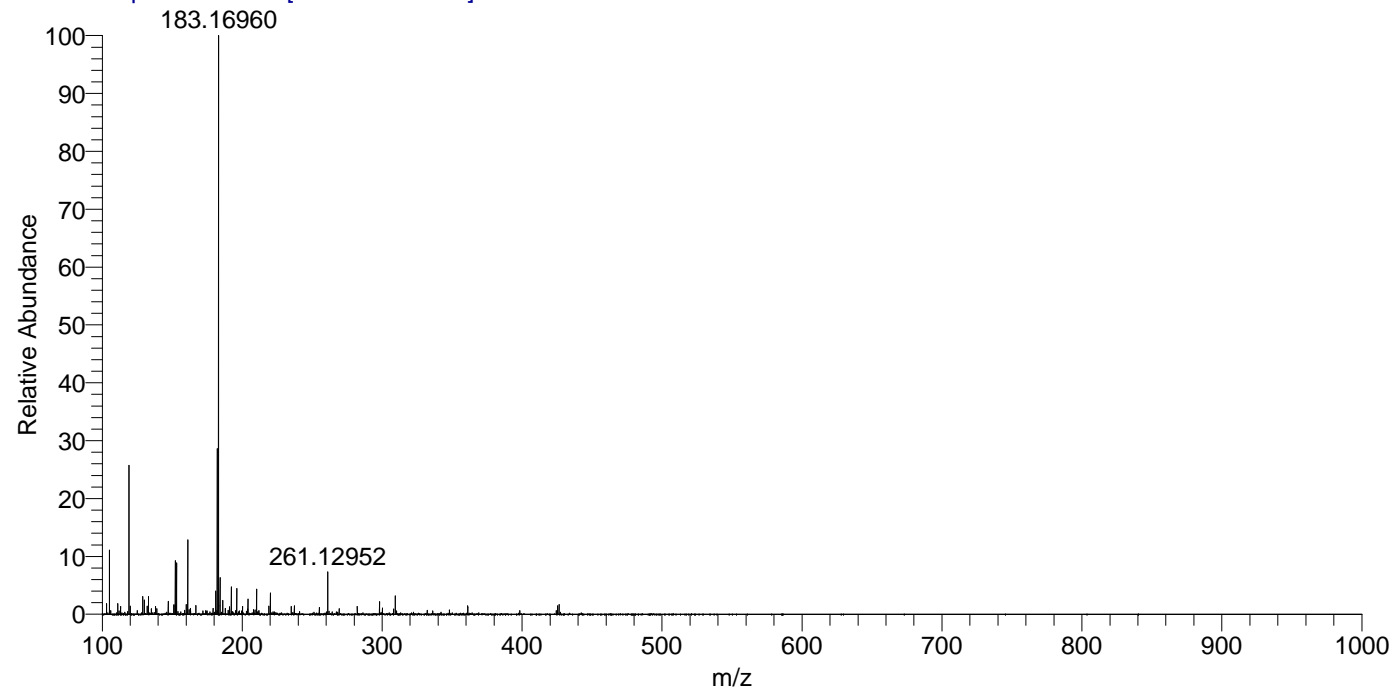
m/z	Intensity	Relative	Delta (ppm)	Composition
153.11450	23495452.0	100.00	2.76	C ₅ H ₅ ² H ₆ O ₃ N ₂



NL: 2.35E7
 Base Peak m/z=
 153.11386-153.11540 F:
 FTMS + p ESI Full ms
 [100.00-1500.00] MS
 Pbistriata_HDX

Pbistriata_HDX #168 RT: 1.10 AV: 1 NL: 2.64E8

T: FTMS + p ESI Full ms [100.00-1500.00]



Pbistriata_HDX #168 RT: 1.10 AV: 1 NL: 2.45E7

T: FTMS + p ESI Full ms [100.00-1500.00]

