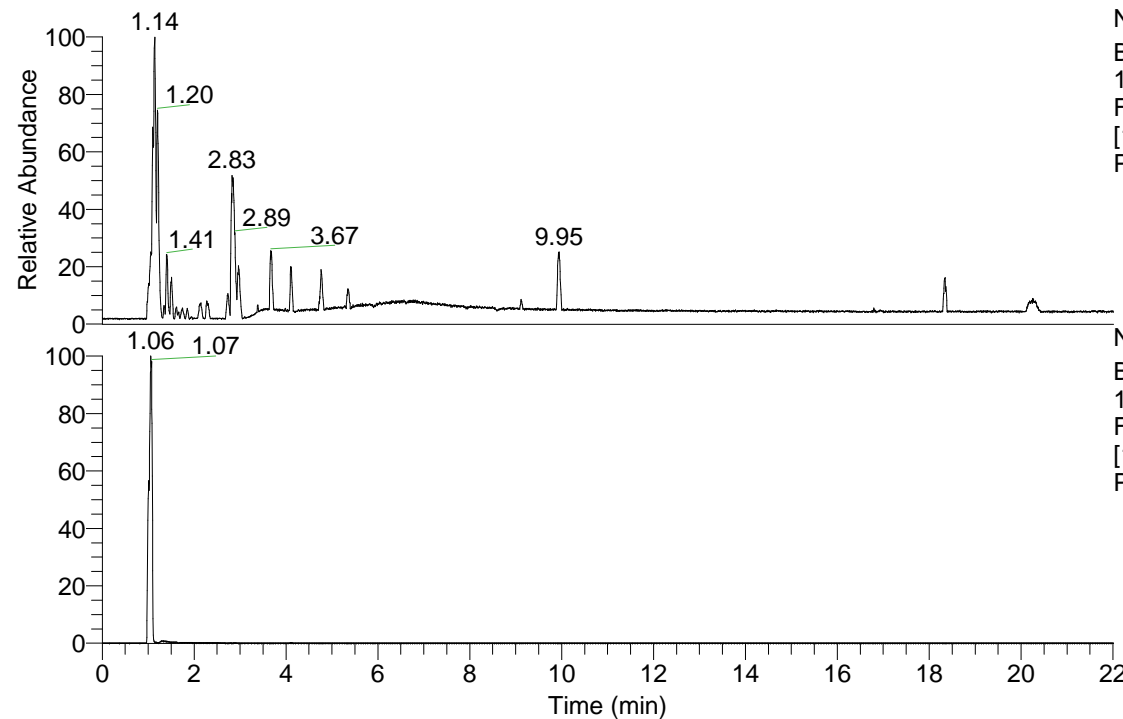


RT: 0.00 - 22.01



NL: 3.85E8
Base Peak m/z=
100.00000-1500.00000
F: FTMS + p ESI Full ms
[100.00-1500.00] MS
Pbistriata_HDX

Pbistriata_HDX#160 RT: 1.06

T: FTMS + p ESI Full ms [100.00-1500.00]

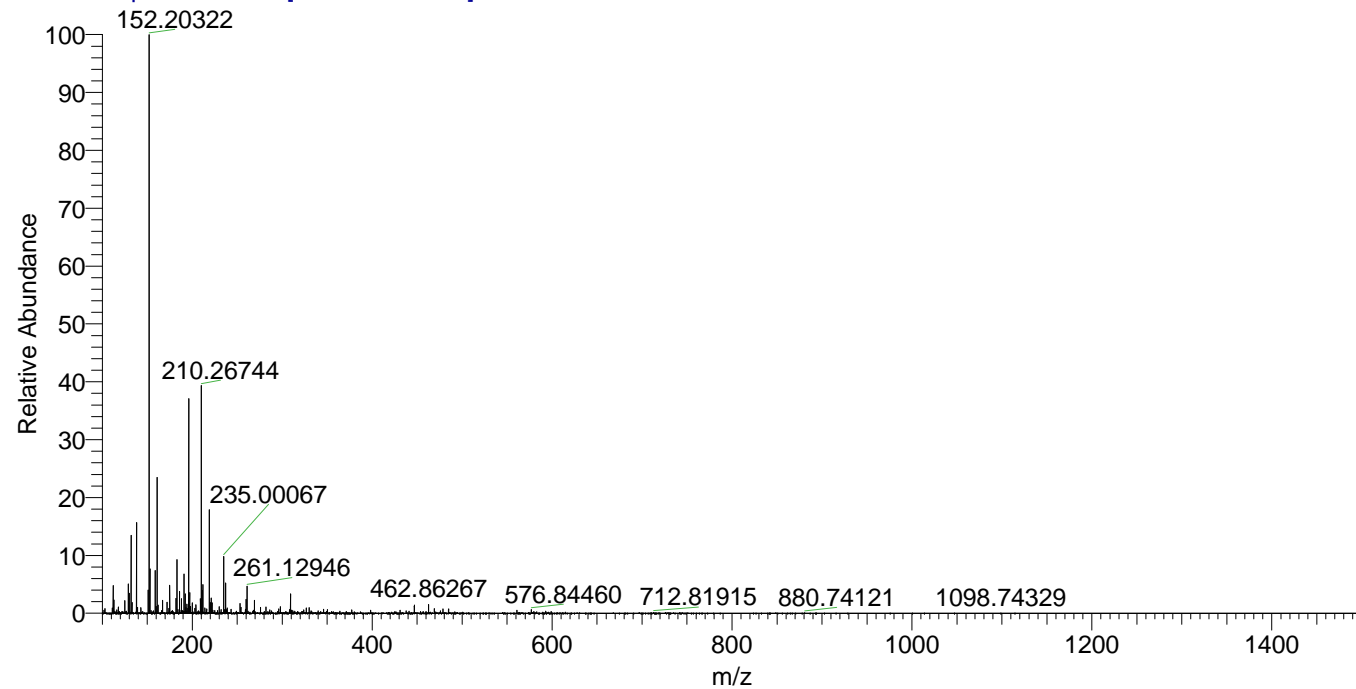
m/z= 152.00000-153.00000

m/z	Intensity	Relative	Delta (ppm)	Composition
152.20322	96684240.0	100.00	2.51	C ₇ H ₁₄ ² H ₆ N ₃
			-7.66	C ₇ H ₁₆ ² H ₅ N ₃

NL: 9.67E7
Base Peak m/z=
152.20262-152.20414 F:
FTMS + p ESI Full ms
[100.00-1500.00] MS
Pbistriata_HDX

Pbistriata_HDX #160 RT: 1.06 AV: 1 NL: 9.64E7

T: FTMS + p ESI Full ms [100.00-1500.00]



Pbistriata_HDX #160 RT: 1.06 AV: 1 NL: 9.64E7

T: FTMS + p ESI Full ms [100.00-1500.00]

