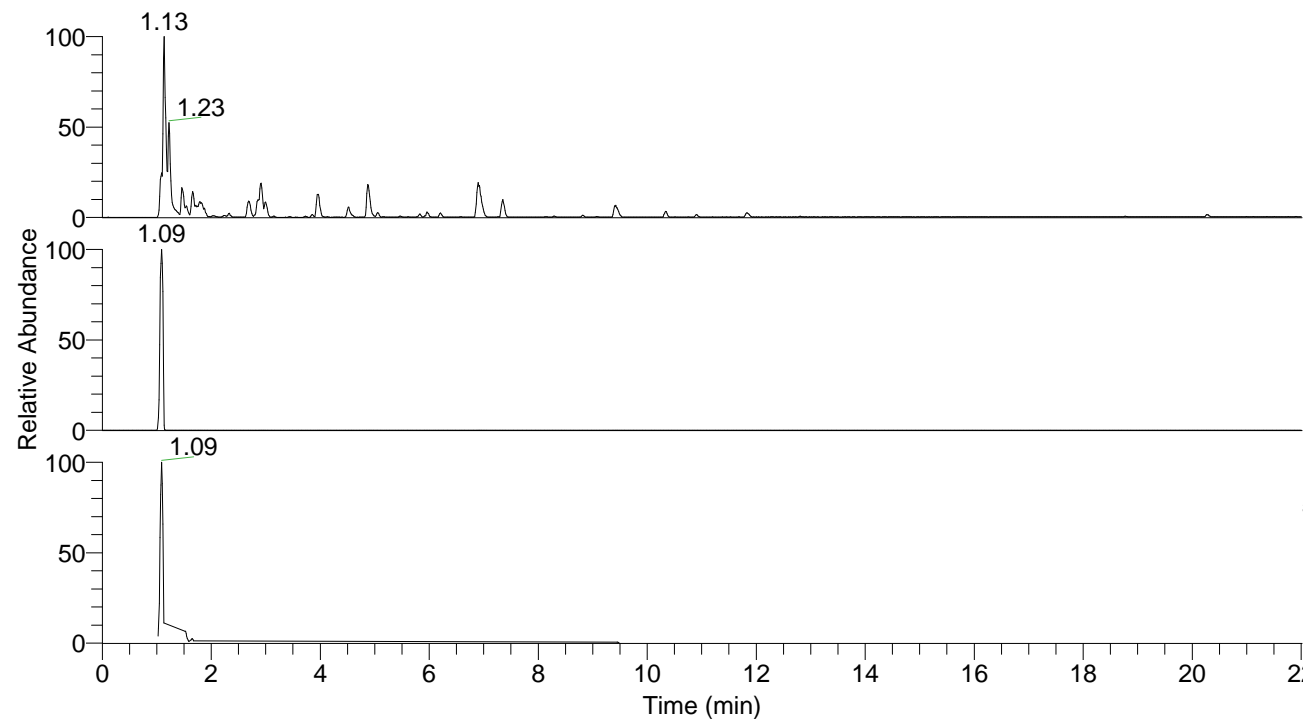


RT: 0.00 - 22.01



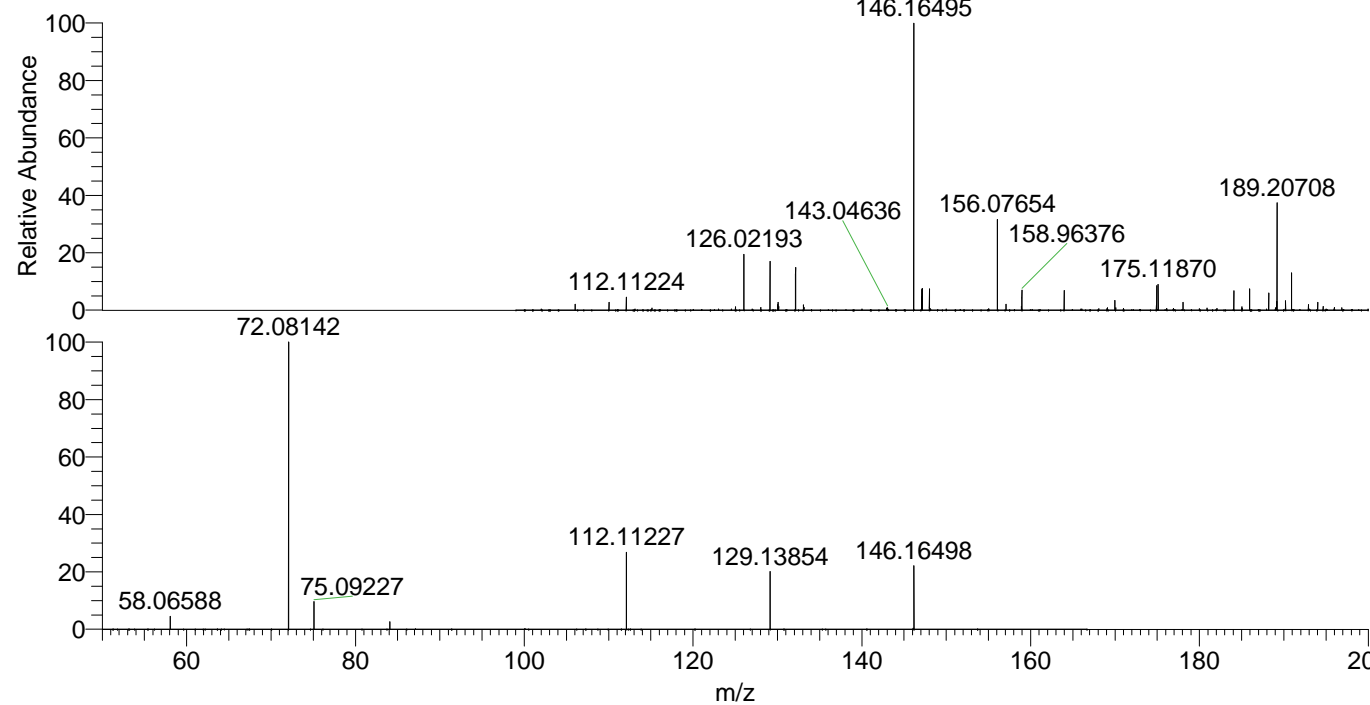
NL: 8.91E8  
 Base Peak m/z=  
 100.00000-1500.00000 F: FTMS + p  
 ESI Full ms [100.0000-1500.0000]  
 MS Pbistriata

NL: 2.20E8  
 Base Peak m/z=  
 146.16426-146.16718 F: FTMS + p  
 ESI Full ms [100.0000-1500.0000]  
 MS Pbistriata

NL: 7.66E7  
 Base Peak m/z=  
 50.00000-1500.00000 F: FTMS + p  
 ESI d Full ms2 146.0598@hcd35.00  
 [50.0000-165.0000] MS Pbistriata

Pbistriata#416-459 RT: 1.05-1.13 AV: 8  
 F: FTMS + p ESI d Full ms2 146.0600@ ...  
 m/z= 50.00000-1000.00000

m/z	Intensity	Relative
58.06588	2100438.0	4.40
72.08142	47764172.0	100.00
75.09227	4546554.5	9.52
84.08126	1286290.6	2.69
112.11227	12795941.0	26.79
129.13855	9715860.0	20.34
146.16498	10529919.0	22.05



NL: 2.15E8  
 Pbistriata#439 RT: 1.09  
 AV: 1 T: FTMS + p ESI Full  
 ms [100.0000-1500.0000]

NL: 5.10E7  
 Pbistriata#419-461 RT:  
 1.06-1.13 AV: 7 F: FTMS +  
 p ESI d Full ms2  
 146.0598@hcd35.00  
 [50.0000-165.0000]