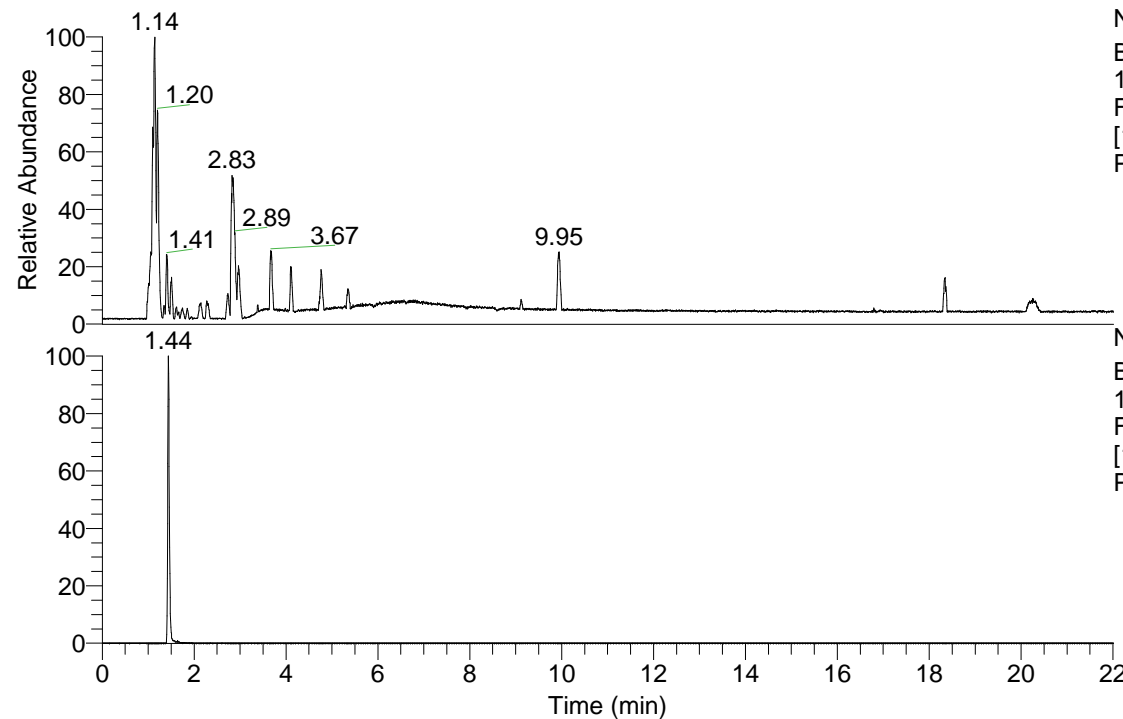


RT: 0.00 - 22.01



NL: 3.85E8  
 Base Peak m/z=  
 100.00000-1500.00000  
 F: FTMS + p ESI Full ms  
 [100.00-1500.00] MS  
 Pbistriata\_HDX

Pbistriata\_HDX#229 RT: 1.44

T: FTMS + p ESI Full ms [100.00-1500.00]

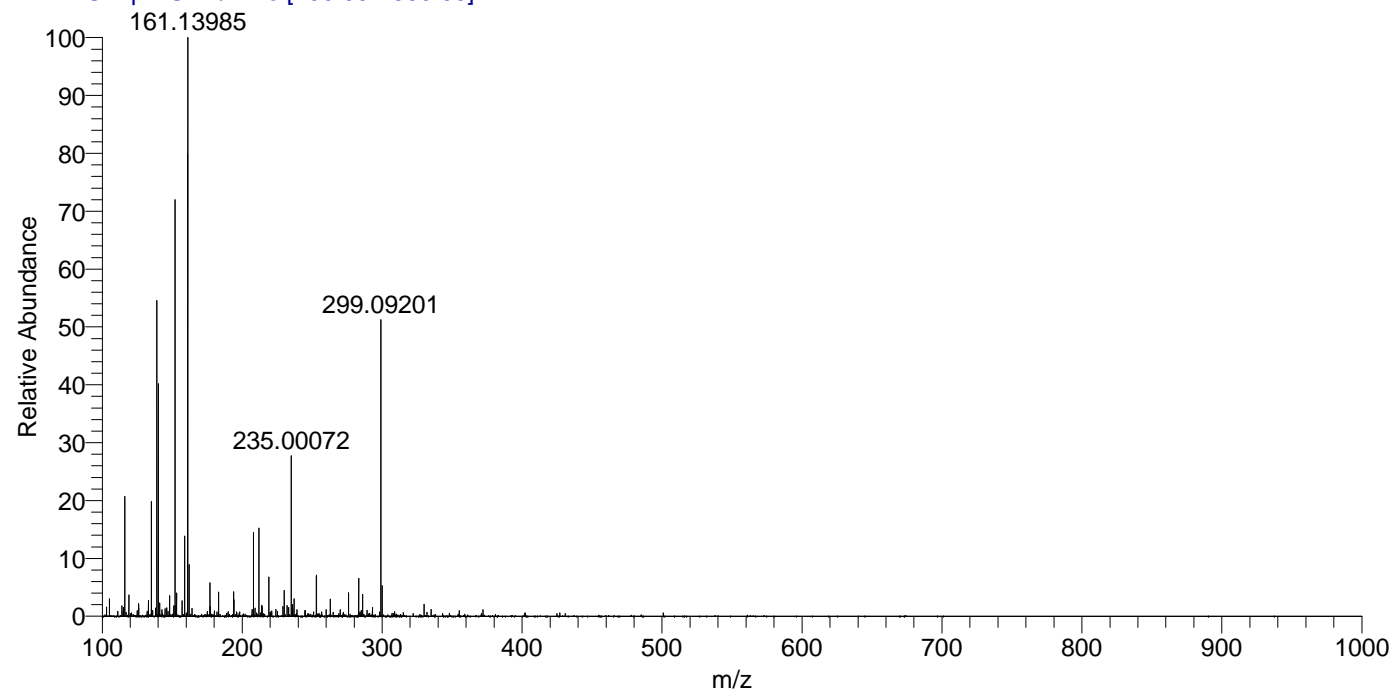
m/z= 152.00000-153.00000

m/z	Intensity	Relative	Delta (ppm)	Composition
152.13049	20099934.0	100.00	2.82	C <sub>5</sub> H <sub>6</sub> <sup>2</sup> H <sub>6</sub> O <sub>2</sub> N <sub>3</sub>

NL: 2.01E7  
 Base Peak m/z=  
 152.12985-152.13137 F:  
 FTMS + p ESI Full ms  
 [100.00-1500.00] MS  
 Pbistriata\_HDX

Pbistriata\_HDX #229 RT: 1.44 AV: 1 NL: 2.64E7

T: FTMS + p ESI Full ms [100.00-1500.00]



Pbistriata\_HDX #229 RT: 1.44 AV: 1 NL: 1.90E7

T: FTMS + p ESI Full ms [100.00-1500.00]

