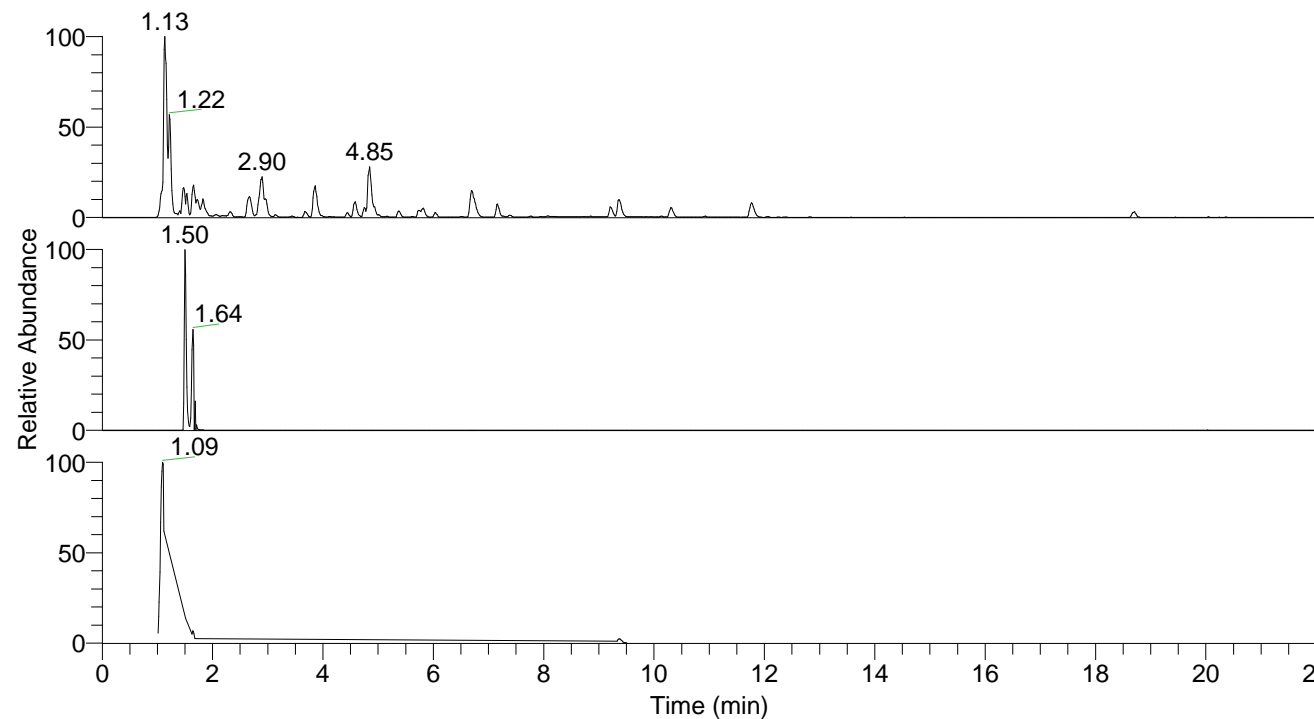


RT: 0.00 - 22.01



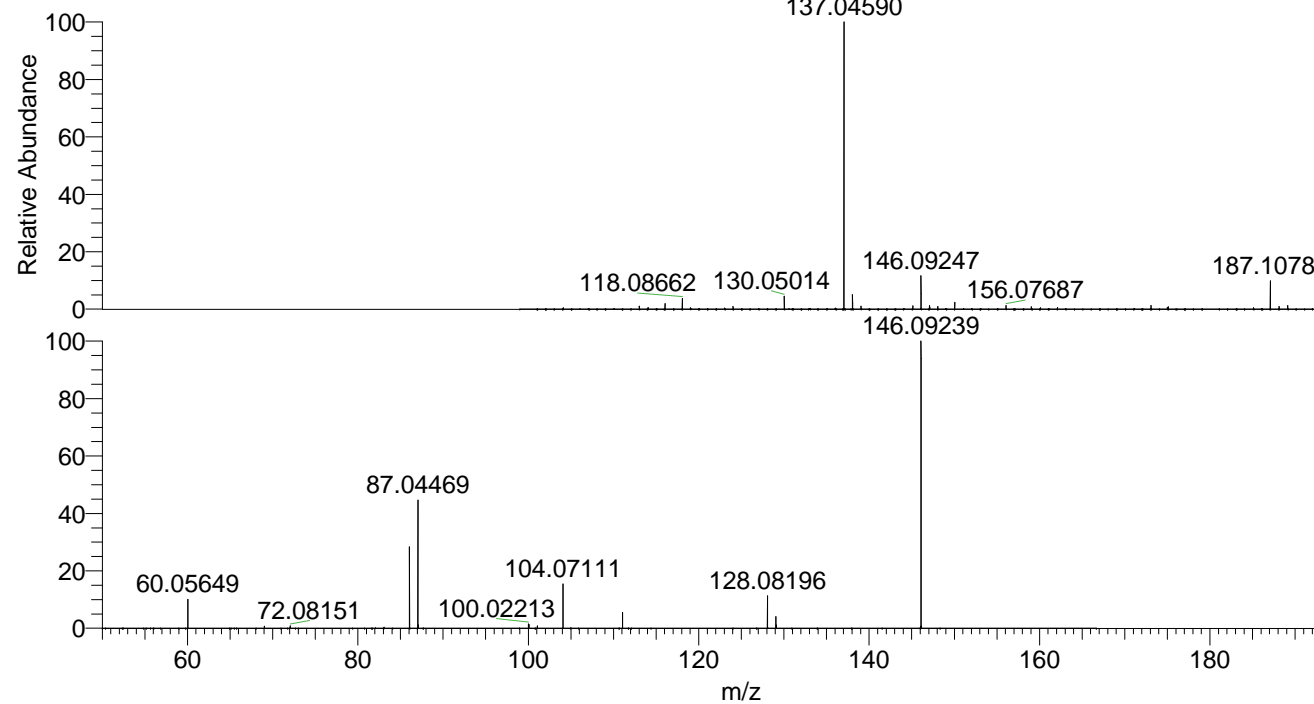
NL: 4.34E8  
 Base Peak m/z=  
 100.00000-1500.00000 F: FTMS +  
 p ESI Full ms [100.00-1500.00] MS  
 Pbistriata20

NL: 1.53E7  
 Base Peak m/z=  
 146.09222-146.09368 F: FTMS + p  
 ESI Full ms [100.00-1500.00] MS  
 Pbistriata20

NL: 4.37E7  
 Base Peak m/z=  
 50.00000-1500.00000 F: FTMS + p  
 ESI d Full ms2 146.06@hcd35.00  
 [50.00-165.00] MS Pbistriata20

Pbistriata20#695-720 RT: 1.63-1.68 AV: 5  
 F: FTMS + p ESI d Full ms2 146.06@h ...  
 m/z= 50.00000-1000.00000

m/z	Intensity	Relative
60.05649	220829.5	10.23
69.03435	16331.0	0.76
72.08151	17817.9	0.83
86.06072	601063.8	27.85
86.09698	11951.5	0.55
87.04469	950191.9	44.03
87.10034	25249.1	1.17
100.02213	33104.0	1.53
100.07623	29133.2	1.35
101.06020	18175.4	0.84
104.07111	327644.7	15.18
111.05566	116819.0	5.41
128.08196	240680.3	11.15
129.06603	88433.4	4.10
129.11064	26081.2	1.21
146.02712	16759.3	0.78
146.09239	2158286.3	100.00
146.13692	14956.7	0.69



NL: 7.31E7  
 Pbistriata20#703 RT: 1.64  
 AV: 1 T: FTMS + p ESI  
 Full lock ms  
 [100.00-1500.00]

NL: 2.12E6  
 Pbistriata20#692-720 RT:  
 1.63-1.68 AV: 5 F: FTMS  
 + p ESI d Full ms2  
 146.06@hcd35.00  
 [50.00-165.00]