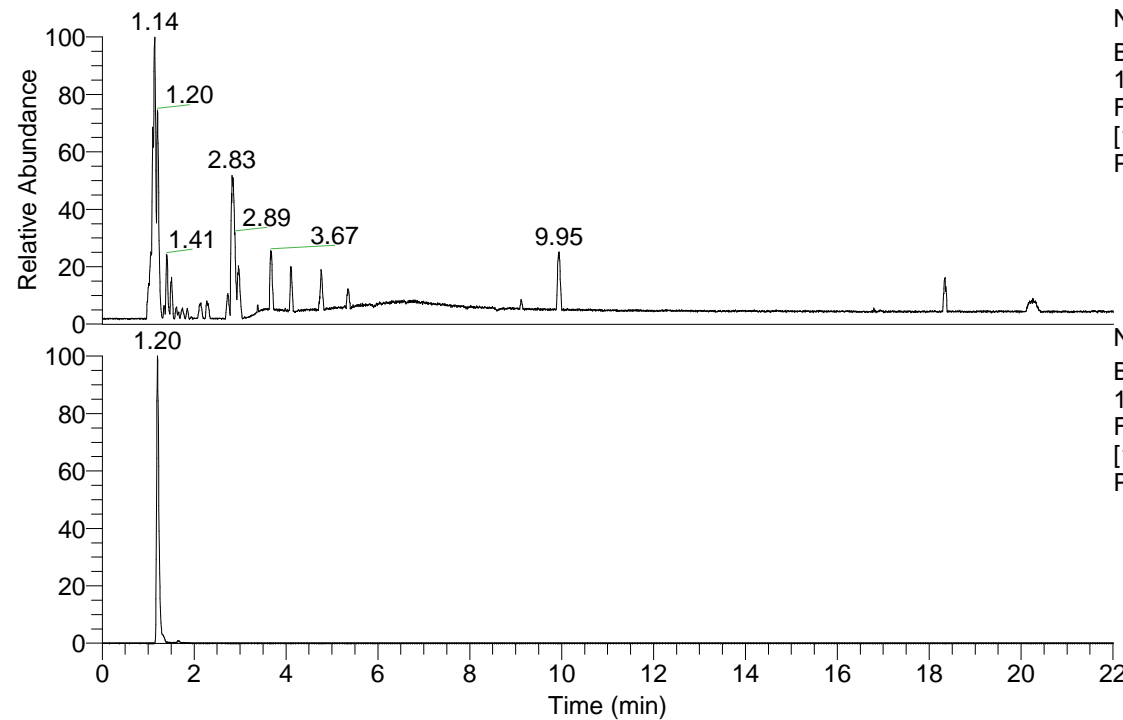


RT: 0.00 - 22.01



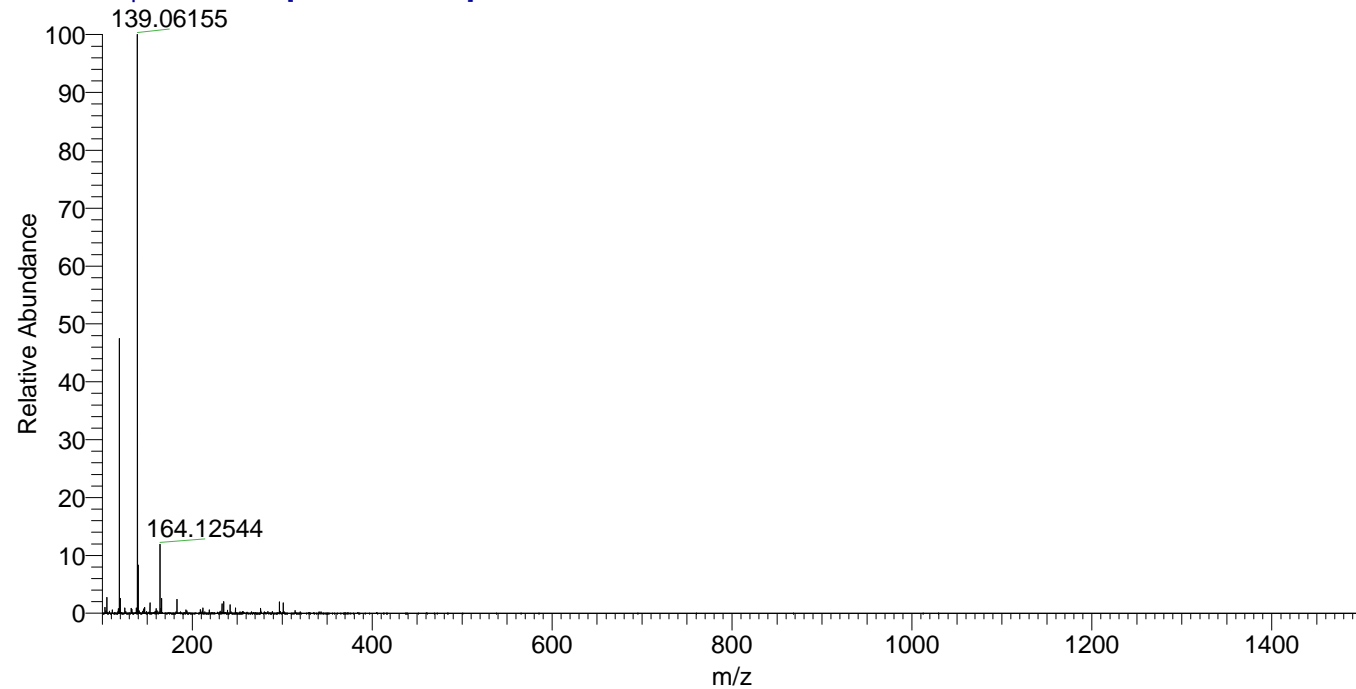
NL: 3.85E8
Base Peak m/z=
100.00000-1500.00000
F: FTMS + p ESI Full ms
[100.00-1500.00] MS
Pbistriata_HDX

Pbistriata_HDX#187 RT: 1.20
T: FTMS + p ESI Full ms [100.00-1500.00]
m/z= 139.00000-140.00000

m/z	Intensity	Relative	Delta (ppm)	Composition
139.06155	286392832.0	100.00	2.32	C ₇ H ₇ ² H O ₂ N
			-8.82	C ₇ H ₉ O ₂ N

NL: 2.86E8
Base Peak m/z=
139.06108-139.06248 F:
FTMS + p ESI Full ms
[100.00-1500.00] MS
Pbistriata_HDX

Pbistriata_HDX #187 RT: 1.20 AV: 1 NL: 2.77E8
T: FTMS + p ESI Full ms [100.00-1500.00]



Pbistriata_HDX #187 RT: 1.20 AV: 1 NL: 2.77E8
T: FTMS + p ESI Full ms [100.00-1500.00]

