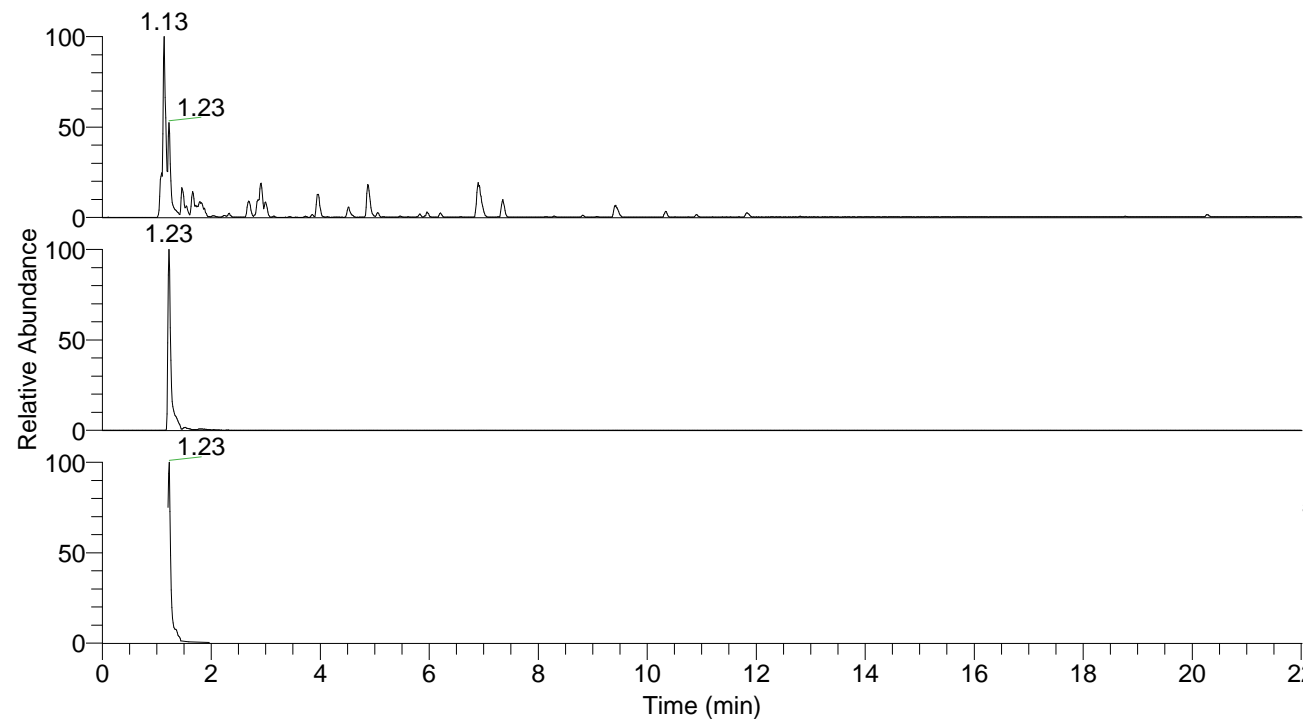


RT: 0.00 - 22.01



NL: 8.91E8
 Base Peak m/z=
 100.00000-1500.00000 F: FTMS + p
 ESI Full ms [100.0000-1500.0000]
 MS Pbistriata

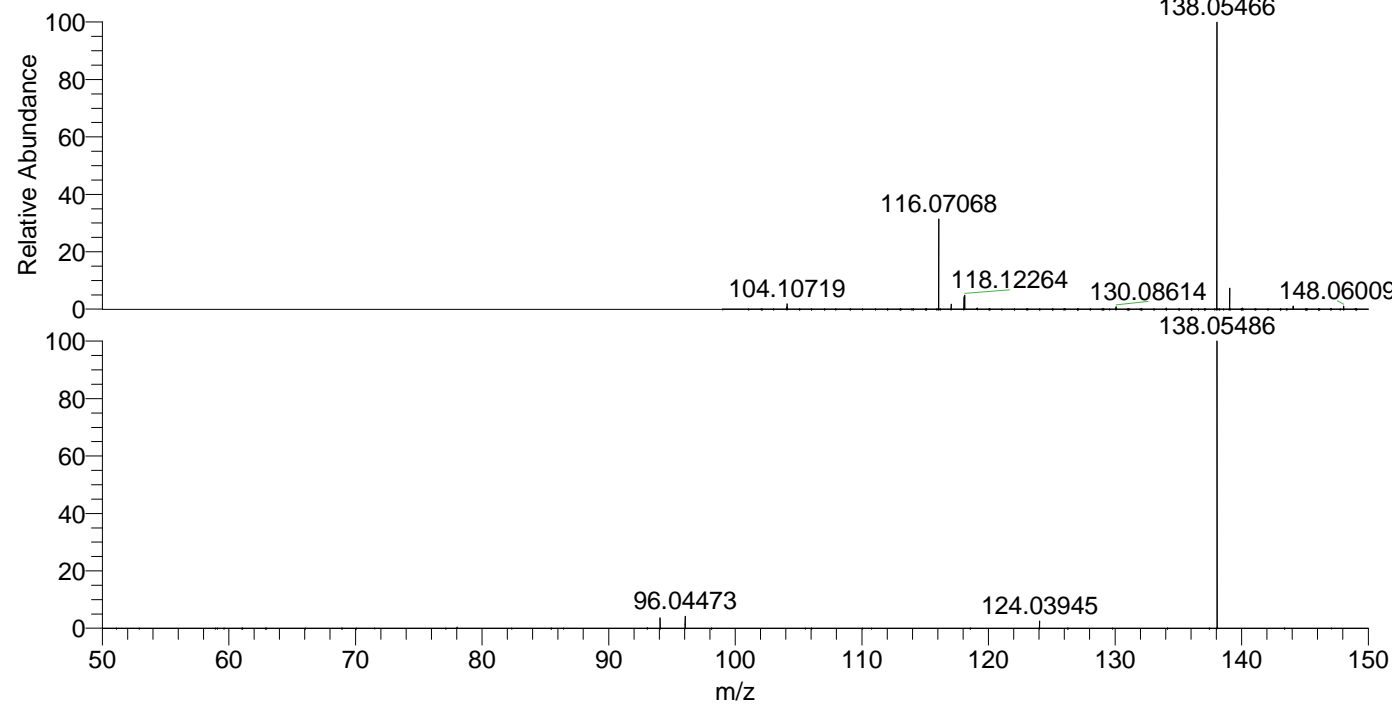
Pbistriata#502-524 RT: 1.21-1.25 AV: 5

F: FTMS + p ESI d Full ms2 138.0500@ ...

m/z	Intensity	Relative
94.06547	4974801.0	3.57
96.04473	6103220.0	4.38
124.03945	3456141.8	2.48
138.05486	139210752.0	100.00

NL: 4.67E8
 Base Peak m/z=
 138.05412-138.05688 F: FTMS + p
 ESI Full ms [100.0000-1500.0000]
 MS Pbistriata

NL: 1.88E8
 Base Peak m/z=
 50.00000-1500.00000 F: FTMS + p
 ESI d Full ms2 138.0547@hcd35.00
 [50.0000-160.0000] MS Pbistriata



NL: 4.67E8
 Pbistriata#511 RT: 1.23
 AV: 1 T: FTMS + p ESI Full
 ms [100.0000-1500.0000]

NL: 1.39E8
 Pbistriata#500-529 RT:
 1.21-1.25 AV: 5 F: FTMS +
 p ESI d Full ms2
 138.0547@hcd35.00
 [50.0000-160.0000]