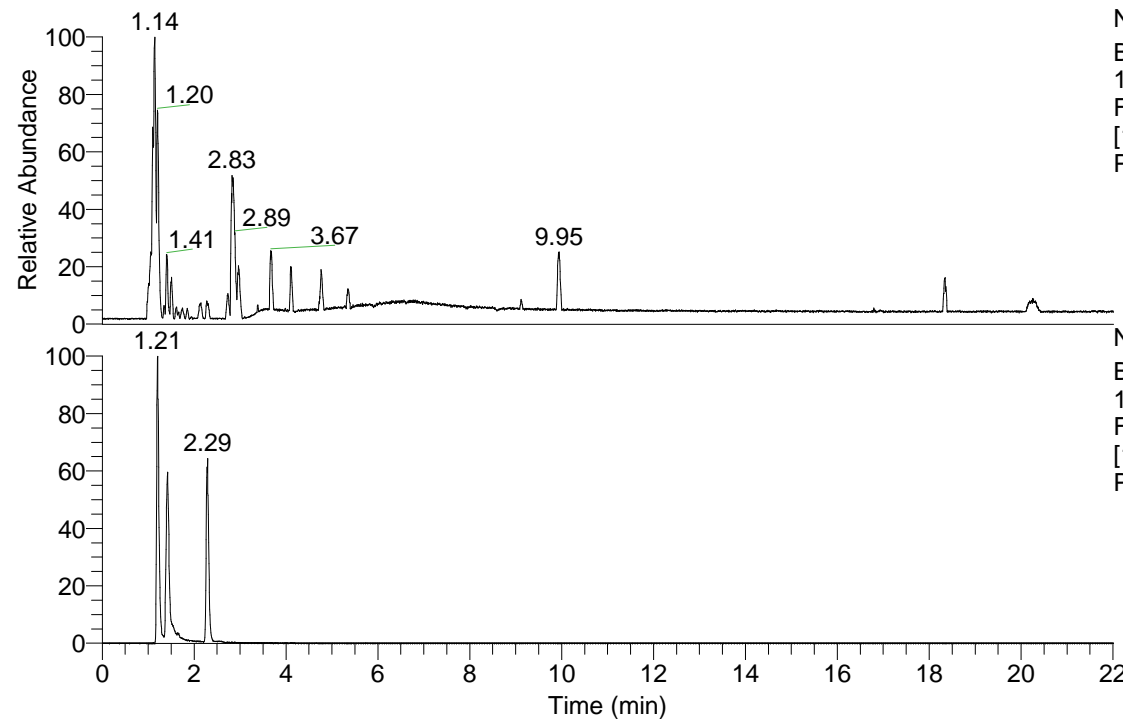


RT: 0.00 - 22.01



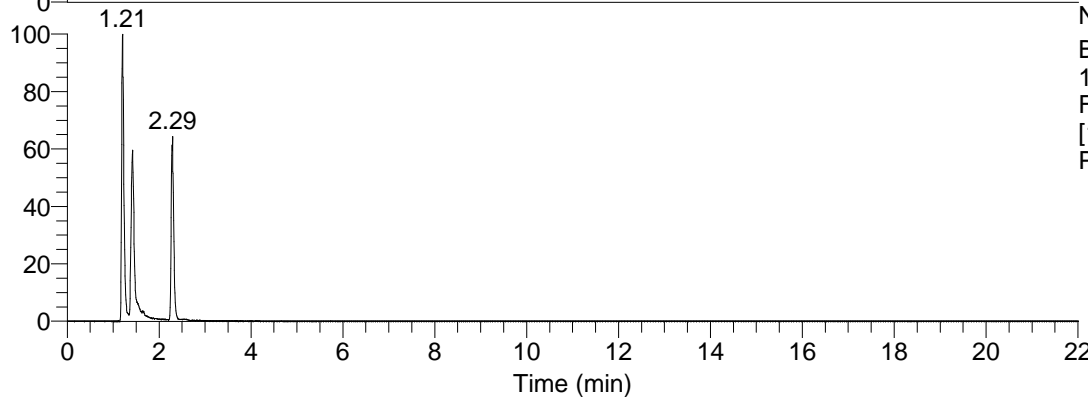
NL: 3.85E8  
 Base Peak m/z=  
 100.00000-1500.00000  
 F: FTMS + p ESI Full ms  
 [100.00-1500.00] MS  
 Pbistriata\_HDX

Pbistriata\_HDX#189 RT: 1.21

T: FTMS + p ESI Full ms [100.00-1500.00]

m/z= 140.00000-141.00000

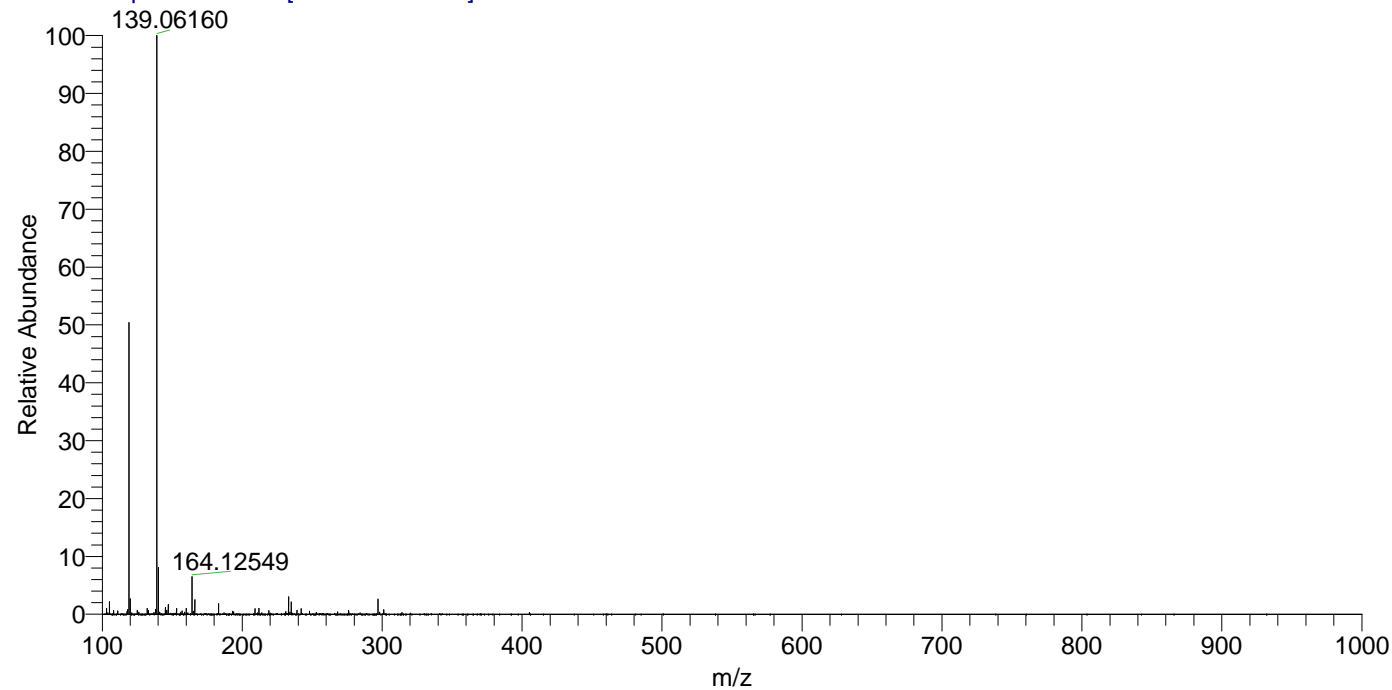
m/z	Intensity	Relative	Delta (ppm)	Composition
140.06496	20442208.0	100.00	2.42	C <sub>5</sub> H <sub>2</sub> <sup>2</sup> H <sub>3</sub> ON <sub>4</sub>



NL: 2.40E7  
 Base Peak m/z=  
 140.06447-140.06587 F:  
 FTMS + p ESI Full ms  
 [100.00-1500.00] MS  
 Pbistriata\_HDX

Pbistriata\_HDX #189 RT: 1.21 AV: 1 NL: 2.42E8

T: FTMS + p ESI Full ms [100.00-1500.00]



Pbistriata\_HDX #189 RT: 1.21 AV: 1 NL: 2.42E8

T: FTMS + p ESI Full ms [100.00-1500.00]

