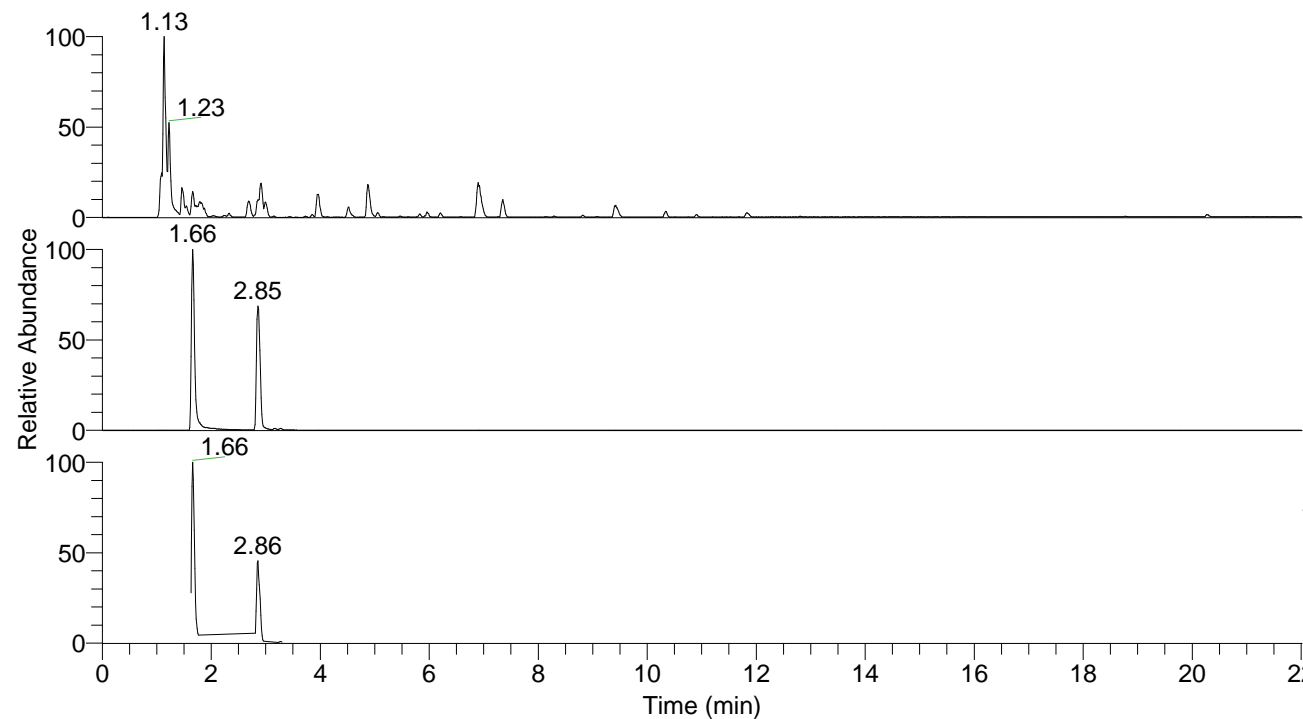


RT: 0.00 - 22.01



NL: 8.91E8  
 Base Peak m/z=  
 100.00000-1500.00000 F: FTMS + p  
 ESI Full ms [100.0000-1500.0000]  
 MS Pbistriata

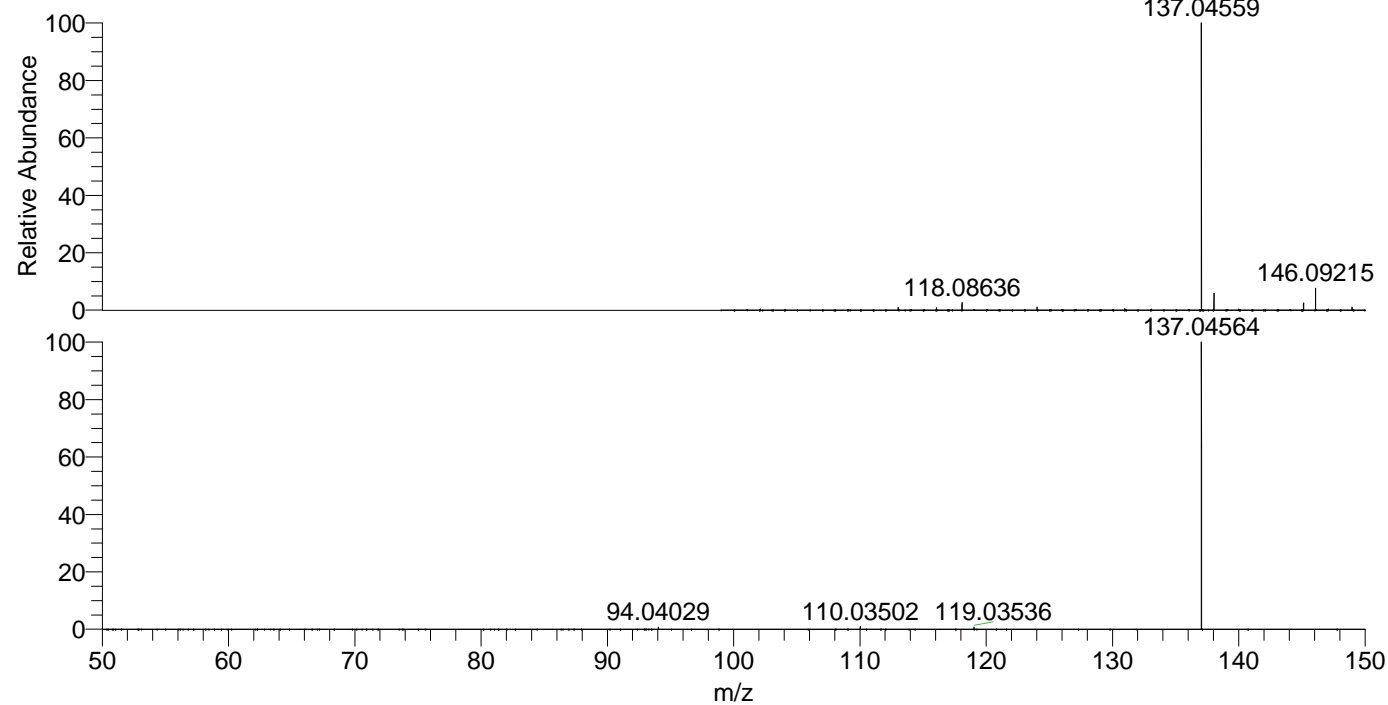
Pbistriata#707-772 RT: 1.63-1.77 AV: 12

F: FTMS + p ESI d Full ms2 137.0500@ ...

m/z	Intensity	Relative
94.04029	182841.3	0.71
110.03502	232432.3	0.90
119.03536	189162.9	0.73
137.04564	25756852.0	100.00

NL: 1.28E8  
 Base Peak m/z=  
 137.04496-137.04770 F: FTMS + p  
 ESI Full ms [100.0000-1500.0000]  
 MS Pbistriata

NL: 6.33E7  
 Base Peak m/z=  
 50.00000-1500.00000 F: FTMS + p  
 ESI d Full ms2 137.0455@hcd35.00  
 [50.0000-160.0000] MS Pbistriata



NL: 1.23E8  
 Pbistriata#721 RT: 1.66  
 AV: 1 T: FTMS + p ESI Full  
 ms [100.0000-1500.0000]

NL: 2.49E7  
 Pbistriata#644-799 RT:  
 1.63-1.77 AV: 12 F: FTMS  
 + p ESI d Full ms2  
 137.0455@hcd35.00  
 [50.0000-160.0000]