

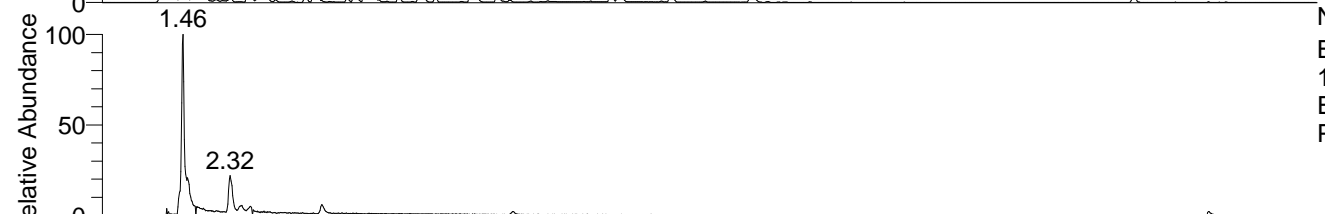
RT: 0.00 - 22.01



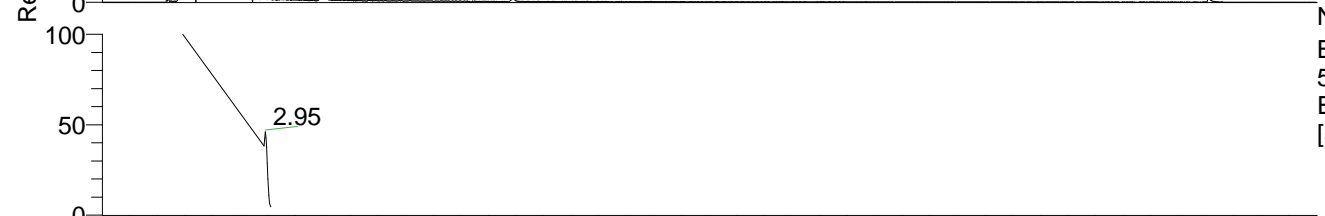
NL: 4.34E8  
 Base Peak m/z=  
 100.00000-1500.00000 F: FTMS +  
 p ESI Full ms [100.00-1500.00] MS  
 Pbistriata20

Pbistriata20#617 RT: 1.46  
 F: FTMS + p ESI d Full ms2 136.06@h ...  
 m/z= 50.00000-1000.00000

m/z	Intensity	Relative
91.05484	29663.1	0.74
119.03546	38726.5	0.96
136.02190	85058.4	2.11
136.06192	4027649.3	100.00
137.04590	44061.8	1.09



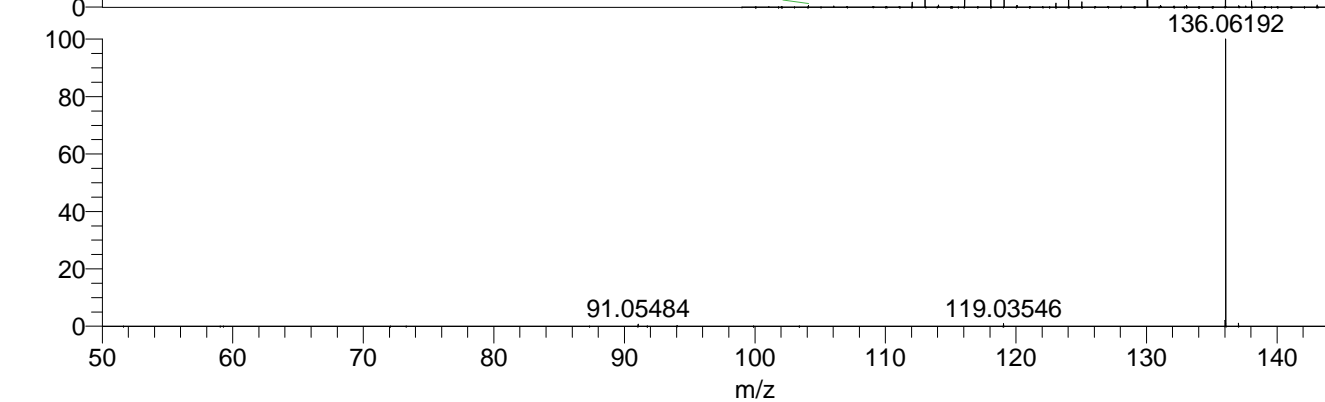
NL: 4.70E6  
 Base Peak m/z=  
 136.06164-136.06300 F: FTMS + p  
 ESI Full ms [100.00-1500.00] MS  
 Pbistriata20



NL: 4.03E6  
 Base Peak m/z=  
 50.00000-1500.00000 F: FTMS + p  
 ESI d Full ms2 136.06@hcd35.00  
 [50.00-155.00] MS Pbistriata20



NL: 4.92E7  
 Pbistriata20#619 RT:  
 1.46 AV: 1 T: FTMS + p  
 ESI Full ms  
 [100.00-1500.00]



NL: 4.03E6  
 Pbistriata20#607 RT:  
 1.46 AV: 1 F: FTMS + p  
 ESI d Full ms2  
 136.06@hcd35.00  
 [50.00-155.00]