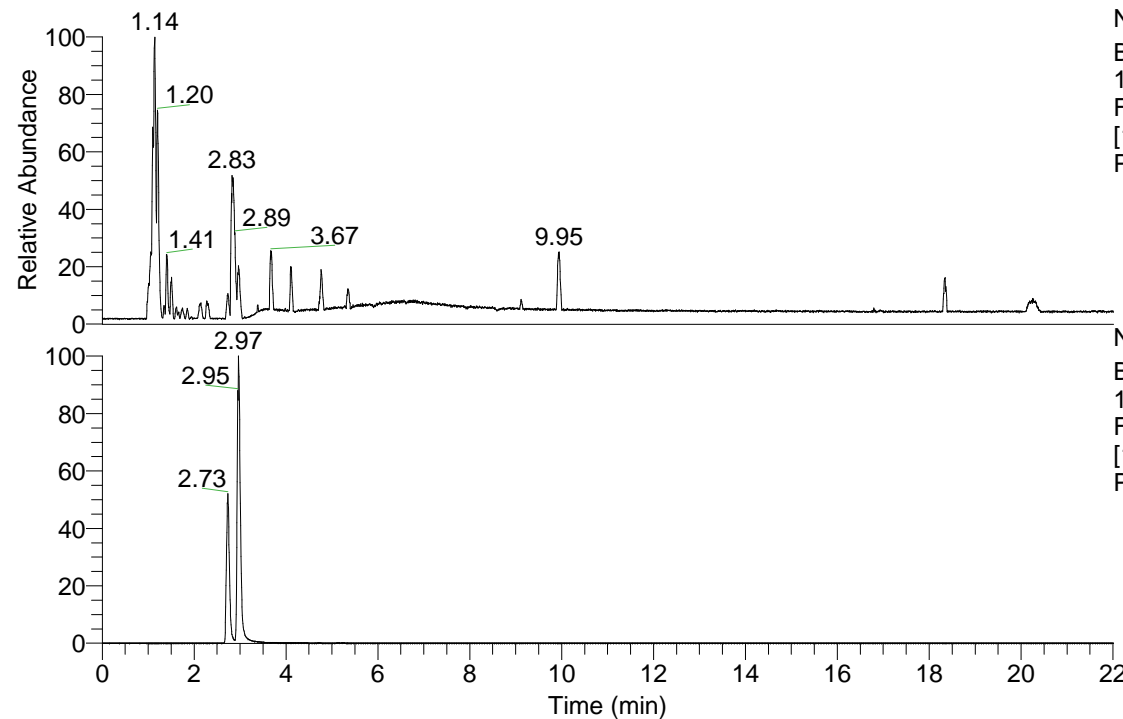


RT: 0.00 - 22.01



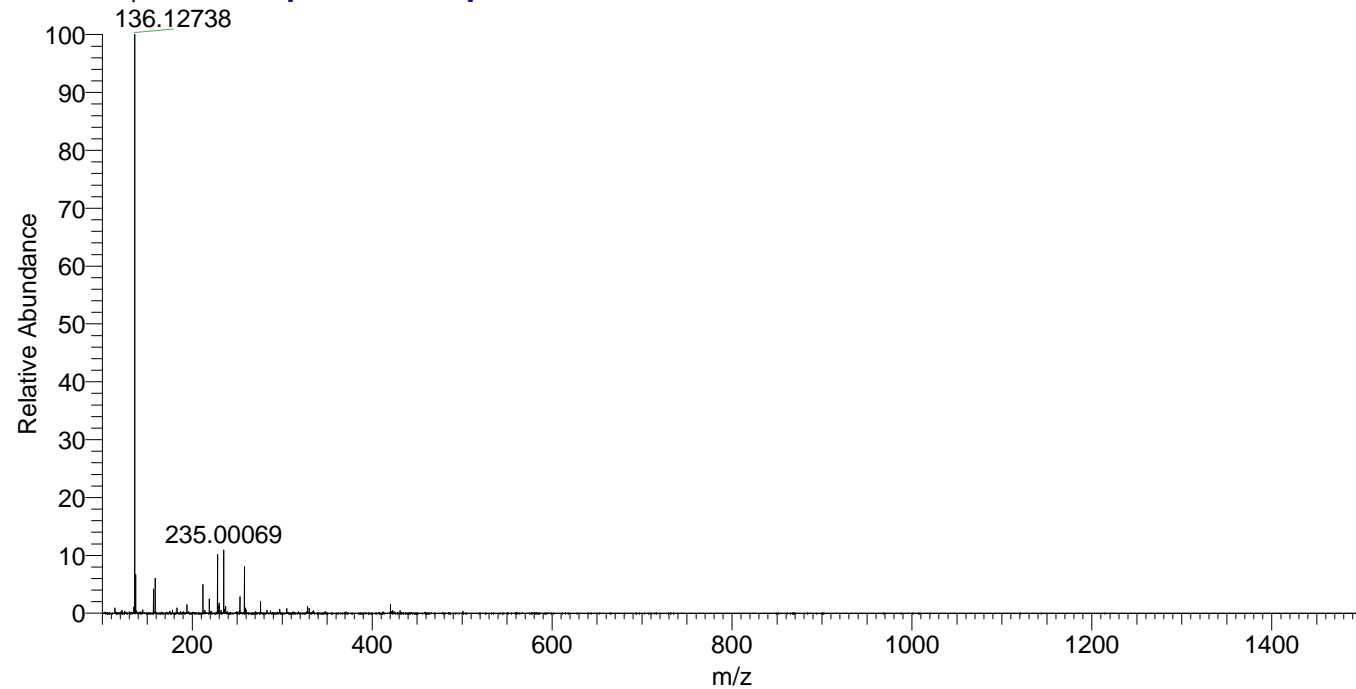
NL: 3.85E8
Base Peak m/z=
100.00000-1500.00000
F: FTMS + p ESI Full ms
[100.00-1500.00] MS
Pbistriata_HDX

Pbistriata_HDX#482 RT: 2.97
T: FTMS + p ESI Full ms [100.00-1500.00]
m/z= 136.00000-137.00000

m/z	Intensity	Relative	Delta (ppm)	Composition
136.12738	74149712.0	100.00	2.70	C ₆ H ₁₀ ² H ₄ O ₂ N
			-8.67	C ₆ H ₁₂ ² H ₃ O ₂ N

NL: 7.81E7
Base Peak m/z=
136.12688-136.12824 F:
FTMS + p ESI Full ms
[100.00-1500.00] MS
Pbistriata_HDX

Pbistriata_HDX #482 RT: 2.97 AV: 1 NL: 7.31E7
T: FTMS + p ESI Full ms [100.00-1500.00]



Pbistriata_HDX #482 RT: 2.97 AV: 1 NL: 7.31E7
T: FTMS + p ESI Full ms [100.00-1500.00]

