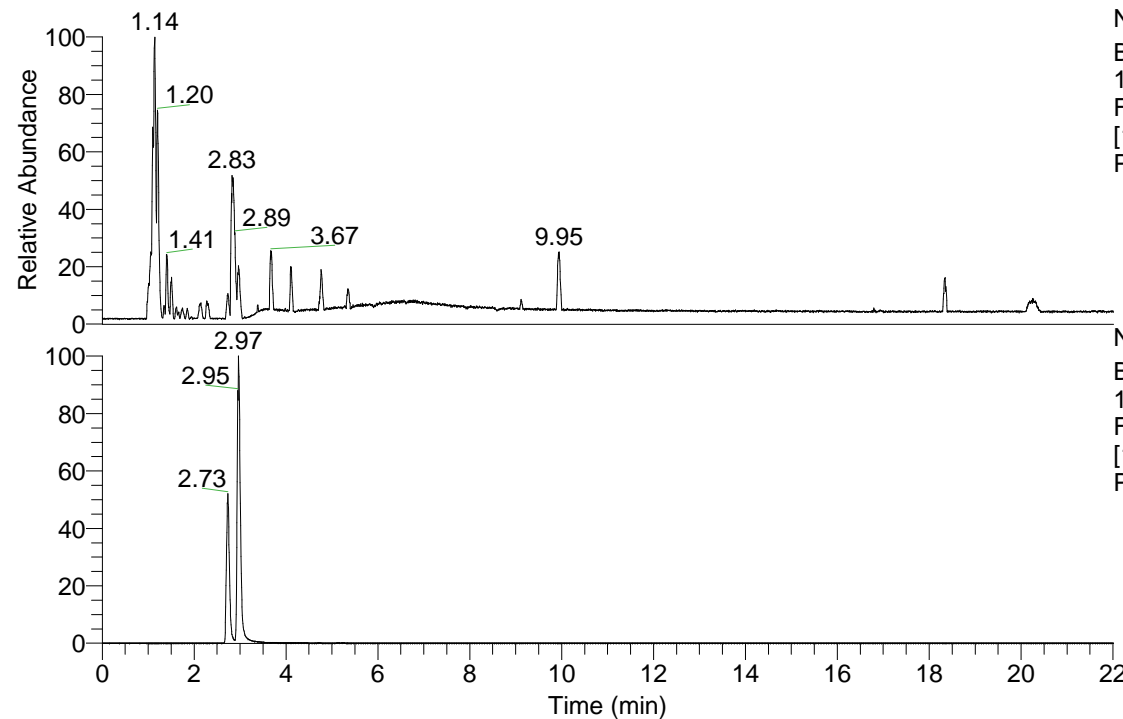


RT: 0.00 - 22.01



NL: 3.85E8
Base Peak m/z=
100.00000-1500.00000
F: FTMS + p ESI Full ms
[100.00-1500.00] MS
Pbistriata_HDX

Pbistriata_HDX#439 RT: 2.73

T: FTMS + p ESI Full ms [100.00-1500.00]

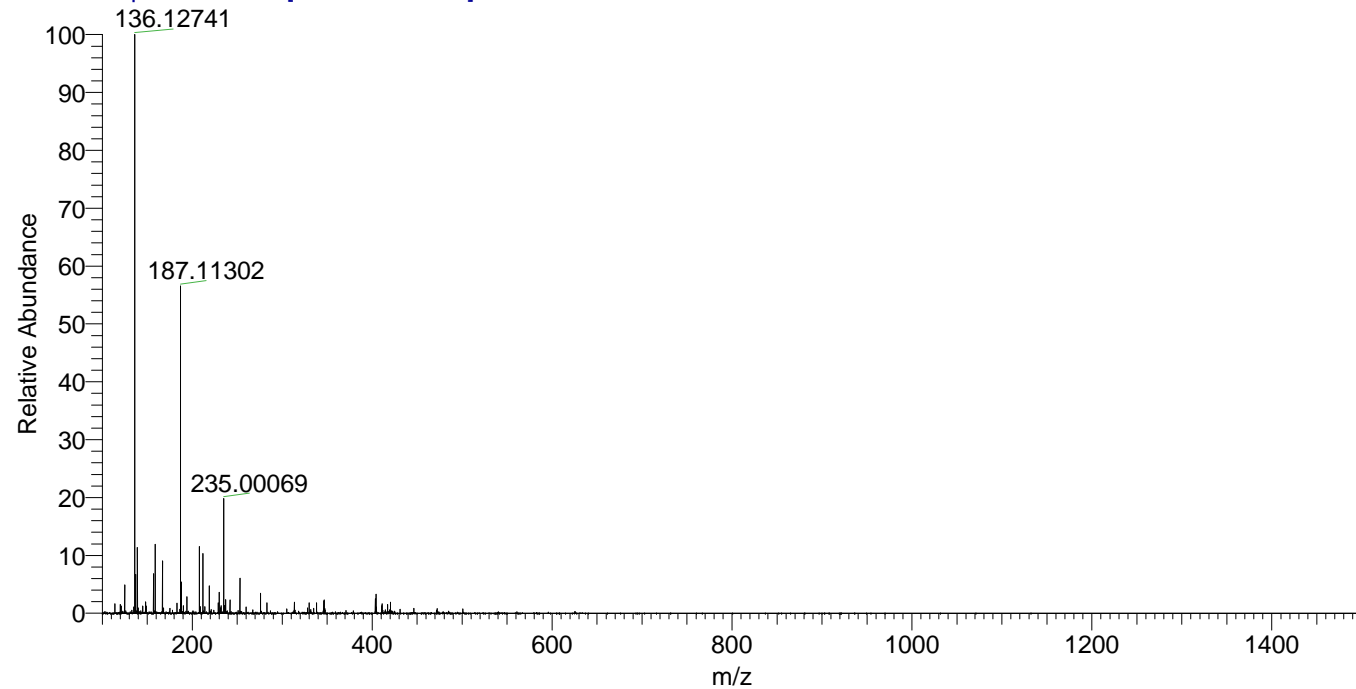
m/z= 136.00000-137.00000

m/z	Intensity	Relative	Delta (ppm)	Composition
136.12741	37999096.0	100.00	2.93	C ₆ H ₁₀ ² H ₄ O ₂ N
			-8.45	C ₆ H ₁₂ ² H ₃ O ₂ N

NL: 7.81E7
Base Peak m/z=
136.12688-136.12824 F:
FTMS + p ESI Full ms
[100.00-1500.00] MS
Pbistriata_HDX

Pbistriata_HDX #439 RT: 2.73 AV: 1 NL: 3.68E7

T: FTMS + p ESI Full ms [100.00-1500.00]



Pbistriata_HDX #439 RT: 2.73 AV: 1 NL: 3.68E7

T: FTMS + p ESI Full ms [100.00-1500.00]

