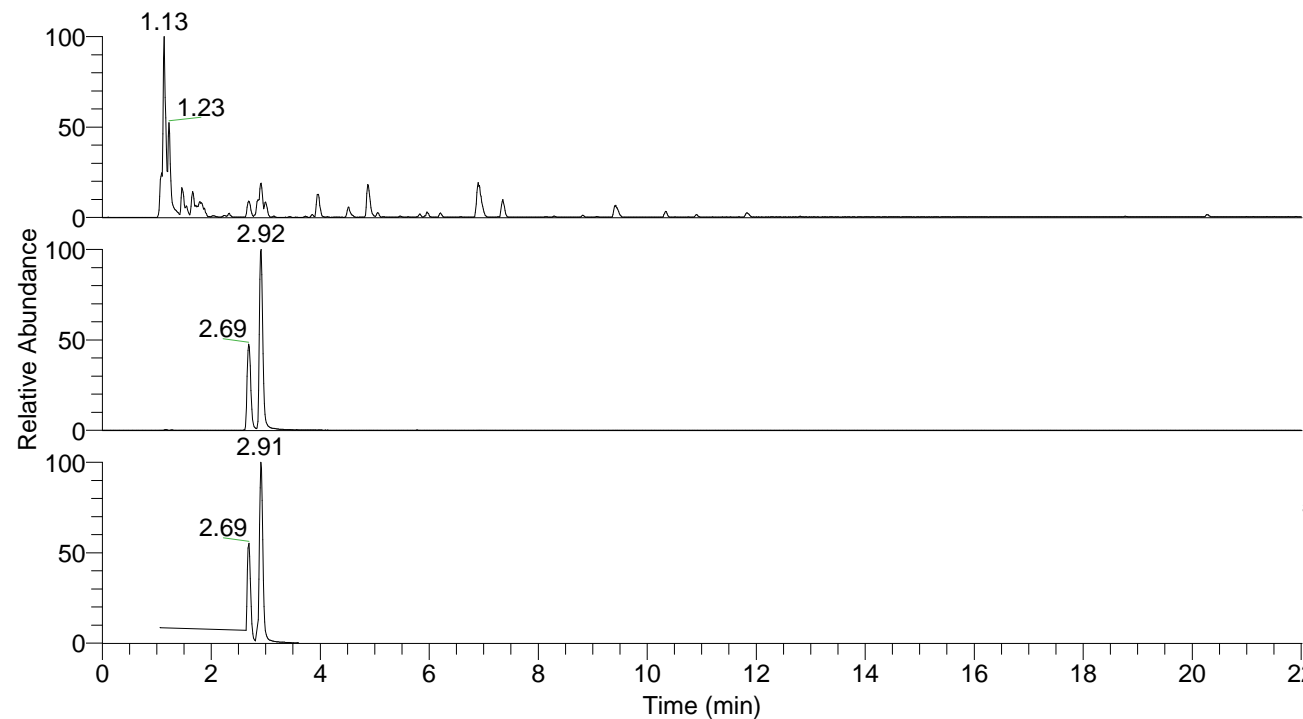


RT: 0.00 - 22.01



NL: 8.91E8
 Base Peak m/z=
 100.00000-1500.00000 F: FTMS + p
 ESI Full ms [100.0000-1500.0000]
 MS Pbistriata

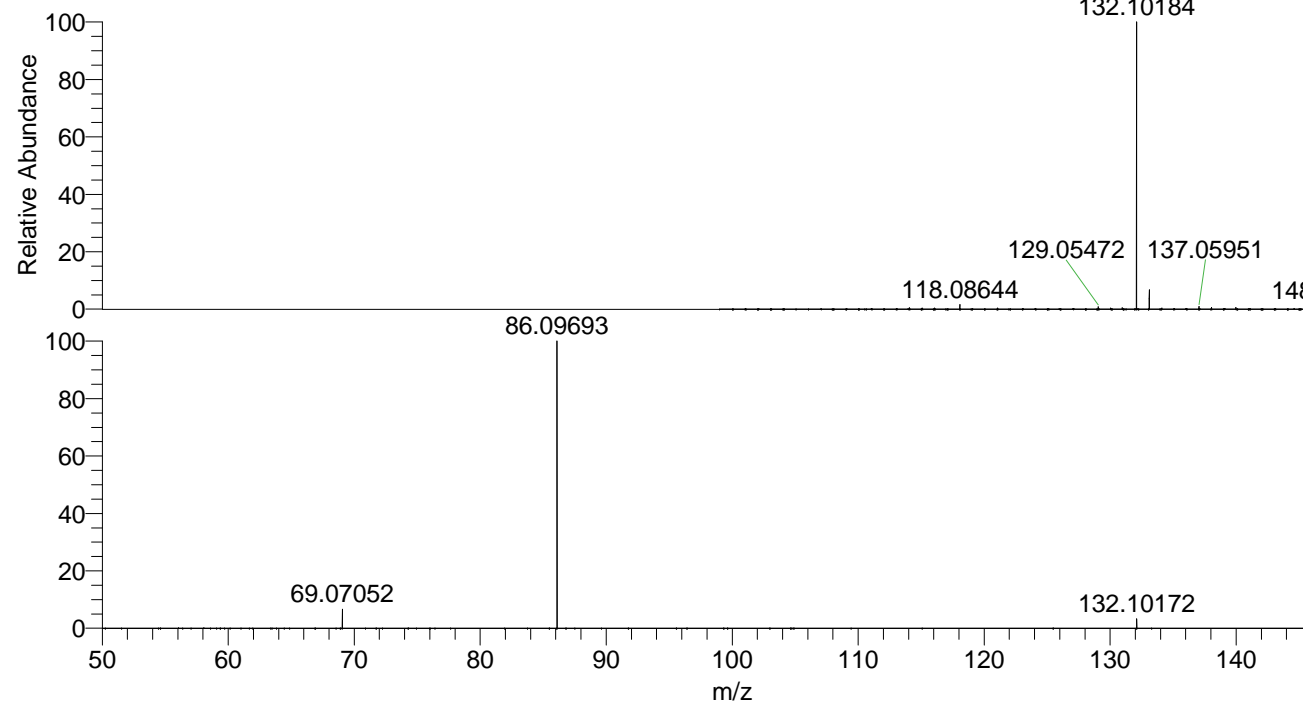
NL: 1.69E8
 Base Peak m/z=
 132.10113-132.10377 F: FTMS + p
 ESI Full ms [100.0000-1500.0000]
 MS Pbistriata

NL: 1.12E8
 Base Peak m/z=
 50.00000-1500.00000 F: FTMS + p
 ESI d Full ms2 132.1018@hcd35.00
 [50.0000-155.0000] MS Pbistriata

Pbistriata#1138-1184 RT: 2.64-2.75 AV: 9

F: FTMS + p ESI d Full ms2 132.1000@ ...

m/z	Intensity	Relative
69.07052	2263123.3	6.55
86.09693	34561584.0	100.00
132.10172	1136938.4	3.29



NL: 7.95E7
 Pbistriata#1159 RT: 2.69
 AV: 1 T: FTMS + p ESI Full
 ms [100.0000-1500.0000]

NL: 3.44E7
 Pbistriata#1135-1189 RT:
 2.64-2.75 AV: 9 F: FTMS +
 p ESI d Full ms2
 132.1018@hcd35.00
 [50.0000-155.0000]