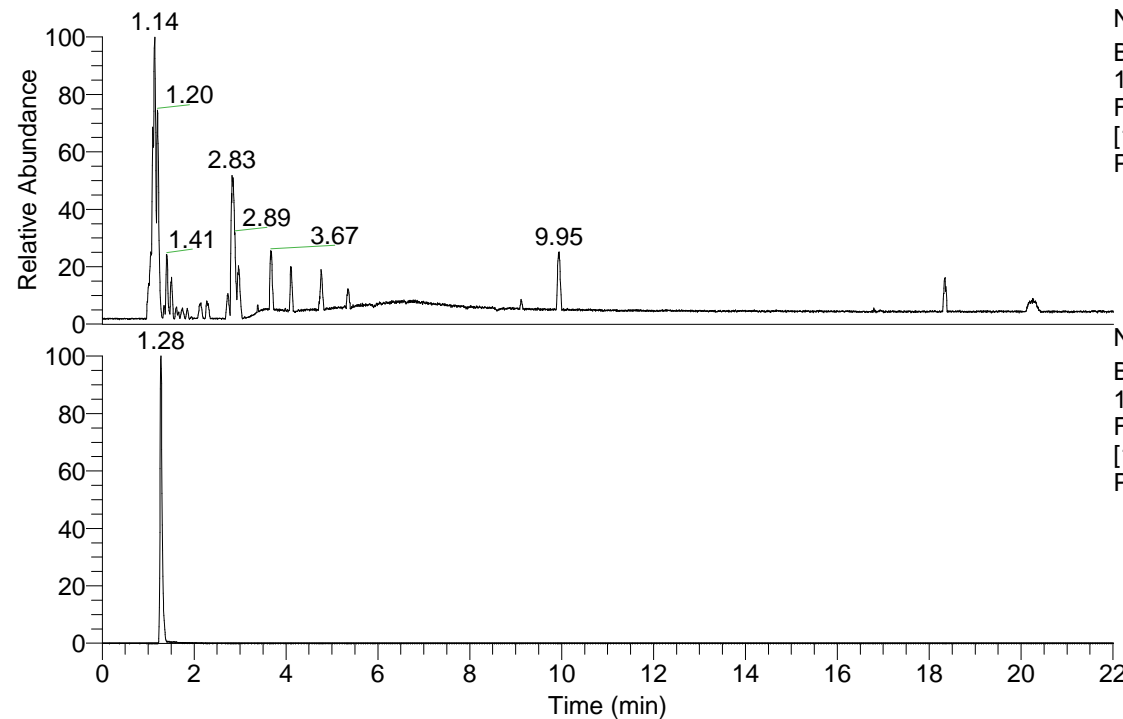


RT: 0.00 - 22.01



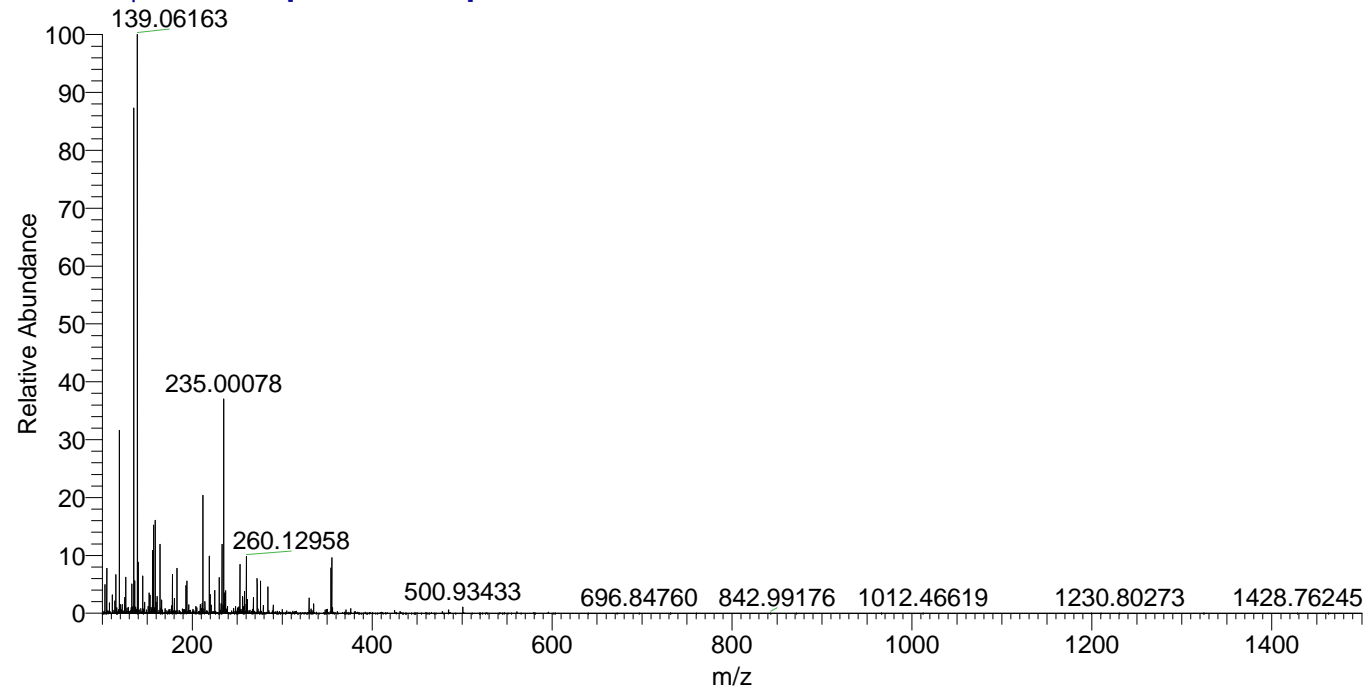
NL: 3.85E8
Base Peak m/z=
100.00000-1500.00000
F: FTMS + p ESI Full ms
[100.00-1500.00] MS
Pbistriata_HDX

Pbistriata_HDX#201 RT: 1.28
T: FTMS + p ESI Full ms [100.00-1500.00]
m/z= 135.00000-136.00000

| m/z | Intensity | Relative | Delta (ppm) | Composition |
|-----------|------------|----------|-------------|--|
| 135.14348 | 16998584.0 | 100.00 | 3.56 | C ₆ H ₁₁ ² H ₄ ON ₂ |
| | | | -7.89 | C ₆ H ₁₃ ² H ₃ ON ₂ |

NL: 1.70E7
Base Peak m/z=
135.14287-135.14423 F:
FTMS + p ESI Full ms
[100.00-1500.00] MS
Pbistriata_HDX

Pbistriata_HDX #201 RT: 1.28 AV: 1 NL: 1.95E7
T: FTMS + p ESI Full ms [100.00-1500.00]



Pbistriata_HDX #201 RT: 1.28 AV: 1 NL: 1.95E7
T: FTMS + p ESI Full ms [100.00-1500.00]

