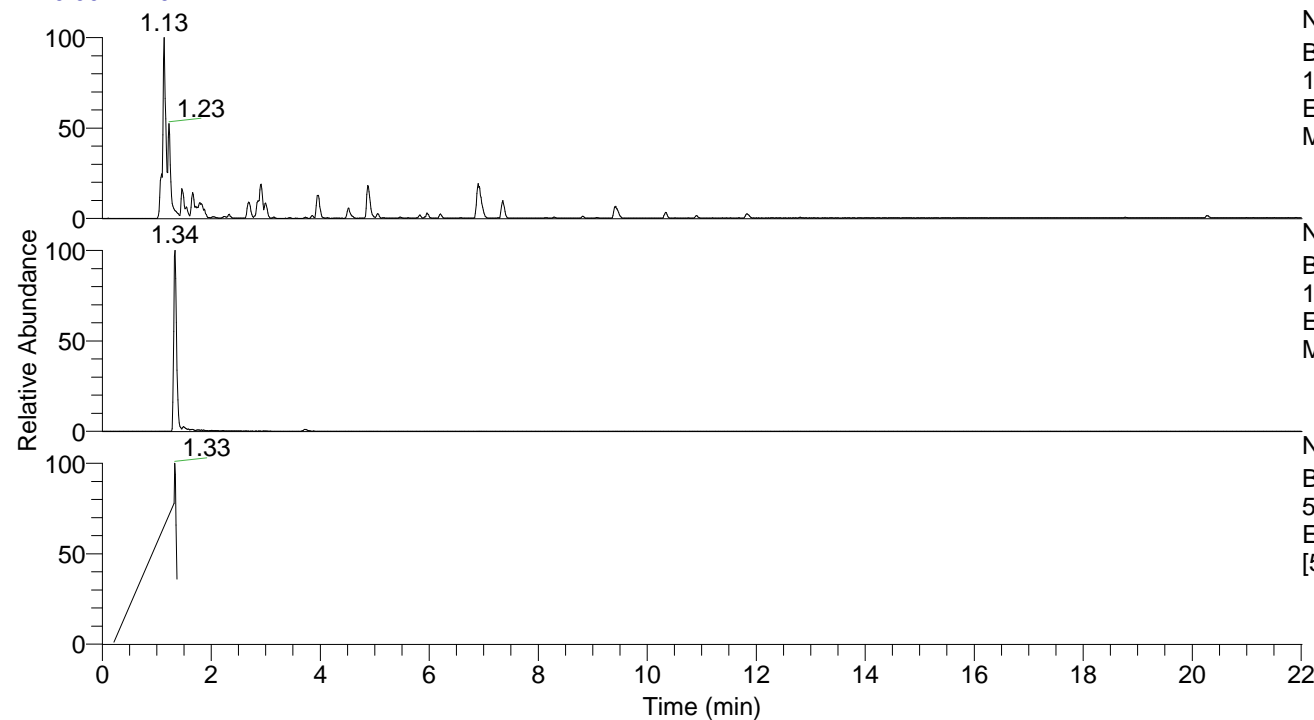


RT: 0.00 - 22.01



NL: 8.91E8

Base Peak m/z=  
100.00000-1500.00000 F: FTMS + p  
ESI Full ms [100.0000-1500.0000]  
MS Pbistriata

NL: 8.77E6

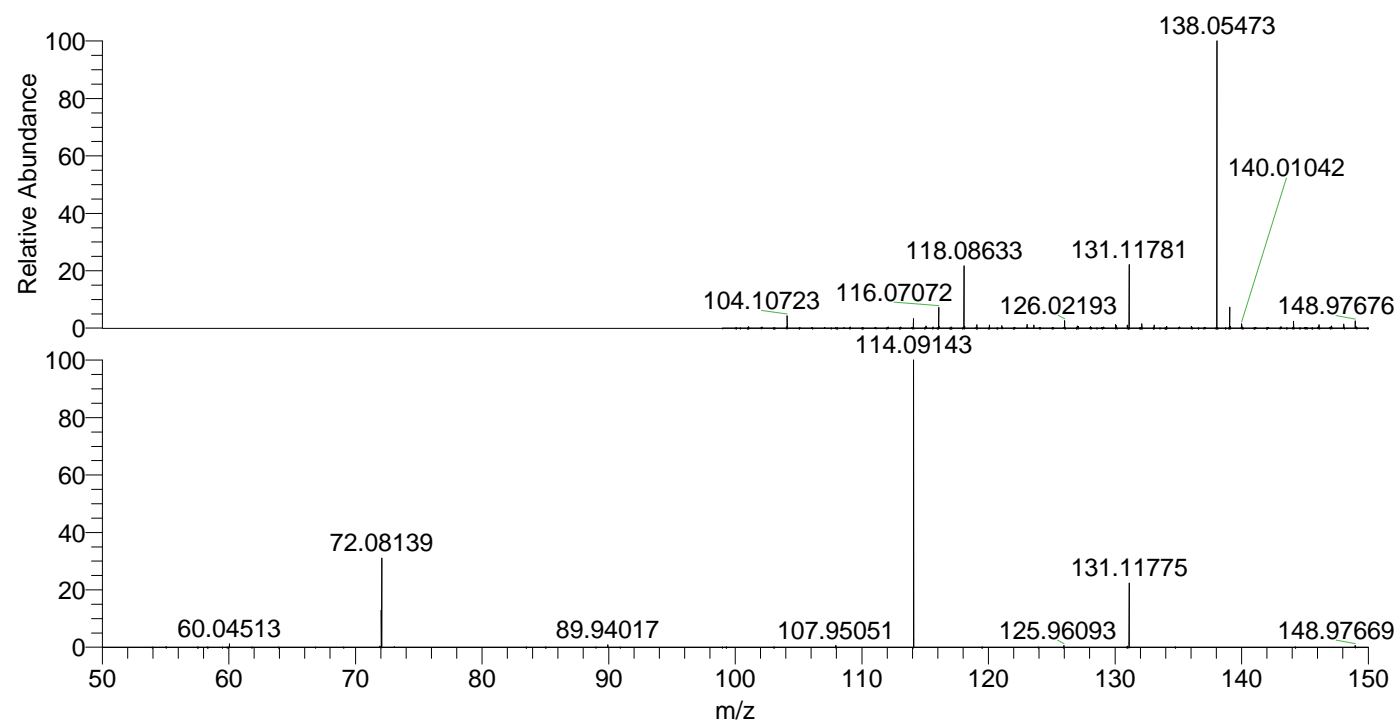
Base Peak m/z=  
131.11713-131.11975 F: FTMS + p  
ESI Full ms [100.0000-1500.0000]  
MS Pbistriata

NL: 4.61E6

Base Peak m/z=  
50.00000-1500.00000 F: FTMS + p  
ESI d Full ms2 130.9663@hcd35.00  
[50.0000-150.0000] MS Pbistriata

Pbistriata#557-575 RT: 1.32-1.36 AV: 4  
F: FTMS + p ESI d Full ms2 130.9700 ...  
m/z= 50.00000-1000.00000

m/z	Intensity	Relative
60.04513	42943.9	1.18
72.04503	467243.3	12.82
72.08138	1157346.5	31.77
89.94018	28339.8	0.78
107.95055	21661.8	0.59
114.09143	3643247.5	100.00
125.96093	25619.9	0.70
131.11774	806760.4	22.14
148.97667	25053.3	0.69



NL: 3.79E7

Pbistriata#565 RT: 1.34  
AV: 1 T: FTMS + p ESI Full  
ms [100.0000-1500.0000]

NL: 3.73E6

Pbistriata#558-581 RT:  
1.33-1.36 AV: 3 F: FTMS +  
p ESI d Full ms2  
130.9663@hcd35.00  
[50.0000-150.0000]