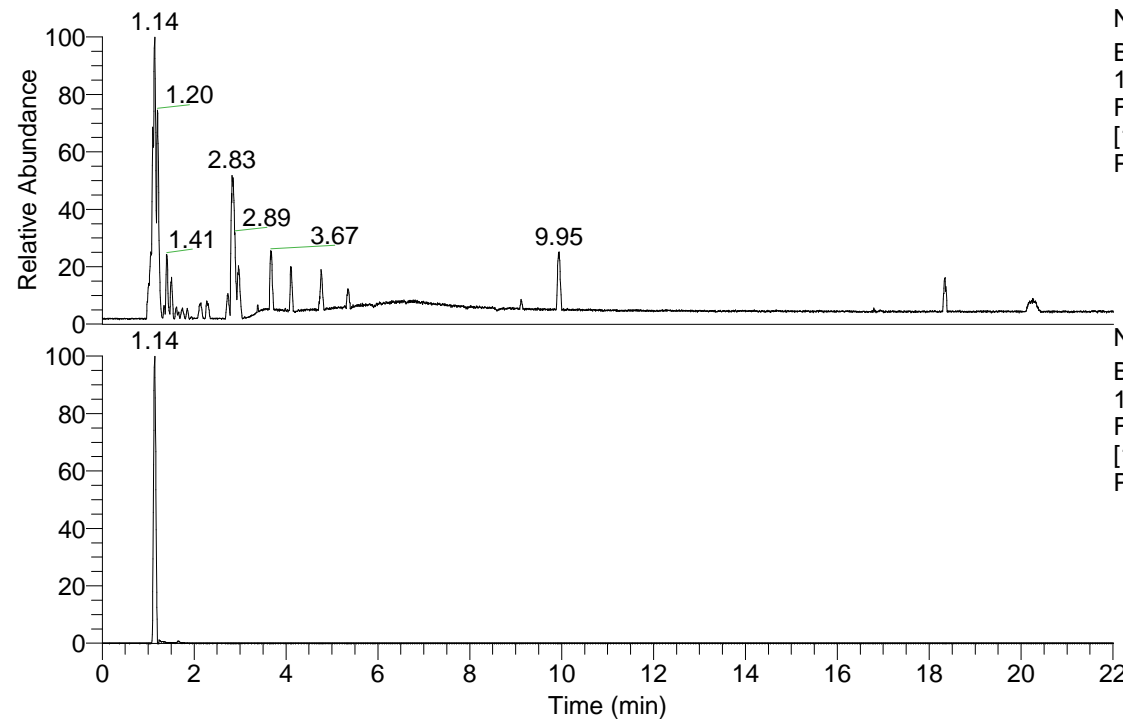


RT: 0.00 - 22.01



NL: 3.85E8
Base Peak m/z=
100.00000-1500.00000
F: FTMS + p ESI Full ms
[100.00-1500.00] MS
Pbistriata_HDX

Pbistriata_HDX#175 RT: 1.14

T: FTMS + p ESI Full ms [100.00-1500.00]

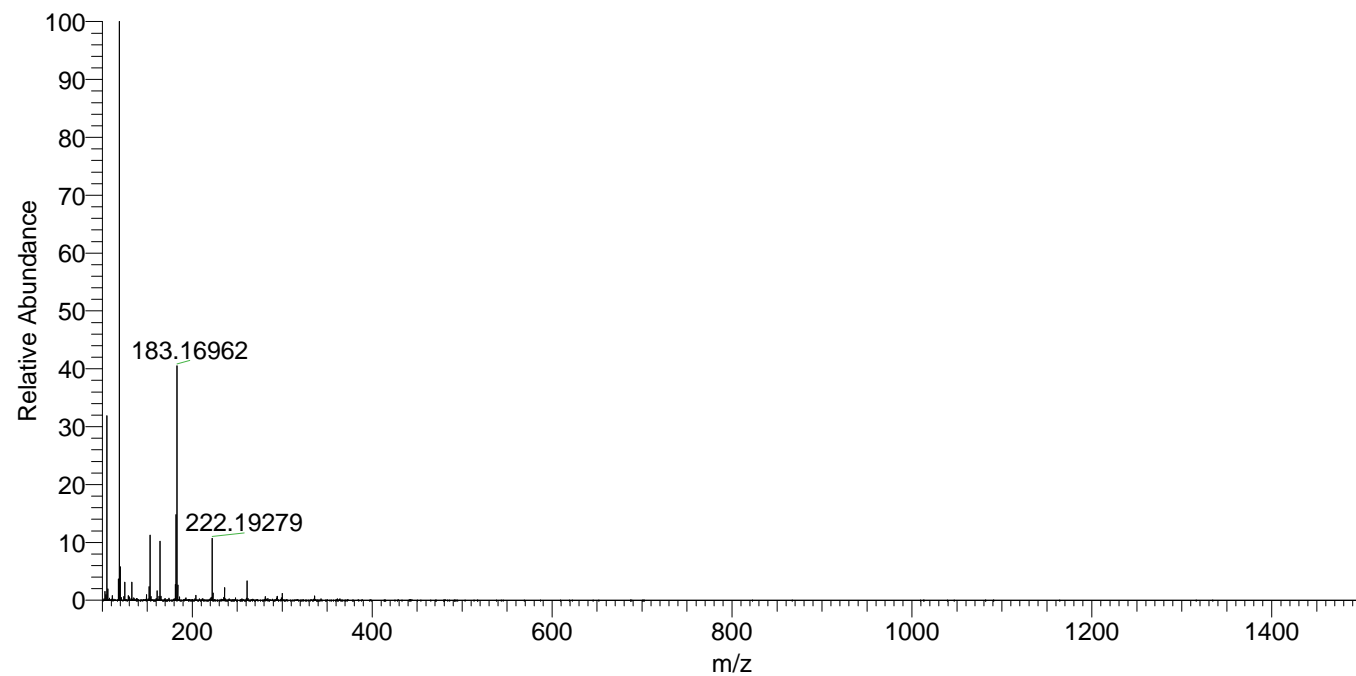
m/z= 119.00000-120.00000

m/z	Intensity	Relative	Delta (ppm)	Composition
119.09308	376547936.0	100.00	4.59	C ₅ H ₁₁ ² H O ₂ N
			-8.41	C ₅ H ₁₃ O ₂ N

NL: 3.85E8
Base Peak m/z=
119.09248-119.09368 F:
FTMS + p ESI Full ms
[100.00-1500.00] MS
Pbistriata_HDX

Pbistriata_HDX #175 RT: 1.14 AV: 1 NL: 3.59E8

T: FTMS + p ESI Full ms [100.00-1500.00]



Pbistriata_HDX #175 RT: 1.14 AV: 1 NL: 3.59E8

T: FTMS + p ESI Full ms [100.00-1500.00]

