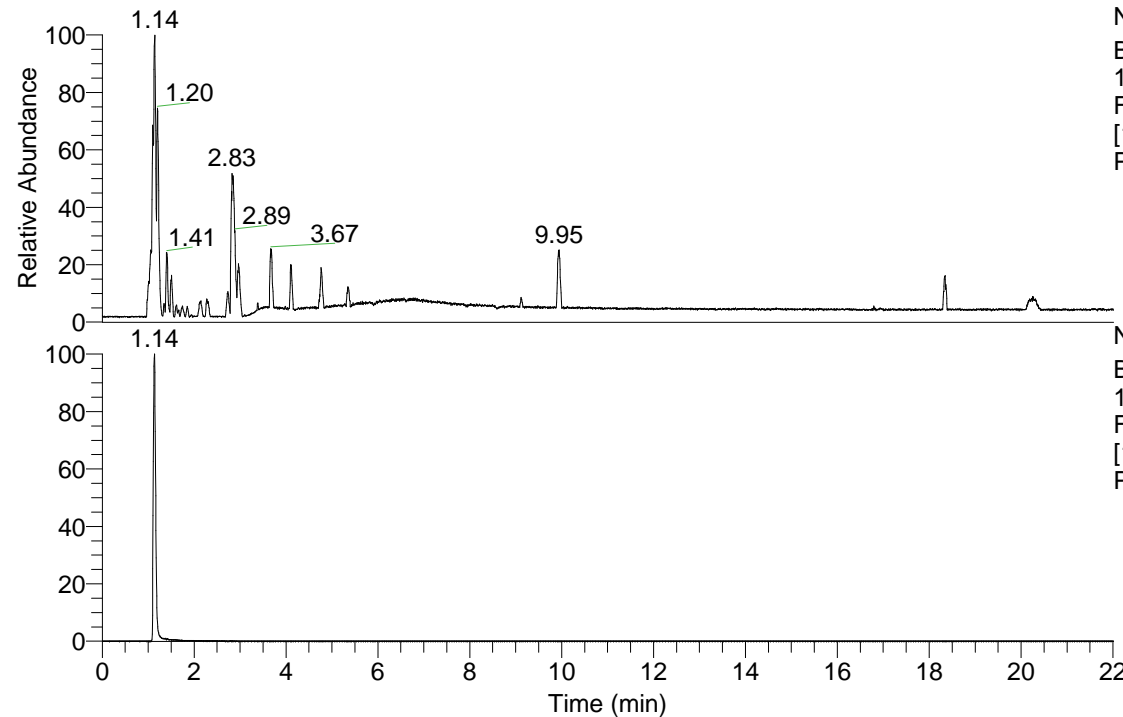


RT: 0.00 - 22.01



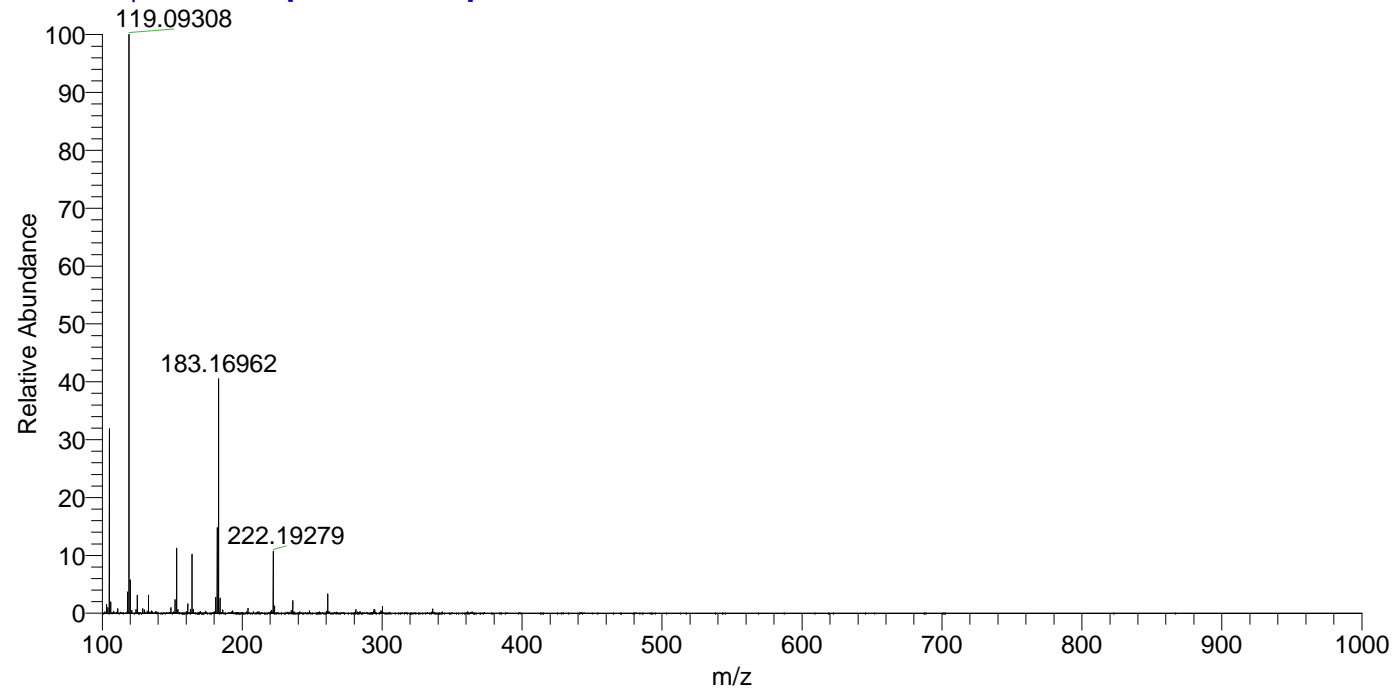
NL: 3.85E8
 Base Peak m/z=
 100.00000-1500.00000
 F: FTMS + p ESI Full ms
 [100.00-1500.00] MS
 Pbistriata_HDX

Pbistriata_HDX#175 RT: 1.14
 T: FTMS + p ESI Full ms [100.00-1500.00]
 m/z= 105.00000-106.00000

m/z	Intensity	Relative	Delta (ppm)	Composition
105.11395	119973232.0	100.00	6.52	C ₅ H ₁₃ ² H O N
			-8.21	C ₅ H ₁₅ O N

NL: 1.20E8
 Base Peak m/z=
 105.11329-105.11435 F:
 FTMS + p ESI Full ms
 [100.00-1500.00] MS
 Pbistriata_HDX

Pbistriata_HDX #175 RT: 1.14 AV: 1 NL: 3.59E8
 T: FTMS + p ESI Full ms [100.00-1500.00]



Pbistriata_HDX #175 RT: 1.14 AV: 1 NL: 1.14E8
 T: FTMS + p ESI Full ms [100.00-1500.00]

