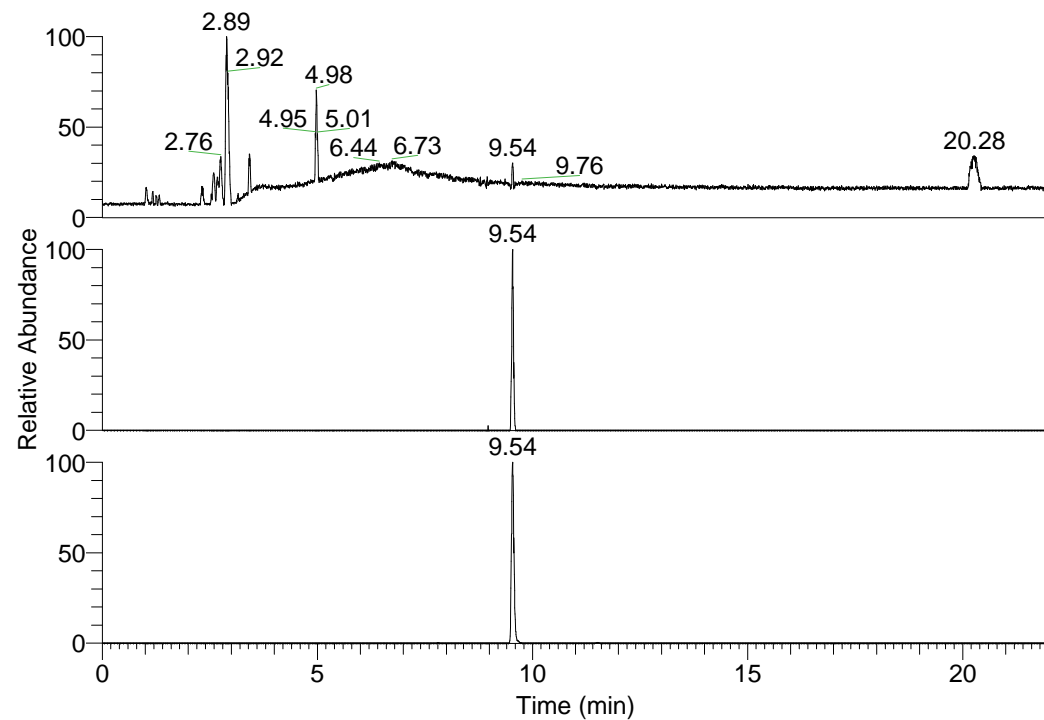


RT: 0.00 - 22.01



NL: 1.01E8  
Base Peak m/z=  
100.00000-1500.00000 F:  
FTMS + p ESI Full ms  
[100.00-1500.00] MS  
Nclavipes\_HDX

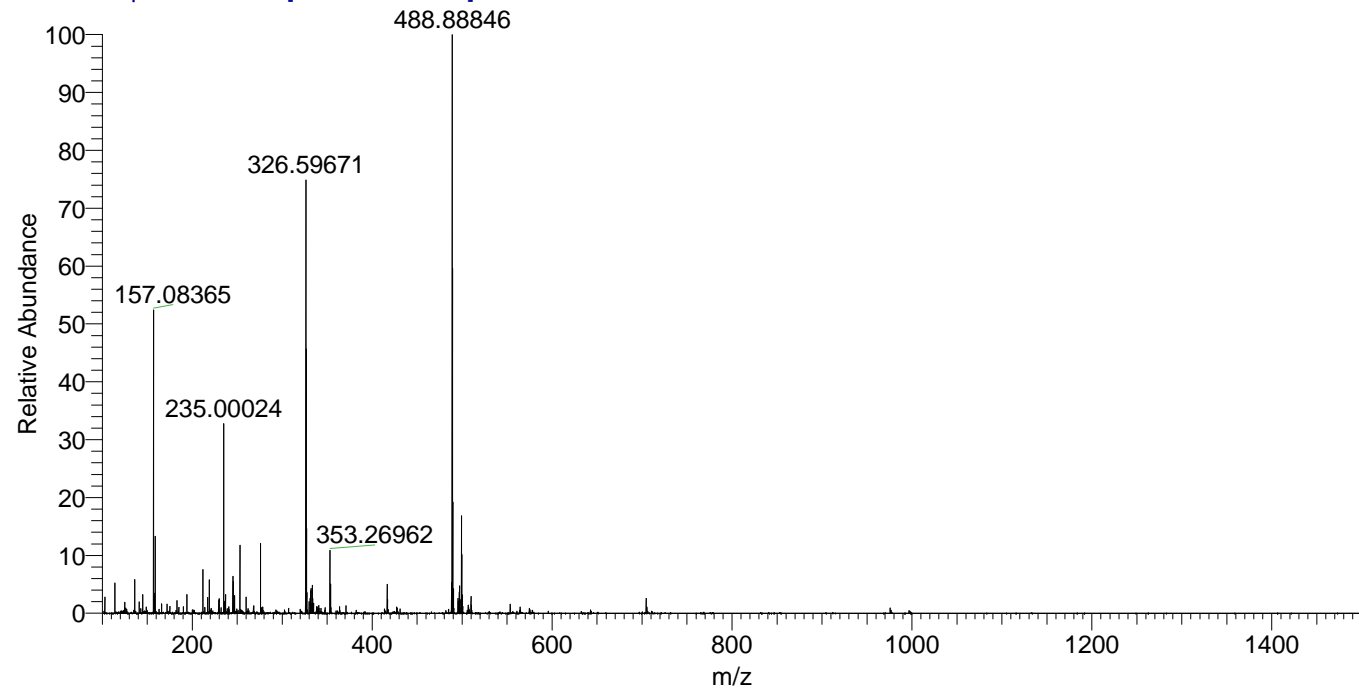
NL: 2.75E5  
Base Peak m/z=  
975.75841-975.76817 F:  
FTMS + p ESI Full ms  
[100.00-1500.00] MS  
Nclavipes\_HDX

NL: 3.04E7  
Base Peak m/z=  
488.88626-488.89114 F:  
FTMS + p ESI Full ms  
[100.00-1500.00] MS  
Nclavipes\_HDX

Nclavipes\_HDX#1532 RT: 9.54  
T: FTMS + p ESI Full ms [100.00-1500.00]  
m/z= 975.00000-976.00000

m/z	Intensity	Relative	Delta (ppm)	Composition
975.76233	275297.5	100.00	-0.42	C <sub>47</sub> H <sub>67</sub> <sup>2</sup> H <sub>17</sub> O <sub>8</sub> N <sub>13</sub>
			1.17	C <sub>47</sub> H <sub>65</sub> <sup>2</sup> H <sub>18</sub> O <sub>8</sub> N <sub>13</sub>
			-2.01	C <sub>47</sub> H <sub>69</sub> <sup>2</sup> H <sub>16</sub> O <sub>8</sub> N <sub>13</sub>
			2.75	C <sub>47</sub> H <sub>63</sub> <sup>2</sup> H <sub>19</sub> O <sub>8</sub> N <sub>13</sub>
			-3.59	C <sub>47</sub> H <sub>71</sub> <sup>2</sup> H <sub>15</sub> O <sub>8</sub> N <sub>13</sub>
			4.34	C <sub>47</sub> H <sub>61</sub> <sup>2</sup> H <sub>20</sub> O <sub>8</sub> N <sub>13</sub>

Nclavipes\_HDX #1532 RT: 9.54 AV: 1 NL: 3.00E7  
T: FTMS + p ESI Full ms [100.00-1500.00]



Nclavipes\_HDX #1532 RT: 9.54 AV: 1 NL: 2.66E5  
T: FTMS + p ESI Full ms [100.00-1500.00]

